



National Institute  
on Alcohol Abuse  
and Alcoholism

National Institute on Alcohol Abuse and Alcoholism  
Division of Epidemiology and Prevention Research  
Alcohol Epidemiologic Data System

## **SURVEILLANCE REPORT #110**

# **APPARENT PER CAPITA ALCOHOL CONSUMPTION: NATIONAL, STATE, AND REGIONAL TRENDS, 1977–2016**

Sarah P. Haughwout, M.P.H.  
Megan E. Slater, Ph.D.

CSR, Incorporated<sup>1</sup>  
Suite 500  
4250 N. Fairfax Drive  
Arlington, VA 22203

**April 2018**

U.S. Department of Health and Human Services  
Public Health Service  
National Institutes of Health

<sup>1</sup> CSR, Incorporated, operates the Alcohol Epidemiologic Data System (AEDS) under Contract No. HHSN275201300016C for the National Institute on Alcohol Abuse and Alcoholism (NIAAA). Dr. Rosalind A. Breslow (Division of Epidemiology and Prevention Research) serves as the NIAAA Contracting Officer's Representative on the contract.

(Blank page)

## HIGHLIGHTS

This surveillance report on 1977–2016 apparent per capita alcohol consumption in the United States is the 32nd in a series of consumption reports produced annually by the National Institute on Alcohol Abuse and Alcoholism (NIAAA). Findings are based on alcoholic beverage sales data collected by the Alcohol Epidemiologic Data System (AEDS) from the States or from the National Alcohol Beverage Control Association, as well as from various reports produced by beverage industry sources. Population data from the U.S. Census Bureau are used as denominators to calculate per capita rates. The following are highlights from the current report, which updates consumption trends through 2016:

- Per capita consumption of ethanol from all alcoholic beverages combined in 2016 was 2.35 gallons, representing a 0.9 percent increase from 2.33 gallons in 2015.
- Between 2015 and 2016, changes in overall per capita consumption of ethanol included increases in 33 States, decreases in 12 States, and no changes in 5 States and the District of Columbia.
- Analysis of overall per capita alcohol consumption by U.S. Census region between 2015 and 2016 indicated an increase of 1.3 percent in the Northeast, 0.4 percent in the Midwest, 1.3 percent in the South, and 1.7 percent in the West.
- *Healthy People 2020* set the national objective for per capita annual alcohol consumption at no more than 2.1 gallons. Per capita consumption would need to decrease by 2.8 percent each year for the next 4 years to achieve this goal. In 2016, the overall per capita annual alcohol consumption level was more than 10 percent above target (>2.31 gallons) in 29 States and the District of Columbia, 10 percent or less above target (>2.10–2.31 gallons) in 12 States, 10 percent below target (1.89–2.10 gallons) in 5 States, and more than 10 percent below target (<1.89 gallons) in 4 States.

---

## INTRODUCTION

This surveillance report on apparent per capita alcohol consumption in the United States is the 32nd in a series of reports that examine alcohol consumption trends on a national, State, and regional basis. Like previous reports on per capita alcohol consumption, it is intended to provide updated alcohol information for policymakers, health care providers, researchers, and others concerned about alcohol issues.

Data presented in this report are related to one of the national objectives set in *Healthy People 2020* for alcohol consumption. *Healthy People*, a program initiated by the U.S. Department of Health and Human Services, establishes benchmarks to promote longer and higher-quality lives for Americans. The program's objective for alcohol consumption is to reduce the national per capita annual alcohol consumption level by 10 percent from the 2007

baseline value of 2.3 gallons per year to no more than 2.1 gallons per year by 2020 (U.S. Department of Health and Human Services 2012). According to NIAAA (2010), a “standard drink” in the United States contains 0.6 fluid ounces of ethanol. Thus, the target per capita consumption level of 2.1 gallons of ethanol equates to approximately an average of 448 standard drinks consumed by a person age 14 or older in a year.

The current report updates the 1977–2015 alcohol consumption trends (Haughwout and Slater 2017) with new data for 2016. Data are presented in four tables. Table 1 presents national data on trends in beer, wine, and spirits consumption as well as on all alcoholic beverages combined. Table 2 presents data on alcohol consumption for individual States for 2016. States also are ranked in deciles according to annual per capita ethanol consumption. Table 3 presents the alcoholic

beverage sales and shipment data sources for the volume data presented in Table 2. Table 4 presents data on consumption trends for each type of beverage and all beverages combined for the States as well as for the four regions defined by the U.S. Census Bureau: Northeast, Midwest, South, and West.

## DATA

### Alcohol Consumption Data

AEDS makes every effort to obtain alcoholic beverage sales data from all States and the District of Columbia, because sales data more accurately reflect actual consumption of alcoholic beverages than do production and shipments data from beverage industry sources. States provide sales data in the form of volume or tax revenue that AEDS converts to gallons by using State tax rates. For 2016, AEDS received beverage sales and/or tax receipts reports from 39 States. AEDS also received spirits and wine sales data for control states from the National Alcohol Beverage Control Association. When State data were unavailable or unusable, shipment data from beverage industry sources (Beverage Information Group 2017*a, b, c*) were used as a supplementary data source (Table 3). This report updates previous beer industry shipment data for years 1995–2015 with barrels of 31 gallons (in thousands) figures. AEDS determined that barrels of 31 gallons (in thousands) figures would be more accurate for use in this report because the Beverage Information Group provides updated annual data for 7 years prior to the reporting year. National and regional consumption data were estimated based on the sum of corresponding State-level volumes in gallons. The mixed use of data from sales and shipments sources appears to have little effect on overall trends in per capita alcohol consumption (Campbell et al. 1994; Haughwout et al. 2015). Some of the consumption estimates reported in the current report may differ slightly from those published in the previous year due to updates and

revisions based on data received after publication. The types of data sources used to obtain alcohol consumption data are listed for years 2001–2016 in this report’s data file (<http://pubs.niaaa.nih.gov/publications/surveillance.htm>).

### Population Data

State population estimates for people ages 14 and older were obtained from the Centers for Disease Control and Prevention’s WONDER online query system, which provides bridged-race population estimates produced by the U.S. Census Bureau in collaboration with the National Center for Health Statistics (U.S. Department of Health and Human Services 2017). These data are used as denominators to calculate the per capita consumption figures.

To make the trend data more precise, AEDS revises data published in previous reports when the Census Bureau makes revisions to its population estimates. This report updates the 2010–2015 population estimates using revised bridged-race estimates of the July 1 resident population from the Vintage 2016 postcensal series (U.S. Department of Health and Human Services 2017).

## METHODS

### Conversion of Ethanol Content

AEDS uses an estimate of average ethanol content in the alcoholic beverages to convert the gallons of sold or shipped beer, wine, and spirits into gallons of ethanol (pure alcohol) before calculating per capita consumption estimates. The ethanol conversion coefficients (ECC; i.e., proportion of pure alcohol for each beverage type) are 0.045 for beer, 0.129 for wine, and 0.411 for spirits, for data years 1977–2016 (Doernberg and Stinson 1985). Following the ethanol conversions, gallons of ethanol for beer, wine, and spirits are summed to gallons of ethanol for all beverages.

AEDS has considered changes in the alcoholic beverage market that may affect the ECCs used in

the current report. For instance, the introduction of “light” beer, “light” wines, and coolers (both wine and spirits) may have slightly lowered the average ethanol content in some alcoholic beverages. Kling (1989, 1991) suggests that there were decreases in the ethanol content of spirits during the 1980s. However, such decreases may be offset by the increase in sales of drinks with higher ethanol content, such as premium brand liquors, fortified wines, malt liquors, and locally produced beers and ales (microbrews). “Ice” beers and “dry” beers, for example, both have higher ethanol content than either premium or light beers (M. Shanken Communications, Inc. 1994). Therefore, changes in the average net ethanol content across all beverages have probably been minimal and not large enough to alter the trends in overall per capita consumption.

Studies by Kerr and colleagues (2006*a, b*) estimated national average and State-specific ECCs for beer, wine, and spirits for each year from 1950 to 2002. Their method derived ECCs for each beverage type based on three components of data: (1) market shares for subcategories within the beverage type (e.g., table wine and wine coolers within wine); (2) market shares for leading brands in each subcategory; and (3) ethanol contents of these leading brands. Their findings suggest that in 2002, the national average ethanol content was 4.67 percent for beer, 11.45 percent for wine, and 36.90 percent for spirits. Their State-specific estimates indicate that ECCs for all beverage types varied by State and over time. AEDS compared per capita consumption estimates derived by Kerr and colleagues with data presented in this surveillance report. Results revealed that cross-State correlations between the two data sets are higher than 0.99 for all three beverage types. Similar patterns also were observed in national trends between the two sets of estimates, although there were some differences in absolute values that fluctuated over time. Given the fact that Kerr and colleagues applied their ECCs to the same

AEDS beverage volume data to derive their per capita consumption estimates, it was concluded that consumption trends are mainly driven by beverage volumes rather than changes in the ECC estimates.

Because most of the analyses provided in this surveillance report are focused on consumption trends over time, and because of the time- and labor-intensive nature of estimating the ECC every year for each State, AEDS will continue to use the current fixed set of ECCs.

### **Population Denominator**

In this report, AEDS uses the population of people ages 14 and older to calculate per capita consumption rates. Although age 14 is below the minimum legal age for the purchase of alcoholic beverages throughout the United States, most self-report surveys indicate that many people drink alcoholic beverages at age 14. For example, data from the NIAAA 2012–2013 National Epidemiologic Survey on Alcohol and Related Conditions indicate that 9.56 percent of current drinkers ages 18 and older in the United States began drinking at age 14 or younger (Chen et al. 2016). Results from the *Monitoring the Future* survey in 2016 (Johnston et al. 2017) indicate that 17.6 percent of eighth graders (students ages 13 to 14) reported past-year use of alcohol (i.e., beyond a few sips). Also, using data from the National Survey on Drug Use and Health 2013–2015, Chen and colleagues (2017) found the median age of initiation of alcohol use among people ages 12 to 20 to be age 14.6. Nonetheless, per capita consumption estimates for population ages 21 years and older are provided in the data file of this report

(<http://pubs.niaaa.nih.gov/publications/surveillance.htm>).

### **Estimation of Per Capita Ethanol Consumption**

Per capita ethanol consumption for each beverage type are calculated by multiplying national, State, or regional beverage volume by the corresponding ECC and dividing by the

national, State, or regional population ages 14 and older. Per capita consumption of ethanol of all beverages is calculated directly from the estimated gallons of ethanol for all beverages divided by the population.

Percentage change calculations in this report are based on the numbers presented in the tables, which are rounded to two decimal places.

### Limitations

Readers familiar with survey reports and other scientific literature often are accustomed to the presentation of significance tests, or confidence intervals, on any data comparisons or trends. However, because data presented in this report are based on total actual sales and/or shipments, no measures of statistical significance are provided. Nonetheless, it is important to note that these data are still only estimates and may be subject to reporting error and random fluctuation over time.

In addition to ECCs, many factors may result in inaccuracies in estimates of per capita alcohol consumption. For instance, these estimates in some States may be inflated by such factors as cross-border sales to buyers from neighboring States (e.g., in New Hampshire) or tourist consumption of alcohol (e.g., in Washington, D.C.). Other factors include variation in State reporting practices for sales of alcoholic beverages; time delay between State taxation records and actual consumption; exclusion of alcohol contained in medications and foods; unrecorded legal home production; and illicit production, importation, and sales (Rehm et al. 2014). These factors are discussed in detail in the AEDS data reference manual on per capita alcohol consumption (Nephew et al. 2004). Note that the word *apparent* in this report's title is pertinent, because the estimates in this report are based on the reported volumes of alcoholic beverages released to the market for sale and not on actual measures of people's alcohol consumption.

## REFERENCES

- Beverage Information Group. *Beer Handbook, 2017*. Norwalk, CT: Beverage Information Group, 2017a.
- Beverage Information Group. *Liquor Handbook, 2017*. Norwalk, CT: Beverage Information Group, 2017b.
- Beverage Information Group. *Wine Handbook, 2017*. Norwalk, CT: Beverage Information Group, 2017c.
- Campbell, K.E.; Clem, D.; and Williams, G.D. *Technical Report: 1986–91 Per Capita Ethanol Consumption Trends Using Beverage Industry Shipments Data Compared to Combined Sales/Tax Receipt and Shipments Data*. Washington, DC: NIAAA, Alcohol Epidemiologic Data System, August 1994.
- Chen, C.M.; Slater, M.E.; Castle, I-J.P.; and Grant, B.F. *Alcohol Use and Alcohol Use Disorders in the United States: Main Findings from the 2012–2013 National Epidemiologic Survey on Alcohol and Related Conditions-III* (U.S. Alcohol Epidemiologic Data Reference Manual, Vol. 10). Rockville, MD: NIAAA, Alcohol Epidemiologic Data System, April 2016.
- Chen, C.M.; Yi, H.; and Faden, V.B. *Surveillance Report #107: Trends in Underage Drinking in the United States, 1991–2015*. Rockville, MD: NIAAA, Division of Epidemiology and Prevention Research, Alcohol Epidemiologic Data System, March 2017.
- Doernberg, D.; and Stinson, F.S. *U.S. Apparent Consumption of Alcoholic Beverages Based on State Sales, Taxation, or Receipt Data* (U.S. Alcohol Epidemiologic Data Reference Manual, Vol. 1). Washington, DC: U.S Government Printing Office, September 1985.
- Haughwout, S.P.; Castle, I-J.P.; and LaVallee, R.A. *Comparison of State Alcoholic Beverage Sales Data with Industry Shipment Data, 2001–2013: Apparent Per Capita Alcohol Consumption Surveillance Report Methodological Addendum*. Rockville, MD: NIAAA, Division of Epidemiology and Prevention Research, Alcohol Epidemiologic Data System, April 2015. Available at: [http://pubs.niaaa.nih.gov/publications/surveillance102/m\\_addendum.pdf](http://pubs.niaaa.nih.gov/publications/surveillance102/m_addendum.pdf). Accessed March 13, 2018.
- Haughwout, S.P.; and Slater, M.E. *Surveillance Report #108: Apparent Per Capita Alcohol Consumption: National, State, and Regional Trends, 1977–2015*. Rockville, MD: NIAAA, Division of Epidemiology and Prevention Research, Alcohol Epidemiologic Data System, April 2017.
- Hyman, M.; Zimmerman, M.; Gurioli, C.; and Helrich, A. *Drinkers, Drinking and Alcohol-Related Mortality and Hospitalizations: A Statistical Compendium, 1980 ed.* New Brunswick, NJ: Rutgers University, 1980.
- Johnston, L.D.; O'Malley, P.M.; Miech, R.A.; Bachman, J.G.; and Schulenberg, J.E. *Monitoring the Future, National Results on Adolescent Drug Use: Overview of Key Findings, 2016*. Ann Arbor, MI: Institute for Social Research, University of Michigan, 2017.

- Kerr, W.C.; Greenfield, T.K.; Tujague, J.; and Brown, S.E. The alcohol content of wine consumed in the US and per capita consumption: New estimates reveal different trends. *Alcoholism: Clinical and Experimental Research* 30(3):516–522, 2006a.
- Kerr, W.C.; Greenfield, T.K.; and Tujague, J. Estimates of the mean alcohol concentration of the spirits, wine, and beer sold in the United States and per capita consumption: 1950 to 2002. *Alcoholism: Clinical and Experimental Research* 30(9):1583–1591, 2006b.
- Kling, W. Measurement of ethanol consumed in distilled spirits. *Journal of Studies on Alcohol* 50:456–460, 1989.
- Kling, W. Errata: Measurement of ethanol consumed in distilled spirits. *Journal of Studies on Alcohol* 52:503–504, 1991.
- M. Shanken Communications, Inc. *The U.S. Beer Market: Impact Databank Review and Forecast, 1994 Edition*. New York: Shanken, 1994.
- National Institute on Alcohol Abuse and Alcoholism. *Rethinking Drinking: Alcohol and Your Health*. NIH Pub. No. 13-3770. Rockville, MD: National Institutes of Health, 2010.
- Nephew, T.M.; Yi, H.; Williams, G.D.; Stinson, F.S.; and Dufour, M.C. *Apparent Consumption of Alcoholic Beverages Based on State Sales, Taxation, or Receipt Data* (U.S. Alcohol Epidemiologic Data Reference Manual, Vol. 1, 4th ed.). NIH Publication No. 04-5563. Bethesda, MD: National Institutes of Health, June 2004.
- Rehm, J.; Kailasapillai, S.; Larsen, E.; Rehm, M.X.; Samokhvalov, A.V.; Shield, K.D.; Roerecke, M.; and Lachenmeier, D.W. A systematic review of the epidemiology of unrecorded alcohol consumption and the chemical composition of unrecorded alcohol. *Addiction* 109:880–893, 2014.
- U.S. Department of Health and Human Services, *Healthy People 2020*. Washington, DC: DHHS, 2012. Available at: <http://www.healthypeople.gov/2020/topicsobjectives2020/objectiveslist.aspx?topicId=40>. Accessed March 13, 2018.
- U.S. Department of Health and Human Services, Centers for Disease Control and Prevention (CDC), National Center for Health Statistics (NCHS). *Bridged-Race Population Estimates, United States July 1st Resident Population by State, County, Age, Sex, Bridged-Race, and Hispanic Origin*. Compiled from 1990–1999 bridged-race intercensal population estimates (released by NCHS on 7/26/2004); revised bridged-race 2000–2009 intercensal population estimates (released by NCHS on 10/26/2012); and bridged-race Vintage 2016 (2010–2016) postcensal population estimates (released by NCHS on 6/26/2017). Available on CDC WONDER Online Database at: <https://wonder.cdc.gov/bridged-race-v2016.html>. Accessed March 13, 2018.

## List of Figures

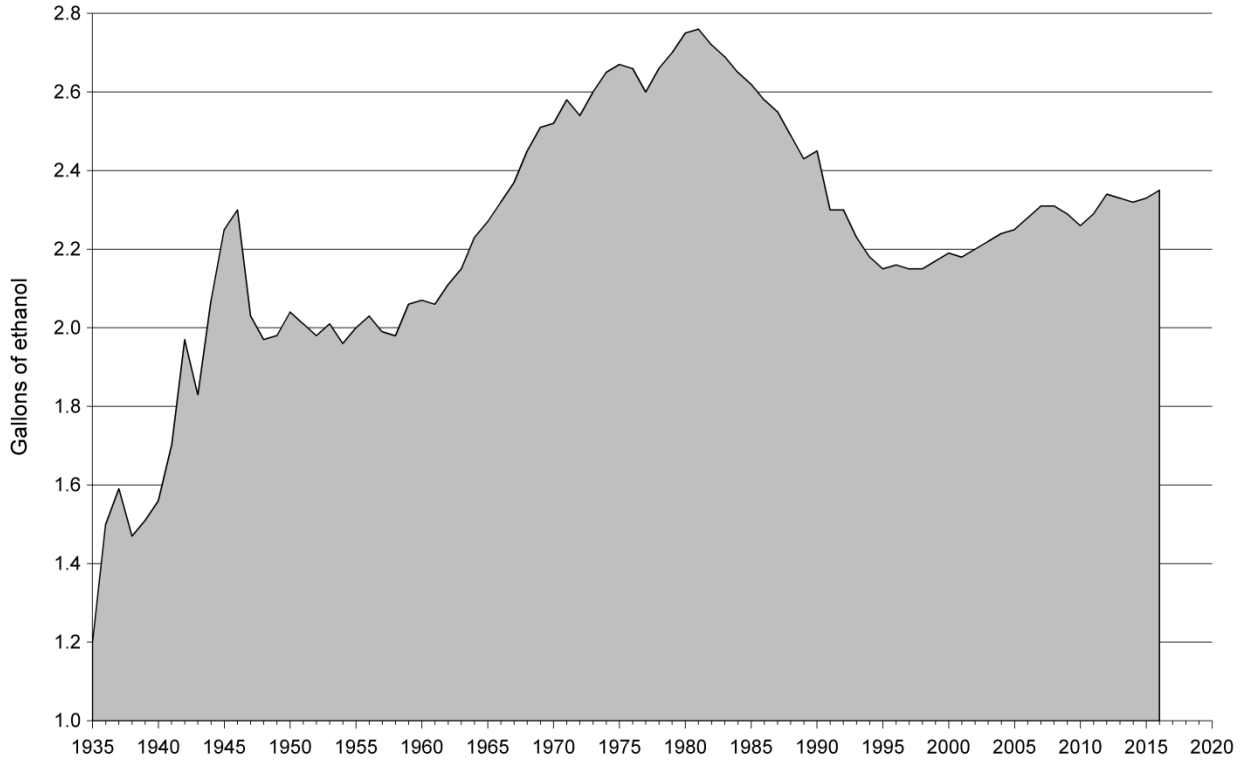
		Page
Figure 1	Total per capita ethanol consumption, United States, 1935–2016 .....	7
Figure 2	Per capita ethanol consumption by beverage type, United States, 1977–2016 ...	7
Figure 3	Percentage change in per capita ethanol consumption, United States, 1977–2016 .....	8
Figure 4	Total per capita consumption of gallons of ethanol by State, United States, 2016 .....	9
Figure 5	Percentage change in total per capita ethanol consumption by State, United States, 2015–2016.....	9
Figure 6	Total per capita ethanol consumption by region, United States, 1977–2016 .....	10
Figure 7	Per capita ethanol consumption from beer by region, United States, 1977–2016 .....	10
Figure 8	Per capita ethanol consumption from wine by region, United States, 1977–2016 .....	11
Figure 9	Per capita ethanol consumption from spirits by region, United States, 1977–2016 .....	11

## List of Tables

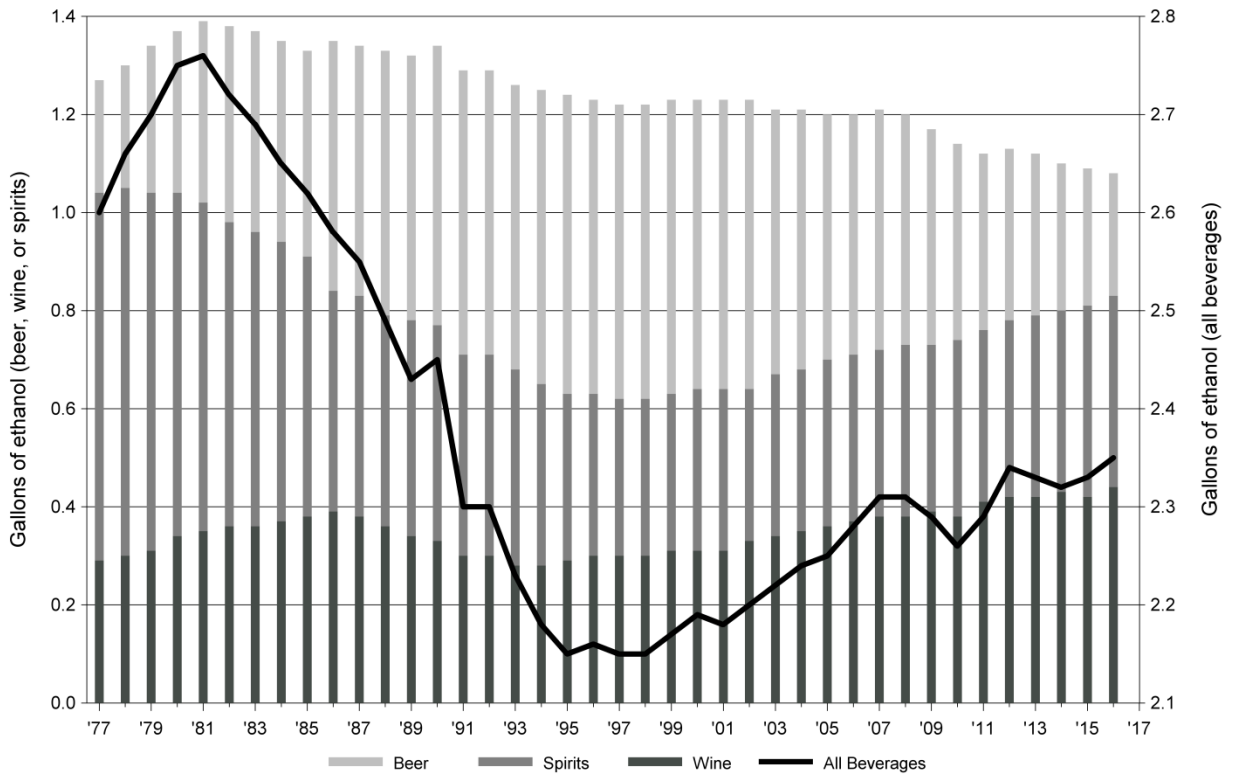
		Page
Table 1	Apparent per capita ethanol consumption, United States, 1850–2016.....	12
Table 2	Apparent alcohol consumption for States, census regions, and the United States, 2016.....	14
Table 3	Sources of alcoholic beverages sales and shipment data by State and beverage type, 2016 .....	16
Table 4	Per capita ethanol consumption for States, census regions, and the United States, 1977–2016.....	18



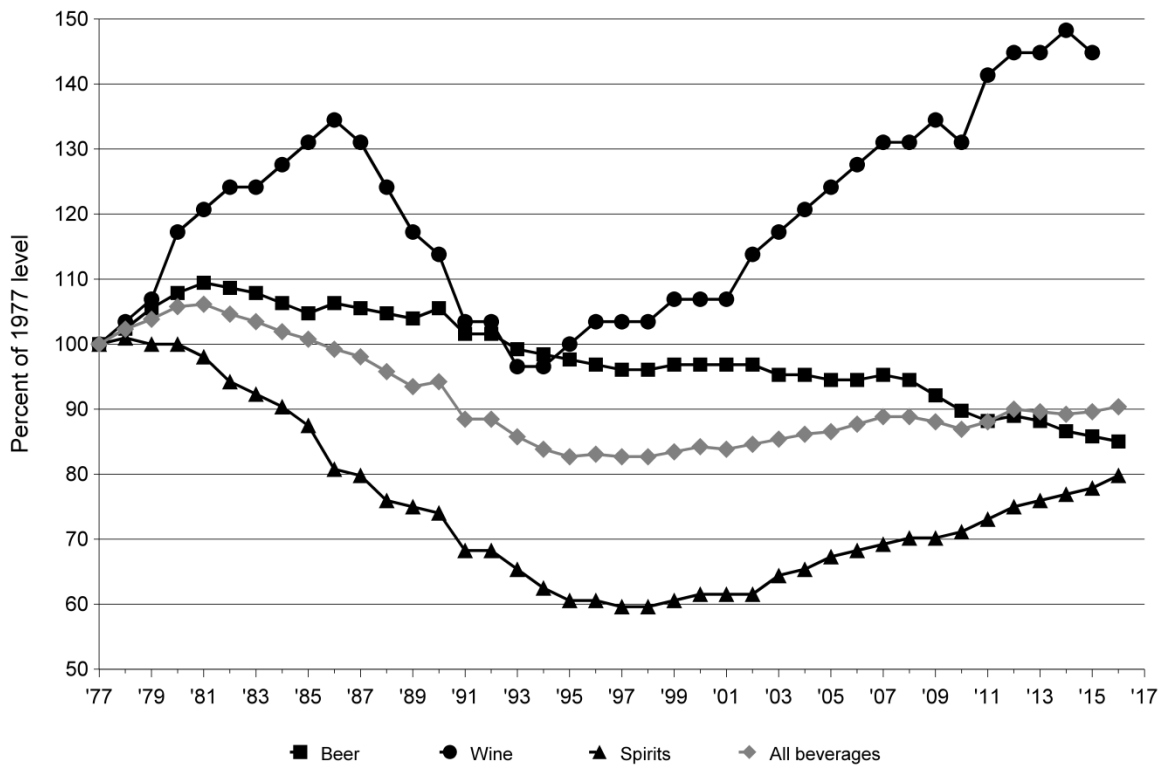
**Figure 1.** Total per capita ethanol consumption, United States, 1935–2016



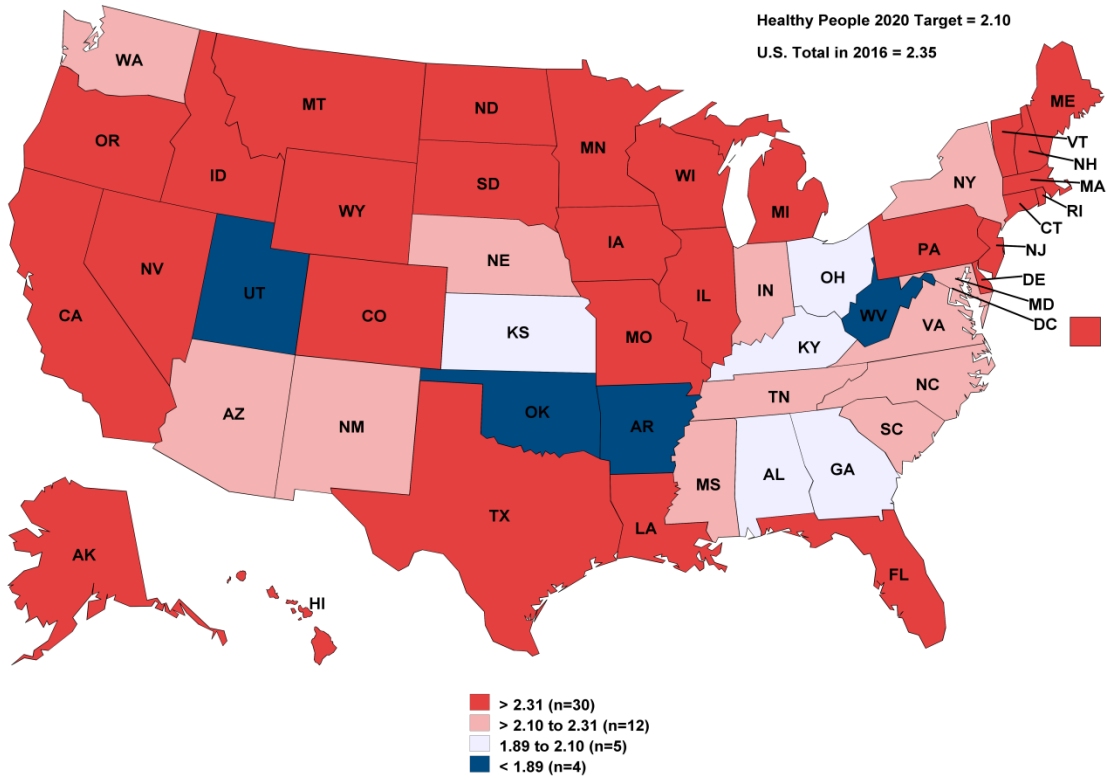
**Figure 2.** Per capita ethanol consumption by beverage type, United States, 1977–2016



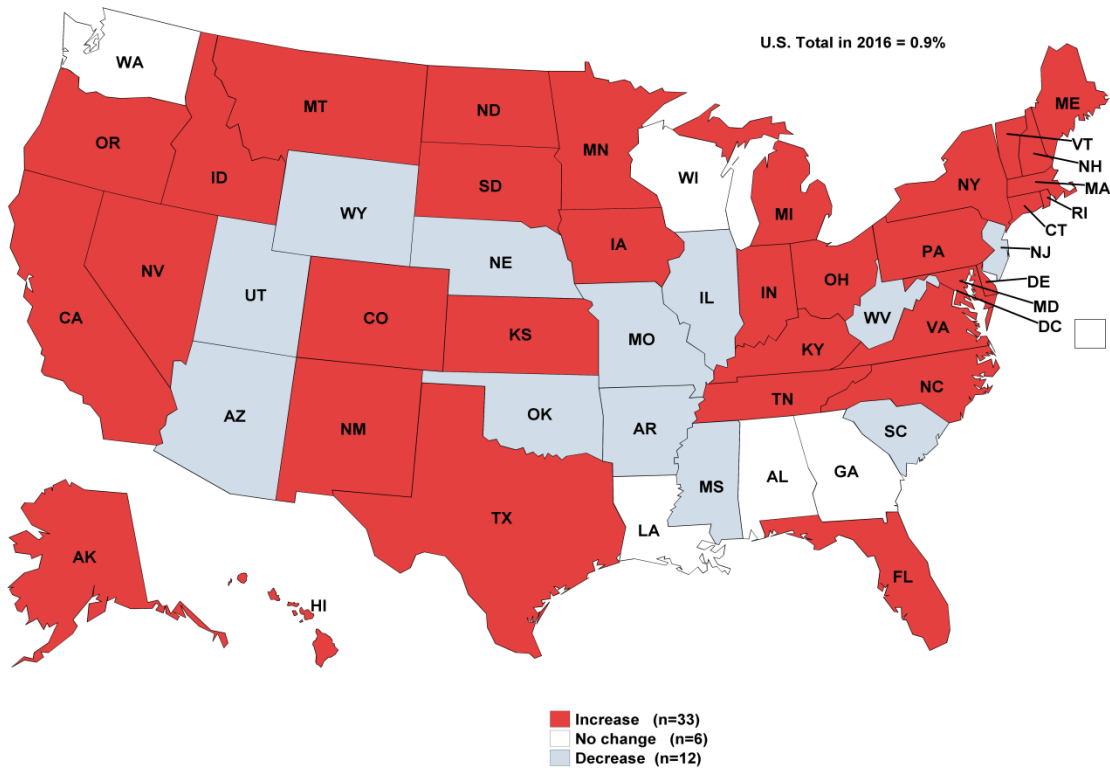
**Figure 3.** Percentage change in per capita ethanol consumption, United States, 1977–2016



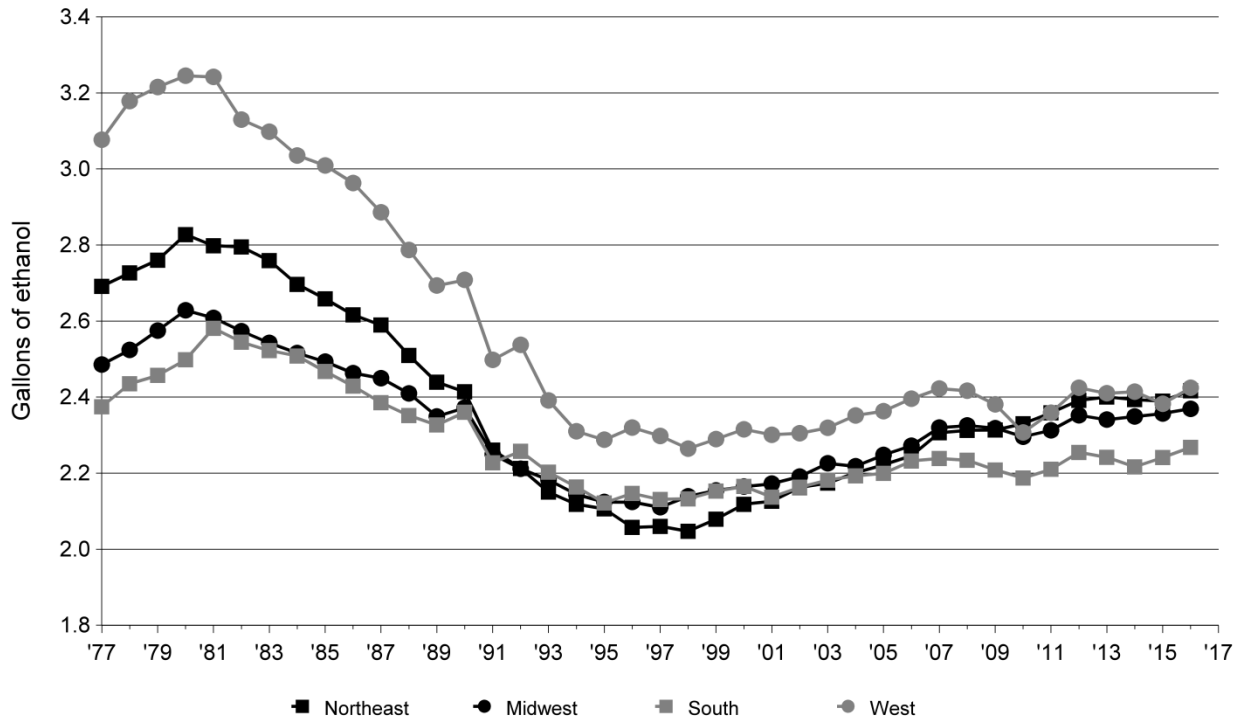
**Figure 4.** Total per capita consumption of gallons of ethanol by State, United States, 2016



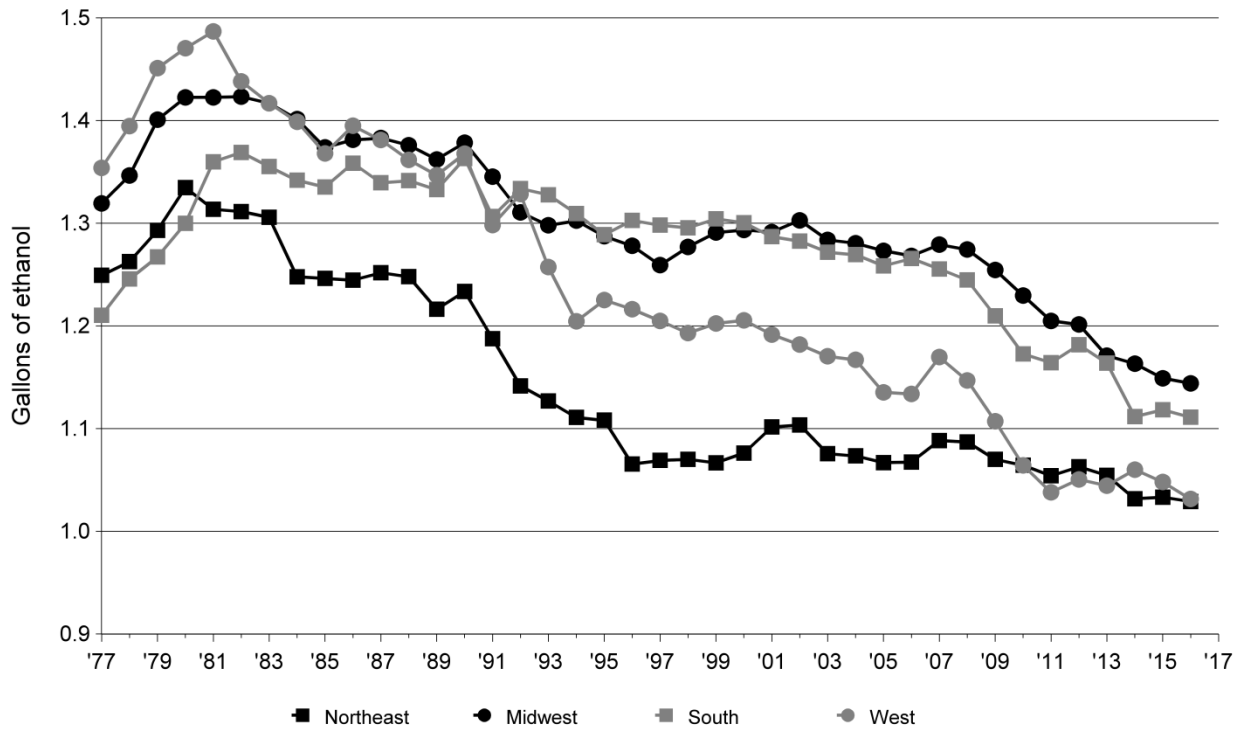
**Figure 5.** Percentage change in total per capita ethanol consumption by State, United States, 2015–2016



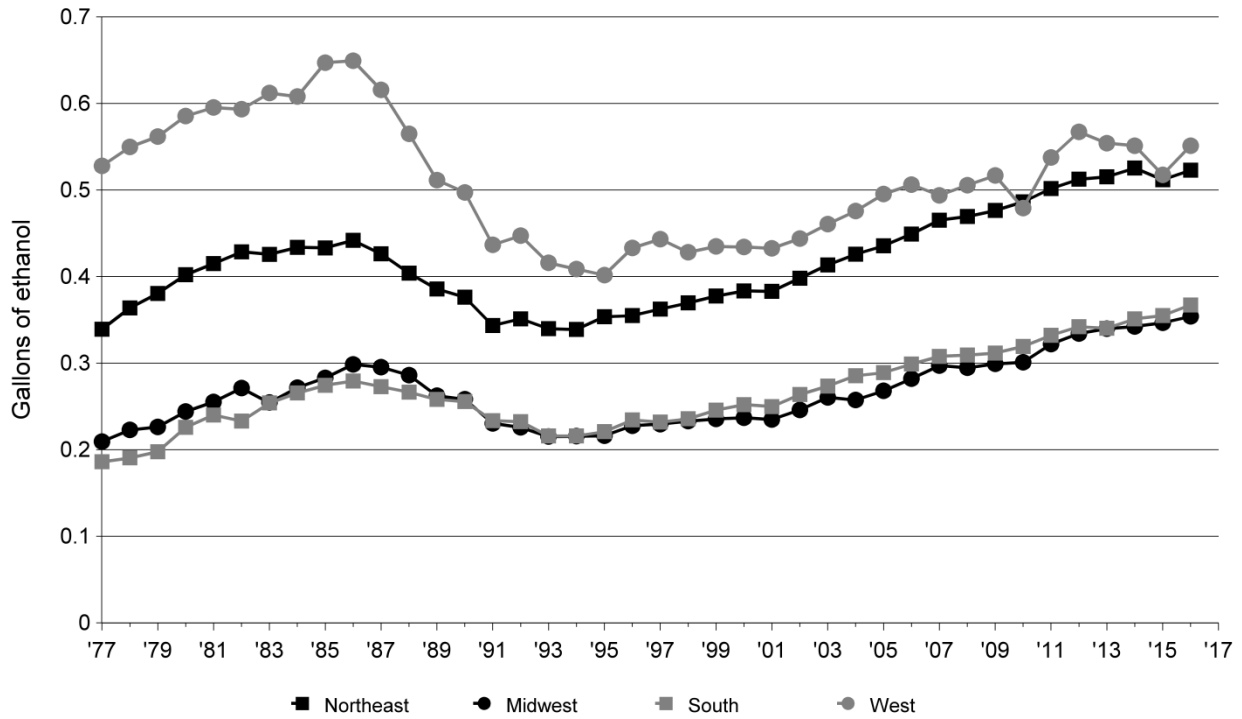
**Figure 6.** Total per capita ethanol consumption by region, United States, 1977–2016



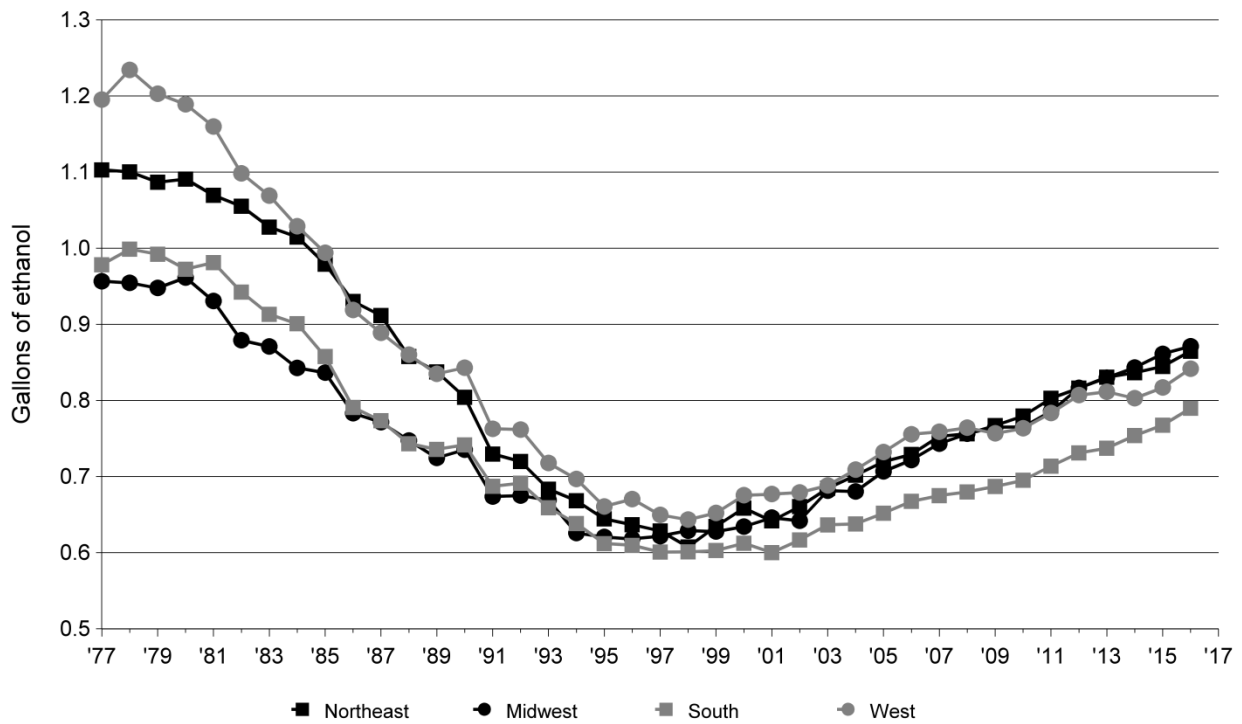
**Figure 7.** Per capita ethanol consumption from beer by region, United States, 1977–2016



**Figure 8.** Per capita ethanol consumption from wine by region, United States, 1977–2016



**Figure 9.** Per capital ethanol consumption from spirits by region, United States, 1977–2016



**Table 1.** Apparent per capita ethanol consumption, United States, 1850–2016. (Gallons of ethanol based on population ages 15 and older prior to 1970 and on population ages 14 and older thereafter.)

Year	Beer	Wine	Spirits	All beverages
2016.....	1.08	0.44	0.83	2.35
2015.....	1.09	0.42	0.81	2.33
2014.....	1.10	0.43	0.80	2.32
2013.....	1.12	0.42	0.79	2.33
2012.....	1.13	0.42	0.78	2.34
2011.....	1.12	0.41	0.76	2.29
2010.....	1.14	0.38	0.74	2.26
2009.....	1.17	0.39	0.73	2.29
2008.....	1.20	0.38	0.73	2.31
2007.....	1.21	0.38	0.72	2.31
2006.....	1.20	0.37	0.71	2.28
2005.....	1.20	0.36	0.70	2.25
2004.....	1.21	0.35	0.68	2.24
2003.....	1.21	0.34	0.67	2.22
2002.....	1.23	0.33	0.64	2.20
2001.....	1.23	0.31	0.64	2.18
2000.....	1.23	0.31	0.64	2.19
1999.....	1.23	0.31	0.63	2.17
1998.....	1.22	0.30	0.62	2.15
1997.....	1.22	0.30	0.62	2.15
1996.....	1.23	0.30	0.63	2.16
1995.....	1.24	0.29	0.63	2.15
1994.....	1.25	0.28	0.65	2.18
1993.....	1.26	0.28	0.68	2.23
1992.....	1.29	0.30	0.71	2.30
1991.....	1.29	0.30	0.71	2.30
1990.....	1.34	0.33	0.77	2.45
1989.....	1.32	0.34	0.78	2.43
1988.....	1.33	0.36	0.79	2.49
1987.....	1.34	0.38	0.83	2.55
1986.....	1.35	0.39	0.84	2.58
1985.....	1.33	0.38	0.91	2.62
1984.....	1.35	0.37	0.94	2.65
1983.....	1.37	0.36	0.96	2.69
1982.....	1.38	0.36	0.98	2.72
1981.....	1.39	0.35	1.02	2.76
1980.....	1.37	0.34	1.04	2.75
1979.....	1.34	0.31	1.04	2.70
1978.....	1.30	0.30	1.05	2.66
1977.....	1.27	0.29	1.04	2.60
1976.....	1.25	0.32	1.09	2.66
1975.....	1.25	0.32	1.10	2.67
1974.....	1.24	0.31	1.10	2.65
1973.....	1.20	0.31	1.10	2.60
1972.....	1.16	0.30	1.08	2.54
1971.....	1.15	0.31	1.12	2.58
1970.....	1.14	0.27	1.11	2.52
1969.....	1.12	0.26	1.13	2.51
1968.....	1.09	0.26	1.10	2.45
1967.....	1.07	0.25	1.05	2.37
1966.....	1.06	0.24	1.02	2.32
1965.....	1.04	0.24	0.99	2.27
1964.....	1.04	0.24	0.95	2.23
1963.....	1.01	0.23	0.91	2.15

Numbers may not sum because of rounding.

**Table 1.** Apparent per capita ethanol consumption, United States, 1850–2016. (Gallons of ethanol, based on population ages 15 and older prior to 1970 and on population ages 14 and older thereafter.) (Continued)

Year	Beer	Wine	Spirits	All beverages
1962 .....	0.99	0.22	0.90	2.11
1961 .....	0.97	0.23	0.86	2.06
1960 .....	0.99	0.22	0.86	2.07
1959 .....	1.00	0.22	0.84	2.06
1958 .....	0.96	0.22	0.80	1.98
1957 .....	0.97	0.22	0.80	1.99
1956 .....	1.00	0.22	0.81	2.03
1955 .....	1.01	0.22	0.77	2.00
1954 .....	1.01	0.21	0.74	1.96
1953 .....	1.04	0.20	0.77	2.01
1952 .....	1.04	0.21	0.73	1.98
1951 .....	1.03	0.20	0.78	2.01
1950 .....	1.04	0.23	0.77	2.04
1949 .....	1.06	0.22	0.70	1.98
1948 .....	1.07	0.20	0.70	1.97
1947 .....	1.11	0.16	0.76	2.03
1946 .....	1.07	0.24	0.99	2.30
1945 .....	1.17	0.20	0.88	2.25
1944 .....	1.13	0.18	0.76	2.07
1943 .....	1.00	0.17	0.66	1.83
1942 .....	0.90	0.22	0.85	1.97
1941 .....	0.81	0.18	0.71	1.70
1940 .....	0.73	0.16	0.67	1.56
1939 .....	0.75	0.14	0.62	1.51
1938 .....	0.75	0.13	0.59	1.47
1937 .....	0.82	0.13	0.64	1.59
1936 .....	0.79	0.12	0.59	1.50
1935 .....	0.68	0.09	0.43	1.20
1934 .....	0.61	0.07	0.29	0.97
(Prohibition)				
1916–1919 .....	1.08	0.12	0.76	1.96
1911–1915 .....	1.48	0.14	0.94	2.56
1906–1910 .....	1.47	0.17	0.96	2.60
1901–1905 .....	1.31	0.13	0.95	2.39
1896–1900 .....	1.19	0.10	0.77	2.06
1891–1895 .....	1.17	0.11	0.95	2.23
1881–1890 .....	0.90	0.14	0.95	1.99
1871–1880 .....	0.56	0.14	1.02	1.72
1870 .....	0.44	0.10	1.53	2.07
1860 .....	0.27	0.10	2.16	2.53
1850 .....	0.14	0.08	1.88	2.10

Numbers may not sum because of rounding.

Note: Data prior to 1977 are from Hyman et al. 1980.

**Table 2.** Apparent alcohol consumption for States, census regions, and the United States, 2016. (Volume and ethanol in thousands of gallons, per capita ethanol consumption in gallons, based on population ages 14 and older.)

State or other geographic area	Beer			Wine			Spirits			All beverages		
	Volume	Ethanol	Per capita	Volume	Ethanol	Per capita	Volume	Ethanol	Per capita	Ethanol	Per capita	U.S. decile
Alabama .....	97,712	4,397	1.09	8,093	1,044	0.26	6,402	2,631	0.65	8,072	2.01	9
Alaska .....	15,146	682	1.15	2,586	334	0.56	1,783	733	1.23	1,748	2.94	2
Arizona .....	143,313	6,449	1.14	17,540	2,263	0.40	10,705	4,400	0.78	13,112	2.31	6
Arkansas .....	50,621	2,278	0.93	4,124	532	0.22	3,850	1,582	0.65	4,392	1.80	10
California .....	687,240	30,926	0.96	148,347	19,137	0.59	61,036	25,086	0.78	75,148	2.33	6
Colorado.....	115,745	5,209	1.14	18,164	2,343	0.51	12,861	5,286	1.16	12,837	2.81	3
Connecticut .....	56,761	2,554	0.85	14,431	1,862	0.62	7,188	2,954	0.98	7,370	2.45	5
Delaware .....	21,097	949	1.20	4,513	582	0.73	3,461	1,422	1.79	2,954	3.72	1
Dist. of Columb. ....	14,632	658	1.13	4,642	599	1.03	2,389	982	1.69	2,239	3.85	1
Florida .....	422,154	18,997	1.09	71,538	9,228	0.53	43,796	18,000	1.03	46,225	2.65	4
Georgia .....	185,163	8,332	0.99	16,337	2,107	0.25	14,105	5,797	0.69	16,237	1.94	9
Hawaii .....	33,852	1,523	1.29	5,257	678	0.57	2,228	916	0.77	3,117	2.63	4
Idaho .....	27,593	1,242	0.92	12,360	1,594	1.19	2,647	1,088	0.81	3,924	2.92	2
Illinois .....	262,276	11,802	1.12	35,041	4,520	0.43	19,827	8,149	0.77	24,472	2.32	6
Indiana .....	118,132	5,316	0.98	12,321	1,589	0.29	11,802	4,851	0.89	11,756	2.17	8
Iowa.....	74,121	3,335	1.30	4,647	599	0.23	5,423	2,229	0.87	6,164	2.40	5
Kansas .....	53,477	2,406	1.02	2,623	338	0.14	4,314	1,773	0.75	4,518	1.92	10
Kentucky .....	78,371	3,527	0.96	6,225	803	0.22	7,047	2,896	0.79	7,226	1.98	9
Louisiana.....	106,082	4,774	1.25	9,978	1,287	0.34	9,287	3,817	1.00	9,878	2.59	4
Maine .....	34,441	1,550	1.36	3,893	502	0.44	2,796	1,149	1.01	3,201	2.81	3
Maryland .....	91,886	4,135	0.83	15,407	1,988	0.40	11,167	4,590	0.92	10,712	2.15	8
Massachusetts .....	121,900	5,485	0.95	28,934	3,732	0.65	13,590	5,586	0.97	14,804	2.57	4
Michigan .....	190,291	8,563	1.04	25,143	3,243	0.39	18,350	7,542	0.91	19,348	2.34	6
Minnesota.....	115,643	5,204	1.15	15,507	2,000	0.44	12,911	5,306	1.17	12,511	2.77	3
Mississippi.....	69,347	3,121	1.28	3,298	425	0.17	4,584	1,884	0.77	5,430	2.23	7
Missouri.....	128,846	5,798	1.15	14,643	1,889	0.38	11,712	4,814	0.96	12,501	2.49	5
Montana .....	31,048	1,397	1.62	3,454	446	0.52	2,062	847	0.98	2,690	3.11	2
Nebraska.....	44,361	1,996	1.30	2,596	335	0.22	2,669	1,097	0.71	3,428	2.23	7
Nevada.....	75,640	3,404	1.41	11,432	1,475	0.61	8,455	3,475	1.44	8,353	3.46	1
New Hampshire .....	47,430	2,134	1.87	7,804	1,007	0.88	5,554	2,283	2.00	5,424	4.76	1

Decile values (1 = highest) apply only to State-level data. Numbers may not sum because of rounding.



**Table 2.** Apparent alcohol consumption for States, census regions, and the United States, 2016. (Volume and ethanol in thousands of gallons, per capita ethanol consumption in gallons, based on population ages 14 and older.) (Continued)

State or other geographic area	Beer			Wine			Spirits			All beverages		
	Volume	Ethanol	Per capita	Volume	Ethanol	Per capita	Volume	Ethanol	Per capita	Ethanol	Per capita	U.S. decile
New Jersey .....	135,941	6,117	0.82	34,027	4,389	0.59	16,656	6,846	0.92	17,352	2.34	6
New Mexico .....	41,979	1,889	1.11	4,110	530	0.31	3,504	1,440	0.85	3,859	2.27	7
New York .....	332,576	14,966	0.91	67,598	8,720	0.53	31,431	12,918	0.78	36,604	2.22	8
North Carolina ..	196,313	8,834	1.05	28,085	3,623	0.43	13,122	5,393	0.64	17,850	2.13	9
North Dakota ...	22,384	1,007	1.64	1,601	207	0.34	1,932	794	1.29	2,008	3.26	1
Ohio .....	245,520	11,048	1.15	22,788	2,940	0.31	13,600	5,590	0.58	19,578	2.04	9
Oklahoma .....	74,307	3,344	1.05	4,816	621	0.20	4,886	2,008	0.63	5,973	1.88	10
Oregon .....	94,124	4,236	1.24	15,910	2,052	0.60	7,612	3,128	0.91	9,416	2.75	3
Pennsylvania ...	312,418	14,059	1.31	27,230	3,513	0.33	18,809	7,731	0.72	25,302	2.36	5
Rhode Island ...	18,700	842	0.94	4,022	519	0.58	2,297	944	1.05	2,304	2.57	5
South Carolina	107,477	4,836	1.18	8,097	1,045	0.25	7,926	3,258	0.79	9,139	2.22	7
South Dakota ...	22,537	1,014	1.46	1,688	218	0.31	1,863	766	1.10	1,998	2.87	3
Tennessee .....	124,793	5,616	1.02	13,875	1,790	0.33	10,569	4,344	0.79	11,749	2.14	8
Texas .....	642,608	28,917	1.30	59,177	7,634	0.34	37,352	15,352	0.69	51,903	2.34	6
Utah .....	32,457	1,461	0.63	3,416	441	0.19	2,962	1,217	0.52	3,119	1.34	10
Vermont .....	18,600	837	1.56	3,274	422	0.79	949	390	0.73	1,649	3.08	2
Virginia .....	154,231	6,940	1.00	26,246	3,386	0.49	11,177	4,594	0.66	14,920	2.14	8
Washington .....	128,030	5,761	0.96	24,417	3,150	0.52	11,355	4,667	0.78	13,578	2.26	7
West Virginia ...	40,951	1,843	1.19	1,289	166	0.11	1,730	711	0.46	2,720	1.76	10
Wisconsin .....	144,956	6,523	1.36	14,981	1,933	0.40	14,191	5,832	1.22	14,288	2.98	2
Wyoming .....	12,498	562	1.18	1,172	151	0.32	1,356	557	1.17	1,271	2.67	4
<i>Regions</i>												
Northeast .....	1,078,766	48,544	1.03	191,213	24,666	0.52	99,270	40,800	0.86	114,011	2.42	
Midwest .....	1,422,544	64,014	1.14	153,581	19,812	0.35	118,594	48,742	0.87	132,569	2.37	
South .....	2,477,743	111,498	1.11	285,742	36,861	0.37	192,850	79,261	0.79	227,621	2.27	
West .....	1,438,665	64,740	1.03	268,165	34,593	0.55	128,564	52,840	0.84	152,173	2.42	
U.S. total .....	6,417,718	288,797	1.08	898,700	115,932	0.44	539,278	221,643	0.83	626,373	2.35	

Decile values (1 = highest) apply only to State-level data. Numbers may not sum because of rounding.

**Table 3.** Sources of alcoholic beverage sales or shipment data by State and beverage type, 2016.

State	Beer	Wine	Spirits
Alabama .....	Industry	Industry	State <sup>4</sup>
Alaska.....	State <sup>1</sup>	State <sup>1</sup>	State <sup>1</sup>
Arizona .....	Industry	Industry	Industry
Arkansas .....	State <sup>2</sup>	State <sup>2</sup>	State <sup>2</sup>
California .....	State <sup>3</sup>	State <sup>3</sup>	State <sup>3</sup>
Colorado.....	State <sup>1</sup>	State <sup>1</sup>	State <sup>1</sup>
Connecticut .....	State <sup>1</sup>	State <sup>1</sup>	State <sup>1</sup>
Delaware .....	State <sup>1</sup>	State <sup>1</sup>	State <sup>1</sup>
Dist. of Columbia .....	Industry	Industry	Industry
Florida .....	State <sup>1</sup>	State <sup>1</sup>	State <sup>1</sup>
Georgia.....	Industry	Industry	Industry
Hawaii.....	Industry	Industry	Industry
Idaho .....	State <sup>2</sup>	State <sup>2</sup>	State <sup>4</sup>
Illinois .....	State <sup>1</sup>	State <sup>1</sup>	State <sup>1</sup>
Indiana.....	State <sup>1</sup>	State <sup>1</sup>	State <sup>1</sup>
Iowa.....	State <sup>3</sup>	State <sup>3</sup>	State <sup>3</sup>
Kansas .....	State <sup>2</sup>	Industry	State <sup>2</sup>
Kentucky.....	State <sup>2</sup>	State <sup>2</sup>	State <sup>2</sup>
Louisiana .....	Industry	State <sup>1</sup>	State <sup>1</sup>
Maine.....	Industry	Industry	State <sup>4</sup>
Maryland.....	State <sup>1</sup>	State <sup>1</sup>	State <sup>1</sup>
Massachusetts .....	State <sup>1</sup>	State <sup>1</sup>	State <sup>1</sup>
Michigan.....	State <sup>1</sup>	State <sup>1</sup>	State <sup>4</sup>
Minnesota.....	State <sup>1</sup>	State <sup>1</sup>	State <sup>1</sup>
Mississippi .....	Industry	State <sup>4</sup>	State <sup>4</sup>
Missouri.....	State <sup>2</sup>	State <sup>2</sup>	State <sup>2</sup>
Montana .....	State <sup>2</sup>	State <sup>2</sup>	State <sup>3</sup>
Nebraska .....	Industry	Industry	Industry
Nevada.....	Industry	Industry	Industry
New Hampshire.....	Industry	State <sup>3</sup>	State <sup>3</sup>
New Jersey.....	State <sup>1</sup>	State <sup>1</sup>	State <sup>1</sup>
New Mexico.....	State <sup>1</sup>	State <sup>1</sup>	State <sup>1</sup>
New York.....	State <sup>1</sup>	State <sup>1</sup>	State <sup>1</sup>
North Carolina .....	State <sup>2</sup>	State <sup>2</sup>	State <sup>4</sup>
North Dakota .....	State <sup>1</sup>	State <sup>1</sup>	State <sup>1</sup>

**Table 3.** Sources of alcoholic beverage sales or shipment data by State and beverage type, 2016. (Continued)

State	Beer	Wine	Spirits
Ohio.....	Industry	Industry	State <sup>3</sup>
Oklahoma.....	Industry	Industry	Industry
Oregon.....	State <sup>1</sup>	State <sup>1</sup>	State <sup>4</sup>
Pennsylvania.....	Industry	State <sup>3</sup>	State <sup>3</sup>
Rhode Island.....	State <sup>1</sup>	State <sup>1</sup>	State <sup>1</sup>
South Carolina.....	Industry	Industry	Industry
South Dakota.....	Industry	State <sup>1</sup>	State <sup>1</sup>
Tennessee.....	State <sup>2</sup>	State <sup>2</sup>	State <sup>2</sup>
Texas.....	State <sup>1</sup>	State <sup>1</sup>	State <sup>1</sup>
Utah.....	Industry	State <sup>1</sup>	State <sup>1</sup>
Vermont.....	Industry	State <sup>2</sup>	State <sup>4</sup>
Virginia.....	State <sup>1</sup>	State <sup>1</sup>	State <sup>1</sup>
Washington.....	Industry	Industry	State <sup>1</sup>
West Virginia.....	Industry	Industry	State <sup>4</sup>
Wisconsin.....	Industry	State <sup>1</sup>	State <sup>1</sup>
Wyoming.....	State <sup>1</sup>	State <sup>4</sup>	State <sup>4</sup>

Note: Industry shipment data are from the reports produced by the Beverage Information Group (2017a, b, c). State data are from each State's department of revenue, department of taxation, or alcoholic beverage commission, or the National Alcohol Beverage Control Association (NABCA).

<sup>1</sup> State monthly sales volume data.

<sup>2</sup> State monthly sales tax data.

<sup>3</sup> State annual sales volume data.

<sup>4</sup> NABCA annual sales volume data.

**Table 4.** Per capita ethanol consumption for States, census regions, and the United States, 1977–2016. (Gallons of ethanol, based on population ages 14 and older.)

State or other geographic area	Per capita consumption				U.S. decile for all beverages
	Beer	Wine	Spirits	All beverages	
<b>Alabama</b>					
2016.....	1.09	0.26	0.65	2.01	9
2015.....	1.11	0.26	0.64	2.01	9
2014.....	1.13	0.25	0.62	2.00	9
2013.....	1.14	0.25	0.60	1.99	9
2012.....	1.16	0.24	0.60	2.00	9
2011.....	1.16	0.24	0.59	1.98	9
2010.....	1.17	0.23	0.58	1.98	9
2009.....	1.19	0.22	0.57	1.98	9
2008.....	1.22	0.22	0.57	2.01	9
2007.....	1.23	0.22	0.55	2.00	9
2006.....	1.21	0.21	0.54	1.95	9
2005.....	1.18	0.20	0.53	1.91	9
2004.....	1.19	0.20	0.52	1.91	9
2003.....	1.19	0.19	0.52	1.90	9
2002.....	1.18	0.21	0.54	1.92	9
2001.....	1.16	0.17	0.53	1.86	9
2000.....	1.19	0.18	0.51	1.88	9
1999.....	1.18	0.17	0.51	1.87	9
1998.....	1.16	0.17	0.51	1.85	9
1997.....	1.14	0.16	0.52	1.82	9
1996.....	1.17	0.18	0.53	1.88	8
1995.....	1.14	0.16	0.53	1.82	9
1994.....	1.16	0.17	0.54	1.87	9
1993.....	1.14	0.17	0.56	1.86	9
1992.....	1.02	0.19	0.59	1.79	10
1991.....	1.00	0.17	0.59	1.76	10
1990.....	1.12	0.18	0.61	1.92	9
1989.....	1.12	0.17	0.61	1.90	9
1988.....	1.12	0.19	0.62	1.92	9
1987.....	1.11	0.18	0.62	1.91	9
1986.....	1.10	0.18	0.65	1.92	9
1985.....	1.07	0.17	0.67	1.92	9
1984.....	1.03	0.19	0.69	1.91	9
1983.....	1.01	0.17	0.72	1.90	10
1982.....	1.00	0.18	0.72	1.90	10
1981.....	1.00	0.19	0.73	1.91	10
1980.....	0.95	0.16	0.74	1.86	10
1979.....	0.96	0.12	0.82	1.90	10
1978.....	0.95	0.12	0.85	1.92	9
1977.....	0.97	0.12	0.82	1.92	9
<b>Alaska</b>					
2016.....	1.15	0.56	1.23	2.94	2
2015.....	1.11	0.53	1.20	2.84	2
2014.....	1.11	0.52	1.16	2.79	3
2013.....	1.07	0.52	1.17	2.75	3
2012.....	1.17	0.53	1.13	2.83	2
2011.....	1.15	0.54	1.17	2.86	2
2010.....	1.23	0.55	1.25	3.03	1
2009.....	1.32	0.54	1.16	3.02	1
2008.....	1.20	0.49	1.09	2.78	2
2007.....	1.13	0.44	0.96	2.53	4
2006.....	1.25	0.47	1.03	2.75	2

Decile values (1 = highest) apply only to State-level data. Numbers may not sum because of rounding.

**Table 4.** Per capita ethanol consumption for States, census regions, and the United States, 1977–2016. (Gallons of ethanol, based on population ages 14 and older.) (Continued)

State or other geographic area	Per capita consumption				U.S. decile for all beverages
	Beer	Wine	Spirits	All beverages	
2005.....	1.23	0.43	0.98	2.64	2
2004.....	1.31	0.44	0.95	2.71	2
2003.....	1.27	0.37	0.79	2.43	4
2002.....	1.35	0.45	1.19	2.99	1
2001.....	1.32	0.38	0.96	2.67	2
2000.....	1.37	0.37	0.94	2.68	2
1999.....	1.40	0.38	0.95	2.74	1
1998.....	1.39	0.37	0.95	2.71	2
1997.....	1.31	0.36	0.88	2.56	2
1996.....	1.31	0.38	0.94	2.63	2
1995.....	1.45	0.39	1.02	2.86	1
1994.....	1.53	0.40	1.10	3.03	1
1993.....	1.31	0.32	0.92	2.55	2
1992.....	1.53	0.41	1.08	3.02	1
1991.....	1.54	0.43	1.14	3.11	1
1990.....	1.62	0.46	1.25	3.33	1
1989.....	1.52	0.44	1.19	3.15	1
1988.....	1.54	0.47	1.19	3.21	1
1987.....	1.60	0.52	1.26	3.38	1
1986.....	1.65	0.55	1.25	3.45	1
1985.....	1.63	0.56	1.48	3.68	1
1984.....	1.67	0.56	1.50	3.72	1
1983.....	1.71	0.59	1.65	3.95	1
1982.....	1.69	0.54	1.68	3.92	1
1981.....	1.68	0.56	1.79	4.02	1
1980.....	1.54	0.50	1.68	3.72	1
1979.....	1.48	0.46	1.63	3.58	1
1978.....	1.39	0.45	1.67	3.51	1
1977.....	1.19	0.42	1.69	3.30	2
Arizona					
2016.....	1.14	0.40	0.78	2.31	6
2015.....	1.16	0.40	0.78	2.34	6
2014.....	1.18	0.40	0.79	2.37	5
2013.....	1.13	0.42	0.81	2.36	5
2012.....	1.14	0.45	0.84	2.43	5
2011.....	1.15	0.44	0.80	2.39	5
2010.....	1.23	0.41	0.76	2.39	5
2009.....	1.22	0.39	0.77	2.38	5
2008.....	1.30	0.41	0.77	2.48	5
2007.....	1.39	0.34	0.78	2.51	5
2006.....	1.34	0.38	0.79	2.51	4
2005.....	1.35	0.40	0.76	2.51	3
2004.....	1.40	0.34	0.71	2.44	4
2003.....	1.41	0.37	0.71	2.49	3
2002.....	1.46	0.33	0.69	2.48	3
2001.....	1.47	0.33	0.70	2.50	3
2000.....	1.48	0.31	0.71	2.50	3
1999.....	1.47	0.34	0.69	2.51	2
1998.....	1.44	0.33	0.68	2.45	2
1997.....	1.45	0.31	0.68	2.44	2
1996.....	1.52	0.33	0.73	2.58	2
1995.....	1.47	0.29	0.68	2.44	3
1994.....	1.52	0.29	0.70	2.50	2
1993.....	1.58	0.27	0.76	2.62	2

Decile values (1 = highest) apply only to State-level data. Numbers may not sum because of rounding.

**Table 4.** Per capita ethanol consumption for States, census regions, and the United States, 1977–2016. (Gallons of ethanol, based on population ages 14 and older.) (Continued)

State or other geographic area	Per capita consumption				U.S. decile for all beverages
	Beer	Wine	Spirits	All beverages	
1992.....	1.58	0.31	0.80	2.69	2
1991.....	1.58	0.35	0.78	2.71	2
1990.....	1.59	0.37	0.80	2.77	3
1989.....	1.63	0.35	0.83	2.81	2
1988.....	1.60	0.41	0.86	2.87	2
1987.....	1.64	0.45	0.84	2.93	2
1986.....	1.74	0.45	0.90	3.09	2
1985.....	1.66	0.45	0.99	3.11	2
1984.....	1.55	0.44	1.05	3.04	3
1983.....	1.60	0.43	0.99	3.02	3
1982.....	1.71	0.39	0.98	3.07	3
1981.....	1.76	0.42	1.00	3.18	3
1980.....	1.68	0.36	0.97	3.01	4
1979.....	1.71	0.36	1.07	3.15	3
1978.....	1.66	0.35	1.03	3.04	3
1977.....	1.60	0.32	0.99	2.92	3
Arkansas					
2016.....	0.93	0.22	0.65	1.80	10
2015.....	0.97	0.22	0.65	1.83	10
2014.....	0.96	0.21	0.62	1.79	10
2013.....	1.00	0.20	0.60	1.81	10
2012.....	1.00	0.20	0.60	1.81	10
2011.....	0.98	0.18	0.56	1.72	10
2010.....	1.02	0.19	0.57	1.77	10
2009.....	1.03	0.17	0.57	1.78	10
2008.....	1.05	0.17	0.55	1.77	10
2007.....	1.02	0.15	0.51	1.69	10
2006.....	1.05	0.16	0.54	1.75	10
2005.....	1.03	0.15	0.50	1.67	10
2004.....	1.04	0.15	0.49	1.68	10
2003.....	1.06	0.14	0.56	1.77	10
2002.....	1.09	0.14	0.53	1.75	10
2001.....	1.08	0.13	0.53	1.74	10
2000.....	1.09	0.12	0.53	1.74	10
1999.....	1.09	0.12	0.54	1.75	10
1998.....	1.10	0.11	0.51	1.73	10
1997.....	1.07	0.12	0.52	1.71	10
1996.....	1.07	0.12	0.53	1.72	10
1995.....	1.06	0.11	0.51	1.68	10
1994.....	1.06	0.13	0.46	1.65	10
1993.....	1.10	0.11	0.58	1.79	9
1992.....	1.13	0.12	0.65	1.90	9
1991.....	1.12	0.11	0.58	1.81	9
1990.....	1.12	0.13	0.61	1.86	9
1989.....	1.10	0.13	0.58	1.82	9
1988.....	1.09	0.14	0.54	1.78	10
1987.....	1.09	0.11	0.53	1.74	10
1986.....	1.08	0.09	0.49	1.65	10
1985.....	1.04	0.13	0.59	1.77	10
1984.....	1.03	0.12	0.64	1.80	10
1983.....	1.03	0.13	0.63	1.79	10
1982.....	1.03	0.12	0.63	1.78	10
1981.....	1.06	0.12	0.68	1.86	10
1980.....	1.00	0.12	0.68	1.81	10

Decile values (1 = highest) apply only to State-level data. Numbers may not sum because of rounding.

**Table 4.** Per capita ethanol consumption for States, census regions, and the United States, 1977–2016. (Gallons of ethanol, based on population ages 14 and older.) (Continued)

State or other geographic area	Per capita consumption				U.S. decile for all beverages
	Beer	Wine	Spirits	All beverages	
1979.....	0.90	0.09	0.55	1.54	10
1978.....	0.95	0.11	0.71	1.76	10
1977.....	0.89	0.10	0.61	1.61	10
California					
2016.....	0.96	0.59	0.78	2.33	6
2015.....	0.99	0.53	0.75	2.28	6
2014.....	1.00	0.60	0.73	2.32	6
2013.....	0.98	0.60	0.75	2.33	6
2012.....	0.98	0.63	0.74	2.35	6
2011.....	0.95	0.58	0.72	2.25	7
2010.....	0.97	0.49	0.71	2.16	8
2009.....	1.01	0.57	0.70	2.28	7
2008.....	1.05	0.55	0.70	2.30	7
2007.....	1.06	0.54	0.70	2.30	6
2006.....	1.02	0.56	0.70	2.29	6
2005.....	1.03	0.54	0.69	2.26	6
2004.....	1.07	0.52	0.67	2.25	6
2003.....	1.07	0.51	0.65	2.23	6
2002.....	1.08	0.49	0.64	2.21	6
2001.....	1.09	0.48	0.63	2.20	6
2000.....	1.12	0.48	0.64	2.24	6
1999.....	1.12	0.48	0.62	2.22	6
1998.....	1.11	0.49	0.61	2.21	6
1997.....	1.14	0.52	0.62	2.28	5
1996.....	1.13	0.50	0.64	2.27	5
1995.....	1.15	0.46	0.63	2.24	5
1994.....	1.09	0.47	0.68	2.24	5
1993.....	1.17	0.48	0.69	2.35	4
1992.....	1.28	0.51	0.75	2.54	3
1991.....	1.22	0.49	0.75	2.46	4
1990.....	1.32	0.59	0.87	2.78	2
1989.....	1.29	0.60	0.85	2.75	3
1988.....	1.32	0.67	0.88	2.86	3
1987.....	1.35	0.73	0.92	3.00	2
1986.....	1.35	0.78	0.95	3.08	2
1985.....	1.32	0.78	1.02	3.11	2
1984.....	1.37	0.73	1.06	3.16	2
1983.....	1.36	0.74	1.10	3.21	2
1982.....	1.37	0.72	1.13	3.22	3
1981.....	1.43	0.72	1.20	3.35	2
1980.....	1.41	0.71	1.24	3.36	2
1979.....	1.39	0.68	1.25	3.32	2
1978.....	1.33	0.67	1.29	3.28	2
1977.....	1.29	0.65	1.25	3.19	2
Colorado					
2016.....	1.14	0.51	1.16	2.81	3
2015.....	1.12	0.51	1.14	2.77	3
2014.....	1.14	0.51	1.11	2.77	3
2013.....	1.20	0.50	1.11	2.81	3
2012.....	1.15	0.52	1.08	2.76	3
2011.....	1.20	0.49	1.04	2.73	3
2010.....	1.22	0.48	1.01	2.71	2
2009.....	1.23	0.46	1.01	2.70	3

Decile values (1 = highest) apply only to State-level data. Numbers may not sum because of rounding.

**Table 4.** Per capita ethanol consumption for States, census regions, and the United States, 1977–2016. (Gallons of ethanol, based on population ages 14 and older.) (Continued)

State or other geographic area	Per capita consumption				U.S. decile for all beverages
	Beer	Wine	Spirits	All beverages	
2008.....	1.28	0.47	1.02	2.77	3
2007.....	1.30	0.47	1.01	2.78	2
2006.....	1.29	0.45	0.98	2.72	2
2005.....	1.31	0.42	0.99	2.72	2
2004.....	1.30	0.43	0.95	2.68	2
2003.....	1.33	0.40	0.87	2.60	2
2002.....	1.35	0.39	0.90	2.64	2
2001.....	1.42	0.41	0.96	2.78	1
2000.....	1.35	0.37	0.89	2.60	2
1999.....	1.33	0.37	0.75	2.45	3
1998.....	1.33	0.37	0.83	2.53	2
1997.....	1.30	0.37	0.81	2.48	2
1996.....	1.36	0.37	0.84	2.57	2
1995.....	1.34	0.35	0.78	2.47	2
1994.....	1.36	0.35	0.84	2.55	2
1993.....	1.40	0.36	0.86	2.63	2
1992.....	1.34	0.36	0.81	2.52	3
1991.....	1.39	0.35	0.87	2.61	3
1990.....	1.35	0.29	0.75	2.39	6
1989.....	1.42	0.38	0.85	2.64	3
1988.....	1.44	0.40	0.92	2.76	3
1987.....	1.45	0.45	0.94	2.84	3
1986.....	1.49	0.47	0.95	2.90	3
1985.....	1.48	0.50	1.18	3.17	2
1984.....	1.51	0.46	1.12	3.10	2
1983.....	1.57	0.46	1.12	3.15	3
1982.....	1.63	0.46	1.17	3.26	2
1981.....	1.62	0.44	1.26	3.32	2
1980.....	1.56	0.46	1.31	3.33	2
1979.....	1.63	0.46	1.33	3.42	2
1978.....	1.60	0.46	1.39	3.46	2
1977.....	1.40	0.36	1.19	2.95	3
Connecticut					
2016.....	0.85	0.62	0.98	2.45	5
2015.....	0.85	0.61	0.95	2.41	5
2014.....	0.84	0.60	0.92	2.37	6
2013.....	0.85	0.61	0.91	2.37	5
2012.....	0.86	0.61	0.91	2.39	6
2011.....	0.86	0.62	0.88	2.35	6
2010.....	0.88	0.60	0.87	2.35	5
2009.....	0.88	0.59	0.85	2.31	6
2008.....	0.93	0.58	0.85	2.36	6
2007.....	0.92	0.57	0.84	2.33	6
2006.....	0.93	0.56	0.81	2.30	6
2005.....	0.90	0.54	0.79	2.23	6
2004.....	0.93	0.53	0.79	2.25	6
2003.....	0.93	0.52	0.78	2.23	6
2002.....	0.95	0.50	0.75	2.21	6
2001.....	0.95	0.50	0.74	2.19	6
2000.....	0.94	0.49	0.74	2.18	7
1999.....	0.94	0.49	0.75	2.18	6
1998.....	0.96	0.49	0.76	2.21	5
1997.....	0.95	0.48	0.74	2.17	6
1996.....	0.91	0.46	0.72	2.09	7

Decile values (1 = highest) apply only to State-level data. Numbers may not sum because of rounding.



**Table 4.** Per capita ethanol consumption for States, census regions, and the United States, 1977–2016. (Gallons of ethanol, based on population ages 14 and older.) (Continued)

State or other geographic area	Per capita consumption				U.S. decile for all beverages
	Beer	Wine	Spirits	All beverages	
1995.....	0.96	0.46	0.78	2.20	5
1994.....	0.99	0.43	0.78	2.20	6
1993.....	0.96	0.44	0.80	2.20	6
1992.....	1.01	0.45	0.83	2.30	6
1991.....	1.03	0.43	0.84	2.29	6
1990.....	1.09	0.45	0.92	2.46	6
1989.....	1.07	0.46	0.96	2.50	4
1988.....	1.12	0.50	1.05	2.67	4
1987.....	1.14	0.51	1.10	2.75	3
1986.....	1.11	0.51	1.14	2.76	4
1985.....	1.12	0.50	1.19	2.81	4
1984.....	1.10	0.49	1.19	2.78	5
1983.....	1.10	0.49	1.22	2.80	5
1982.....	1.04	0.49	1.21	2.74	6
1981.....	1.05	0.44	1.18	2.67	6
1980.....	1.06	0.43	1.20	2.69	6
1979.....	1.14	0.40	1.21	2.76	5
1978.....	1.09	0.38	1.21	2.69	6
1977.....	1.06	0.35	1.23	2.64	6
Delaware					
2016.....	1.20	0.73	1.79	3.72	1
2015.....	1.18	0.72	1.74	3.65	1
2014.....	1.21	0.72	1.66	3.59	1
2013.....	1.25	0.72	1.63	3.59	1
2012.....	1.32	0.69	1.58	3.59	1
2011.....	1.34	0.69	1.52	3.55	1
2010.....	1.36	0.66	1.36	3.38	1
2009.....	1.32	0.65	1.34	3.31	1
2008.....	1.35	0.57	1.23	3.15	1
2007.....	1.38	0.59	1.23	3.19	1
2006.....	1.41	0.59	1.26	3.26	1
2005.....	1.42	0.58	1.24	3.25	1
2004.....	1.42	0.57	1.28	3.27	1
2003.....	1.38	0.57	1.18	3.12	1
2002.....	1.39	0.52	1.10	3.01	1
2001.....	1.39	0.49	1.07	2.94	1
2000.....	1.36	0.48	1.05	2.89	1
1999.....	1.40	0.48	1.03	2.90	1
1998.....	1.41	0.47	1.03	2.91	1
1997.....	1.37	0.46	0.99	2.81	1
1996.....	1.39	0.45	0.94	2.78	1
1995.....	1.30	0.40	0.92	2.62	2
1994.....	1.43	0.38	0.95	2.76	1
1993.....	1.46	0.35	0.95	2.76	1
1992.....	1.40	0.36	0.97	2.73	2
1991.....	1.40	0.35	0.95	2.70	2
1990.....	1.44	0.37	1.14	2.95	2
1989.....	1.43	0.39	1.15	2.96	2
1988.....	1.46	0.41	1.21	3.08	1
1987.....	1.46	0.43	1.23	3.12	2
1986.....	1.46	0.45	1.25	3.16	2
1985.....	1.48	0.41	1.31	3.20	2
1984.....	1.52	0.39	1.29	3.20	2
1983.....	1.55	0.35	1.35	3.25	2

Decile values (1 = highest) apply only to State-level data. Numbers may not sum because of rounding.

**Table 4.** Per capita ethanol consumption for States, census regions, and the United States, 1977–2016. (Gallons of ethanol, based on population ages 14 and older.) (Continued)

State or other geographic area	Per capita consumption				U.S. decile for all beverages
	Beer	Wine	Spirits	All beverages	
1982.....	1.54	0.34	1.38	3.26	2
1981.....	1.52	0.33	1.40	3.24	3
1980.....	1.44	0.29	1.37	3.11	3
1979.....	1.35	0.26	1.31	2.92	4
1978.....	1.31	0.24	1.30	2.85	4
1977.....	1.30	0.23	1.33	2.86	4
District of Columbia					
2016.....	1.13	1.03	1.69	3.85	1
2015.....	1.15	1.02	1.68	3.85	1
2014.....	1.16	1.01	1.68	3.84	1
2013.....	1.17	1.01	1.66	3.84	1
2012.....	1.18	1.01	1.65	3.85	1
2011.....	1.19	1.01	1.62	3.82	1
2010.....	1.22	1.00	1.61	3.83	1
2009.....	1.26	1.00	1.62	3.88	1
2008.....	1.35	1.01	1.64	4.00	1
2007.....	1.37	1.00	1.63	4.00	1
2006.....	1.38	0.96	1.60	3.94	1
2005.....	1.40	0.93	1.56	3.90	1
2004.....	1.38	0.91	1.52	3.80	1
2003.....	1.38	0.88	1.51	3.76	1
2002.....	1.36	0.83	1.47	3.66	1
2001.....	1.36	0.79	1.46	3.61	1
2000.....	1.39	0.81	1.45	3.65	1
1999.....	1.38	0.78	1.36	3.52	1
1998.....	1.37	0.78	1.57	3.73	1
1997.....	1.42	0.80	1.61	3.83	1
1996.....	1.34	0.87	1.47	3.67	1
1995.....	1.49	0.77	1.52	3.79	1
1994.....	1.50	0.74	1.52	3.76	1
1993.....	1.51	0.73	1.54	3.78	1
1992.....	1.61	0.70	1.74	4.05	1
1991.....	1.42	0.61	1.85	3.89	1
1990.....	1.42	0.76	1.96	4.14	1
1989.....	1.39	0.82	1.72	3.92	1
1988.....	1.38	0.93	1.90	4.22	1
1987.....	1.41	0.95	2.26	4.62	1
1986.....	1.45	1.00	2.09	4.54	1
1985.....	1.44	1.00	2.35	4.80	1
1984.....	1.51	1.07	2.59	5.17	1
1983.....	1.51	1.05	2.71	5.27	1
1982.....	1.46	0.99	2.88	5.33	1
1981.....	1.48	1.05	2.89	5.42	1
1980.....	1.49	0.99	2.94	5.41	1
1979.....	1.42	0.96	2.92	5.30	1
1978.....	1.38	0.91	3.04	5.33	1
1977.....	1.35	0.86	3.16	5.37	1
Florida					
2016.....	1.09	0.53	1.03	2.65	4
2015.....	1.11	0.51	0.98	2.60	4
2014.....	1.09	0.51	0.98	2.59	4
2013.....	1.28	0.49	0.95	2.72	3
2012.....	1.26	0.51	0.95	2.72	3

Decile values (1 = highest) apply only to State-level data. Numbers may not sum because of rounding.

**Table 4.** Per capita ethanol consumption for States, census regions, and the United States, 1977–2016. (Gallons of ethanol, based on population ages 14 and older.) (Continued)

State or other geographic area	Per capita consumption				U.S. decile for all beverages
	Beer	Wine	Spirits	All beverages	
2011.....	1.13	0.49	0.93	2.54	4
2010.....	1.12	0.47	0.91	2.50	4
2009.....	1.19	0.48	0.91	2.58	4
2008.....	1.24	0.48	0.89	2.61	3
2007.....	1.28	0.48	0.92	2.68	3
2006.....	1.32	0.47	0.91	2.70	3
2005.....	1.33	0.46	0.91	2.70	2
2004.....	1.34	0.46	0.88	2.68	2
2003.....	1.31	0.44	0.86	2.61	2
2002.....	1.32	0.43	0.84	2.58	2
2001.....	1.32	0.40	0.82	2.54	2
2000.....	1.32	0.41	0.83	2.56	2
1999.....	1.33	0.40	0.80	2.53	2
1998.....	1.33	0.38	0.79	2.50	2
1997.....	1.36	0.37	0.80	2.53	2
1996.....	1.36	0.37	0.81	2.54	2
1995.....	1.34	0.35	0.82	2.50	2
1994.....	1.40	0.33	0.87	2.60	2
1993.....	1.44	0.33	0.92	2.68	2
1992.....	1.45	0.34	0.96	2.75	1
1991.....	1.43	0.34	0.92	2.69	2
1990.....	1.54	0.39	1.04	2.96	2
1989.....	1.51	0.39	1.00	2.89	2
1988.....	1.50	0.41	1.00	2.91	2
1987.....	1.50	0.42	1.03	2.95	2
1986.....	1.50	0.41	1.05	2.96	2
1985.....	1.47	0.41	1.16	3.04	3
1984.....	1.46	0.40	1.23	3.09	2
1983.....	1.55	0.39	1.22	3.16	2
1982.....	1.54	0.40	1.32	3.26	2
1981.....	1.54	0.39	1.37	3.30	3
1980.....	1.40	0.37	1.41	3.18	3
1979.....	1.38	0.34	1.41	3.14	3
1978.....	1.34	0.32	1.40	3.07	3
1977.....	1.27	0.31	1.40	2.99	3
Georgia					
2016.....	0.99	0.25	0.69	1.94	9
2015.....	1.01	0.25	0.68	1.94	9
2014.....	1.02	0.25	0.69	1.96	9
2013.....	1.03	0.25	0.69	1.97	9
2012.....	1.05	0.25	0.68	1.98	9
2011.....	1.06	0.25	0.67	1.98	9
2010.....	1.08	0.25	0.65	1.98	9
2009.....	1.11	0.25	0.65	2.01	9
2008.....	1.16	0.25	0.65	2.06	8
2007.....	1.19	0.26	0.65	2.10	8
2006.....	1.19	0.26	0.65	2.10	8
2005.....	1.17	0.26	0.64	2.07	8
2004.....	1.19	0.27	0.65	2.11	8
2003.....	1.20	0.26	0.66	2.13	7
2002.....	1.21	0.26	0.66	2.13	7
2001.....	1.20	0.25	0.65	2.11	7
2000.....	1.21	0.25	0.69	2.16	7

Decile values (1 = highest) apply only to State-level data. Numbers may not sum because of rounding.

**Table 4.** Per capita ethanol consumption for States, census regions, and the United States, 1977–2016. (Gallons of ethanol, based on population ages 14 and older.) (Continued)

State or other geographic area	Per capita consumption				U.S. decile for all beverages
	Beer	Wine	Spirits	All beverages	
1999.....	1.23	0.25	0.70	2.18	6
1998.....	1.22	0.23	0.70	2.15	6
1997.....	1.20	0.23	0.70	2.13	6
1996.....	1.24	0.24	0.71	2.18	6
1995.....	1.21	0.21	0.70	2.12	6
1994.....	1.17	0.21	0.77	2.14	7
1993.....	1.23	0.20	0.77	2.20	6
1992.....	1.22	0.21	0.79	2.23	7
1991.....	1.16	0.22	0.78	2.17	7
1990.....	1.22	0.23	0.86	2.31	7
1989.....	1.18	0.24	0.94	2.36	6
1988.....	1.21	0.26	0.92	2.39	7
1987.....	1.21	0.27	1.00	2.48	6
1986.....	1.21	0.27	0.94	2.43	7
1985.....	1.17	0.25	1.01	2.44	7
1984.....	1.18	0.24	1.06	2.48	7
1983.....	1.14	0.22	1.06	2.42	7
1982.....	1.12	0.21	1.04	2.36	8
1981.....	1.10	0.18	1.09	2.38	8
1980.....	1.06	0.19	1.08	2.33	8
1979.....	1.11	0.18	1.16	2.44	7
1978.....	1.09	0.18	1.21	2.48	7
1977.....	1.03	0.15	1.19	2.37	7
Hawaii					
2016.....	1.29	0.57	0.77	2.63	4
2015.....	1.28	0.56	0.77	2.60	4
2014.....	1.27	0.54	0.77	2.59	4
2013.....	1.25	0.54	0.77	2.56	4
2012.....	1.26	0.53	0.75	2.54	5
2011.....	1.25	0.53	0.73	2.52	4
2010.....	1.25	0.52	0.71	2.48	4
2009.....	1.27	0.51	0.71	2.49	4
2008.....	1.33	0.51	0.72	2.56	4
2007.....	1.30	0.48	0.77	2.55	4
2006.....	1.28	0.47	0.77	2.52	4
2005.....	1.30	0.45	0.72	2.47	4
2004.....	1.38	0.43	0.70	2.50	3
2003.....	1.30	0.42	0.66	2.38	5
2002.....	1.27	0.39	0.62	2.28	5
2001.....	1.30	0.38	0.60	2.28	5
2000.....	1.33	0.39	0.60	2.32	4
1999.....	1.31	0.39	0.56	2.26	5
1998.....	1.32	0.37	0.54	2.22	5
1997.....	1.38	0.40	0.56	2.33	4
1996.....	1.40	0.36	0.58	2.34	3
1995.....	1.41	0.34	0.57	2.32	4
1994.....	1.46	0.38	0.62	2.46	3
1993.....	1.49	0.37	0.65	2.51	3
1992.....	1.55	0.39	0.69	2.63	2
1991.....	1.57	0.40	0.70	2.67	2
1990.....	1.64	0.40	0.79	2.84	2
1989.....	1.56	0.43	0.80	2.79	2
1988.....	1.64	0.45	0.80	2.89	2
1987.....	1.59	0.41	0.77	2.76	3

Decile values (1 = highest) apply only to State-level data. Numbers may not sum because of rounding.

**Table 4.** Per capita ethanol consumption for States, census regions, and the United States, 1977–2016. (Gallons of ethanol, based on population ages 14 and older.) (Continued)

State or other geographic area	Per capita consumption				U.S. decile for all beverages
	Beer	Wine	Spirits	All beverages	
1986.....	1.61	0.44	0.86	2.91	3
1985.....	1.61	0.42	0.88	2.91	3
1984.....	1.66	0.41	0.92	2.99	3
1983.....	1.89	0.44	1.13	3.45	1
1982.....	1.80	0.48	1.14	3.41	1
1981.....	1.74	0.44	1.16	3.34	2
1980.....	1.64	0.46	1.20	3.30	2
1979.....	1.51	0.42	1.21	3.14	3
1978.....	1.33	0.44	1.25	3.02	3
1977.....	1.55	0.35	1.21	3.11	2
Idaho					
2016.....	0.92	1.19	0.81	2.92	2
2015.....	0.93	1.14	0.79	2.87	2
2014.....	0.93	1.12	0.77	2.82	2
2013.....	0.96	1.08	0.77	2.81	2
2012.....	0.98	1.02	0.77	2.77	2
2011.....	1.00	0.92	0.73	2.65	3
2010.....	1.06	0.90	0.72	2.68	3
2009.....	1.05	0.91	0.70	2.67	3
2008.....	1.15	0.81	0.69	2.64	3
2007.....	1.17	0.73	0.67	2.58	4
2006.....	1.14	0.74	0.65	2.53	4
2005.....	1.11	0.74	0.61	2.45	4
2004.....	1.14	0.72	0.57	2.43	4
2003.....	1.15	0.65	0.55	2.35	5
2002.....	1.16	0.64	0.53	2.33	4
2001.....	1.14	0.63	0.53	2.30	5
2000.....	1.13	0.65	0.52	2.30	5
1999.....	1.09	0.68	0.52	2.29	4
1998.....	1.15	0.33	0.51	1.99	7
1997.....	1.11	0.32	0.52	1.95	8
1996.....	1.13	0.30	0.52	1.96	8
1995.....	1.18	0.30	0.54	2.01	7
1994.....	1.24	0.35	0.53	2.12	7
1993.....	1.26	0.29	0.55	2.11	7
1992.....	1.32	0.31	0.57	2.20	7
1991.....	1.31	0.32	0.56	2.19	7
1990.....	1.36	0.33	0.58	2.27	7
1989.....	1.27	0.31	0.57	2.16	8
1988.....	1.28	0.37	0.59	2.24	7
1987.....	1.33	0.39	0.59	2.31	7
1986.....	1.36	0.39	0.62	2.37	7
1985.....	1.36	0.36	0.71	2.43	7
1984.....	1.41	0.31	0.72	2.45	7
1983.....	1.45	0.30	0.77	2.52	7
1982.....	1.45	0.30	0.81	2.57	7
1981.....	1.54	0.33	0.83	2.69	6
1980.....	1.53	0.30	0.77	2.59	7
1979.....	1.51	0.27	0.82	2.60	6
1978.....	1.46	0.25	0.78	2.50	7
1977.....	1.47	0.22	0.78	2.47	7
Illinois					
2016.....	1.12	0.43	0.77	2.32	6

Decile values (1 = highest) apply only to State-level data. Numbers may not sum because of rounding.

**Table 4.** Per capita ethanol consumption for States, census regions, and the United States, 1977–2016. (Gallons of ethanol, based on population ages 14 and older.) (Continued)

State or other geographic area	Per capita consumption				U.S. decile for all beverages
	Beer	Wine	Spirits	All beverages	
2015.....	1.13	0.43	0.80	2.36	5
2014.....	1.12	0.42	0.78	2.32	6
2013.....	1.13	0.42	0.78	2.33	6
2012.....	1.15	0.43	0.77	2.36	6
2011.....	1.19	0.41	0.75	2.35	6
2010.....	1.22	0.40	0.74	2.35	5
2009.....	1.24	0.39	0.73	2.36	5
2008.....	1.23	0.38	0.74	2.34	6
2007.....	1.24	0.41	0.74	2.38	6
2006.....	1.24	0.37	0.74	2.35	6
2005.....	1.23	0.34	0.71	2.29	6
2004.....	1.24	0.32	0.67	2.22	6
2003.....	1.26	0.35	0.74	2.36	5
2002.....	1.28	0.33	0.65	2.26	5
2001.....	1.27	0.32	0.68	2.28	5
2000.....	1.28	0.32	0.63	2.24	6
1999.....	1.29	0.33	0.66	2.27	5
1998.....	1.27	0.34	0.64	2.25	4
1997.....	1.26	0.35	0.65	2.26	5
1996.....	1.27	0.35	0.68	2.30	4
1995.....	1.30	0.33	0.66	2.29	4
1994.....	1.32	0.34	0.69	2.35	4
1993.....	1.32	0.34	0.72	2.38	4
1992.....	1.34	0.35	0.74	2.43	4
1991.....	1.38	0.34	0.76	2.48	4
1990.....	1.43	0.36	0.82	2.62	4
1989.....	1.42	0.36	0.85	2.63	3
1988.....	1.45	0.38	0.87	2.70	3
1987.....	1.43	0.39	0.88	2.71	4
1986.....	1.42	0.39	0.91	2.72	5
1985.....	1.39	0.38	0.99	2.76	5
1984.....	1.41	0.37	1.02	2.80	4
1983.....	1.43	0.35	1.03	2.82	4
1982.....	1.42	0.35	1.07	2.84	5
1981.....	1.44	0.35	1.12	2.91	5
1980.....	1.42	0.33	1.23	2.99	4
1979.....	1.42	0.32	1.15	2.89	4
1978.....	1.35	0.31	1.17	2.83	4
1977.....	1.32	0.30	1.20	2.82	4
Indiana					
2016.....	0.98	0.29	0.89	2.17	8
2015.....	0.98	0.28	0.88	2.14	8
2014.....	0.98	0.27	0.80	2.05	8
2013.....	1.00	0.28	0.81	2.09	8
2012.....	1.02	0.28	0.79	2.08	8
2011.....	1.02	0.27	0.73	2.02	8
2010.....	1.03	0.26	0.74	2.03	8
2009.....	1.08	0.25	0.72	2.05	8
2008.....	1.10	0.24	0.73	2.08	8
2007.....	1.13	0.24	0.72	2.09	8
2006.....	1.09	0.25	0.66	2.00	9
2005.....	1.11	0.22	0.68	2.01	8
2004.....	1.14	0.22	0.65	2.01	8
2003.....	1.11	0.21	0.64	1.96	9

Decile values (1 = highest) apply only to State-level data. Numbers may not sum because of rounding.

**Table 4.** Per capita ethanol consumption for States, census regions, and the United States, 1977–2016. (Gallons of ethanol, based on population ages 14 and older.) (Continued)

State or other geographic area	Per capita consumption				U.S. decile for all beverages
	Beer	Wine	Spirits	All beverages	
2002.....	1.13	0.20	0.60	1.93	9
2001.....	1.15	0.19	0.62	1.96	8
2000.....	1.16	0.20	0.61	1.98	8
1999.....	1.16	0.19	0.59	1.94	8
1998.....	1.14	0.19	0.58	1.91	8
1997.....	1.09	0.18	0.59	1.85	8
1996.....	1.09	0.20	0.57	1.86	9
1995.....	1.14	0.20	0.58	1.92	8
1994.....	1.15	0.20	0.59	1.94	8
1993.....	1.15	0.19	0.64	1.98	8
1992.....	1.16	0.20	0.58	1.95	9
1991.....	1.22	0.19	0.60	2.00	9
1990.....	1.26	0.20	0.63	2.09	8
1989.....	1.23	0.20	0.64	2.07	8
1988.....	1.25	0.21	0.67	2.13	8
1987.....	1.26	0.23	0.67	2.16	8
1986.....	1.26	0.23	0.67	2.17	8
1985.....	1.26	0.22	0.73	2.20	8
1984.....	1.27	0.21	0.73	2.21	8
1983.....	1.28	0.19	0.73	2.20	8
1982.....	1.29	0.19	0.76	2.24	8
1981.....	1.29	0.18	0.78	2.24	8
1980.....	1.26	0.17	0.77	2.21	8
1979.....	1.21	0.15	0.78	2.15	8
1978.....	1.18	0.15	0.78	2.12	8
1977.....	1.13	0.14	0.77	2.03	8
Iowa					
2016.....	1.30	0.23	0.87	2.40	5
2015.....	1.31	0.22	0.83	2.36	5
2014.....	1.34	0.21	0.81	2.37	6
2013.....	1.33	0.22	0.79	2.34	6
2012.....	1.36	0.23	0.81	2.40	5
2011.....	1.38	0.21	0.78	2.37	5
2010.....	1.39	0.18	0.73	2.30	6
2009.....	1.42	0.18	0.72	2.31	6
2008.....	1.43	0.17	0.70	2.30	6
2007.....	1.41	0.17	0.67	2.25	7
2006.....	1.39	0.16	0.65	2.20	7
2005.....	1.40	0.16	0.61	2.16	7
2004.....	1.39	0.16	0.57	2.12	7
2003.....	1.38	0.15	0.54	2.07	8
2002.....	1.38	0.14	0.51	2.04	8
2001.....	1.36	0.13	0.50	1.99	8
2000.....	1.35	0.13	0.50	1.98	8
1999.....	1.34	0.13	0.48	1.95	8
1998.....	1.31	0.12	0.46	1.90	8
1997.....	1.28	0.12	0.45	1.85	9
1996.....	1.28	0.12	0.45	1.85	9
1995.....	1.26	0.11	0.44	1.80	9
1994.....	1.30	0.10	0.44	1.84	9
1993.....	1.28	0.11	0.48	1.87	9
1992.....	1.31	0.13	0.46	1.90	9
1991.....	1.32	0.16	0.52	2.01	8

Decile values (1 = highest) apply only to State-level data. Numbers may not sum because of rounding.

**Table 4.** Per capita ethanol consumption for States, census regions, and the United States, 1977–2016. (Gallons of ethanol, based on population ages 14 and older.) (Continued)

State or other geographic area	Per capita consumption				U.S. decile for all beverages
	Beer	Wine	Spirits	All beverages	
1990.....	1.34	0.18	0.54	2.06	9
1989.....	1.30	0.19	0.52	2.01	9
1988.....	1.32	0.20	0.53	2.06	9
1987.....	1.34	0.22	0.59	2.14	8
1986.....	1.35	0.20	0.54	2.09	9
1985.....	1.33	0.14	0.58	2.06	9
1984.....	1.39	0.12	0.62	2.13	9
1983.....	1.40	0.13	0.65	2.18	8
1982.....	1.40	0.13	0.65	2.19	8
1981.....	1.44	0.13	0.69	2.26	8
1980.....	1.41	0.13	0.71	2.25	8
1979.....	1.40	0.11	0.71	2.22	8
1978.....	1.38	0.11	0.74	2.23	8
1977.....	1.33	0.10	0.74	2.17	8
Kansas					
2016.....	1.02	0.14	0.75	1.92	10
2015.....	1.03	0.14	0.74	1.91	10
2014.....	1.04	0.14	0.75	1.93	9
2013.....	0.99	0.14	0.76	1.88	10
2012.....	1.09	0.14	0.72	1.95	9
2011.....	1.07	0.14	0.69	1.90	10
2010.....	1.13	0.14	0.68	1.95	9
2009.....	1.18	0.14	0.67	1.99	9
2008.....	1.22	0.14	0.65	2.01	9
2007.....	1.17	0.15	0.64	1.96	9
2006.....	1.14	0.18	0.61	1.94	9
2005.....	1.14	0.18	0.57	1.89	9
2004.....	1.14	0.16	0.56	1.86	9
2003.....	1.16	0.17	0.56	1.89	10
2002.....	1.19	0.15	0.54	1.88	9
2001.....	1.12	0.15	0.53	1.80	9
2000.....	1.13	0.15	0.53	1.82	9
1999.....	1.12	0.15	0.54	1.81	9
1998.....	1.08	0.13	0.54	1.76	9
1997.....	1.07	0.12	0.48	1.67	10
1996.....	1.04	0.12	0.49	1.65	10
1995.....	1.04	0.12	0.50	1.66	10
1994.....	1.12	0.13	0.48	1.73	10
1993.....	1.09	0.14	0.52	1.75	10
1992.....	1.09	0.14	0.55	1.78	10
1991.....	1.15	0.14	0.57	1.85	9
1990.....	1.13	0.13	0.53	1.79	10
1989.....	1.13	0.13	0.55	1.81	10
1988.....	1.13	0.22	0.57	1.92	9
1987.....	1.14	0.17	0.57	1.88	9
1986.....	1.14	0.17	0.60	1.91	9
1985.....	1.18	0.15	0.64	1.97	9
1984.....	1.19	0.14	0.63	1.96	9
1983.....	1.20	0.13	0.64	1.97	9
1982.....	1.22	0.13	0.67	2.03	9
1981.....	1.23	0.12	0.70	2.05	9
1980.....	1.22	0.11	0.61	1.95	9
1979.....	1.19	0.12	0.74	2.04	9

Decile values (1 = highest) apply only to State-level data. Numbers may not sum because of rounding.



**Table 4.** Per capita ethanol consumption for States, census regions, and the United States, 1977–2016. (Gallons of ethanol, based on population ages 14 and older.) (Continued)

State or other geographic area	Per capita consumption				U.S. decile for all beverages
	Beer	Wine	Spirits	All beverages	
1978.....	1.15	0.12	0.65	1.91	10
1977.....	1.14	0.10	0.65	1.90	10
Kentucky					
2016.....	0.96	0.22	0.79	1.98	9
2015.....	0.99	0.22	0.76	1.97	9
2014.....	0.94	0.21	0.72	1.88	10
2013.....	0.95	0.20	0.70	1.85	10
2012.....	0.97	0.20	0.70	1.87	10
2011.....	0.94	0.19	0.66	1.79	10
2010.....	1.00	0.18	0.66	1.83	10
2009.....	1.02	0.18	0.65	1.85	10
2008.....	1.03	0.17	0.65	1.85	10
2007.....	1.04	0.17	0.63	1.85	10
2006.....	1.04	0.17	0.62	1.82	10
2005.....	1.04	0.14	0.61	1.80	10
2004.....	1.07	0.17	0.57	1.81	10
2003.....	1.03	0.15	0.57	1.75	10
2002.....	1.08	0.14	0.54	1.77	10
2001.....	1.04	0.12	0.46	1.63	10
2000.....	1.07	0.14	0.53	1.74	10
1999.....	1.07	0.13	0.54	1.74	10
1998.....	1.08	0.13	0.53	1.74	10
1997.....	1.07	0.13	0.53	1.72	9
1996.....	1.09	0.13	0.54	1.76	9
1995.....	1.06	0.11	0.54	1.71	9
1994.....	1.08	0.11	0.55	1.73	10
1993.....	1.08	0.10	0.55	1.73	10
1992.....	1.04	0.11	0.56	1.71	10
1991.....	1.11	0.11	0.56	1.78	10
1990.....	1.12	0.11	0.60	1.83	10
1989.....	1.09	0.12	0.57	1.79	10
1988.....	1.10	0.12	0.60	1.82	10
1987.....	1.04	0.14	0.60	1.78	10
1986.....	1.10	0.14	0.63	1.86	10
1985.....	1.08	0.14	0.66	1.88	10
1984.....	1.06	0.13	0.68	1.87	10
1983.....	1.13	0.12	0.70	1.95	9
1982.....	1.14	0.12	0.72	1.99	9
1981.....	1.13	0.10	0.75	1.99	9
1980.....	1.08	0.10	0.73	1.91	10
1979.....	1.07	0.09	0.75	1.91	9
1978.....	1.04	0.09	0.75	1.88	10
1977.....	1.16	0.09	0.73	1.98	9
Louisiana					
2016.....	1.25	0.34	1.00	2.59	4
2015.....	1.27	0.33	0.98	2.59	4
2014.....	1.30	0.33	0.95	2.58	4
2013.....	1.34	0.32	0.93	2.58	4
2012.....	1.38	0.32	0.90	2.59	4
2011.....	1.39	0.30	0.88	2.57	4
2010.....	1.42	0.28	0.84	2.55	3
2009.....	1.50	0.28	0.85	2.63	3
2008.....	1.55	0.26	0.83	2.64	3

Decile values (1 = highest) apply only to State-level data. Numbers may not sum because of rounding.

**Table 4.** Per capita ethanol consumption for States, census regions, and the United States, 1977–2016. (Gallons of ethanol, based on population ages 14 and older.) (Continued)

State or other geographic area	Per capita consumption				U.S. decile for all beverages
	Beer	Wine	Spirits	All beverages	
2007.....	1.57	0.27	0.81	2.66	3
2006.....	1.59	0.25	0.78	2.63	3
2005.....	1.47	0.24	0.71	2.41	5
2004.....	1.38	0.26	0.73	2.36	5
2003.....	1.41	0.25	0.72	2.38	4
2002.....	1.32	0.24	0.70	2.26	6
2001.....	1.49	0.23	0.69	2.41	3
2000.....	1.51	0.22	0.70	2.44	3
1999.....	1.52	0.24	0.69	2.45	3
1998.....	1.48	0.23	0.70	2.40	3
1997.....	1.51	0.23	0.71	2.44	2
1996.....	1.52	0.22	0.72	2.46	2
1995.....	1.51	0.21	0.73	2.46	2
1994.....	1.45	0.21	0.73	2.39	3
1993.....	1.53	0.21	0.72	2.47	3
1992.....	1.55	0.22	0.74	2.51	3
1991.....	1.52	0.21	0.73	2.46	4
1990.....	1.53	0.23	0.78	2.54	5
1989.....	1.47	0.24	0.74	2.45	6
1988.....	1.49	0.24	0.71	2.44	6
1987.....	1.40	0.25	0.77	2.41	7
1986.....	1.42	0.26	0.79	2.47	6
1985.....	1.37	0.28	0.87	2.52	6
1984.....	1.42	0.29	0.95	2.66	6
1983.....	1.44	0.31	1.03	2.77	5
1982.....	1.49	0.30	1.00	2.78	5
1981.....	1.49	0.28	1.02	2.79	6
1980.....	1.40	0.27	1.03	2.70	6
1979.....	1.32	0.25	1.04	2.61	6
1978.....	1.32	0.25	1.04	2.60	6
1977.....	1.27	0.25	1.00	2.51	6
Maine					
2016.....	1.36	0.44	1.01	2.81	3
2015.....	1.37	0.44	0.97	2.78	3
2014.....	1.36	0.42	0.93	2.71	3
2013.....	1.36	0.42	0.91	2.69	3
2012.....	1.34	0.42	0.89	2.65	4
2011.....	1.31	0.42	0.87	2.60	3
2010.....	1.30	0.42	0.84	2.56	3
2009.....	1.31	0.42	0.82	2.55	4
2008.....	1.33	0.42	0.81	2.56	4
2007.....	1.35	0.42	0.80	2.57	4
2006.....	1.34	0.42	0.78	2.54	4
2005.....	1.34	0.41	0.77	2.52	3
2004.....	1.26	0.41	0.76	2.44	4
2003.....	1.25	0.40	0.74	2.39	4
2002.....	1.23	0.40	0.70	2.33	5
2001.....	1.21	0.37	0.70	2.28	5
2000.....	1.17	0.38	0.68	2.23	6
1999.....	1.16	0.36	0.69	2.21	6
1998.....	1.14	0.33	0.69	2.16	6
1997.....	1.16	0.32	0.68	2.16	6
1996.....	1.21	0.32	0.69	2.22	5
1995.....	1.14	0.28	0.70	2.12	6

Decile values (1 = highest) apply only to State-level data. Numbers may not sum because of rounding.

**Table 4.** Per capita ethanol consumption for States, census regions, and the United States, 1977–2016. (Gallons of ethanol, based on population ages 14 and older.) (Continued)

State or other geographic area	Per capita consumption				U.S. decile for all beverages
	Beer	Wine	Spirits	All beverages	
1994.....	1.13	0.27	0.77	2.18	6
1993.....	1.15	0.29	0.79	2.22	6
1992.....	1.16	0.29	0.78	2.23	6
1991.....	1.18	0.30	0.77	2.25	6
1990.....	1.21	0.31	0.82	2.34	6
1989.....	1.26	0.34	0.86	2.46	6
1988.....	1.29	0.36	0.91	2.55	5
1987.....	1.27	0.38	0.91	2.56	5
1986.....	1.29	0.36	0.92	2.57	6
1985.....	1.29	0.33	0.94	2.56	6
1984.....	1.25	0.31	1.02	2.57	6
1983.....	1.32	0.29	1.03	2.64	6
1982.....	1.30	0.30	1.02	2.62	6
1981.....	1.24	0.28	1.05	2.57	7
1980.....	1.32	0.28	1.06	2.66	6
1979.....	1.27	0.27	1.05	2.59	6
1978.....	1.28	0.26	1.03	2.57	6
1977.....	1.35	0.23	1.02	2.60	6
Maryland					
2016.....	0.83	0.40	0.92	2.15	8
2015.....	0.85	0.39	0.90	2.14	8
2014.....	0.86	0.39	0.90	2.15	8
2013.....	0.88	0.39	0.90	2.17	8
2012.....	0.91	0.39	0.90	2.20	8
2011.....	0.92	0.39	0.89	2.19	8
2010.....	0.94	0.38	0.89	2.21	7
2009.....	0.96	0.36	0.86	2.19	8
2008.....	0.99	0.36	0.84	2.19	8
2007.....	1.01	0.36	0.84	2.20	7
2006.....	1.01	0.34	0.83	2.18	7
2005.....	1.02	0.34	0.81	2.16	7
2004.....	1.03	0.33	0.79	2.15	7
2003.....	1.03	0.32	0.77	2.12	7
2002.....	1.06	0.31	0.76	2.12	7
2001.....	1.06	0.30	0.75	2.11	7
2000.....	1.04	0.30	0.75	2.09	7
1999.....	1.04	0.30	0.74	2.08	7
1998.....	1.05	0.30	0.73	2.08	7
1997.....	1.08	0.29	0.73	2.11	7
1996.....	1.05	0.29	0.74	2.08	7
1995.....	1.06	0.28	0.74	2.09	7
1994.....	1.09	0.28	0.78	2.15	6
1993.....	1.10	0.28	0.80	2.19	7
1992.....	1.11	0.29	0.86	2.26	6
1991.....	1.15	0.30	0.89	2.33	6
1990.....	1.22	0.33	0.96	2.51	5
1989.....	1.20	0.34	0.97	2.52	4
1988.....	1.24	0.36	1.00	2.60	4
1987.....	1.28	0.38	1.06	2.71	4
1986.....	1.28	0.38	1.07	2.73	4
1985.....	1.30	0.36	1.14	2.80	4
1984.....	1.31	0.36	1.17	2.84	4
1983.....	1.34	0.35	1.20	2.89	4
1982.....	1.27	0.32	1.16	2.76	5

Decile values (1 = highest) apply only to State-level data. Numbers may not sum because of rounding.

**Table 4.** Per capita ethanol consumption for States, census regions, and the United States, 1977–2016. (Gallons of ethanol, based on population ages 14 and older.) (Continued)

State or other geographic area	Per capita consumption				U.S. decile for all beverages
	Beer	Wine	Spirits	All beverages	
1981.....	1.39	0.34	1.33	3.06	4
1980.....	1.41	0.33	1.35	3.08	4
1979.....	1.43	0.31	1.39	3.13	3
1978.....	1.40	0.31	1.38	3.09	3
1977.....	1.36	0.30	1.38	3.05	3
Massachusetts					
2016.....	0.95	0.65	0.97	2.57	4
2015.....	0.97	0.65	0.91	2.52	5
2014.....	0.98	0.66	0.91	2.55	4
2013.....	1.00	0.66	0.89	2.56	5
2012.....	1.03	0.65	0.88	2.57	4
2011.....	1.02	0.64	0.88	2.54	4
2010.....	1.04	0.62	0.84	2.50	4
2009.....	1.03	0.62	0.85	2.49	4
2008.....	1.08	0.62	0.84	2.54	4
2007.....	1.11	0.62	0.87	2.59	4
2006.....	1.10	0.61	0.85	2.56	3
2005.....	1.07	0.59	0.85	2.51	3
2004.....	1.10	0.58	0.84	2.52	3
2003.....	1.10	0.56	0.82	2.49	3
2002.....	1.13	0.54	0.80	2.47	3
2001.....	1.13	0.52	0.79	2.44	3
2000.....	1.16	0.51	0.87	2.55	2
1999.....	1.09	0.51	0.79	2.39	4
1998.....	1.14	0.50	0.75	2.39	3
1997.....	1.13	0.49	0.76	2.39	3
1996.....	1.11	0.48	0.77	2.35	3
1995.....	1.13	0.44	0.78	2.35	3
1994.....	1.14	0.44	0.80	2.38	3
1993.....	1.14	0.44	0.80	2.38	4
1992.....	1.12	0.44	0.82	2.38	5
1991.....	1.19	0.43	0.87	2.49	3
1990.....	1.22	0.45	0.97	2.63	3
1989.....	1.24	0.46	1.00	2.70	3
1988.....	1.27	0.49	1.05	2.81	3
1987.....	1.27	0.50	1.11	2.88	3
1986.....	1.29	0.52	1.11	2.92	3
1985.....	1.28	0.50	1.19	2.97	3
1984.....	1.29	0.50	1.23	3.02	3
1983.....	1.36	0.49	1.20	3.05	3
1982.....	1.35	0.50	1.22	3.07	3
1981.....	1.44	0.49	1.24	3.17	3
1980.....	1.46	0.45	1.26	3.18	3
1979.....	1.40	0.43	1.24	3.07	3
1978.....	1.38	0.41	1.26	3.05	3
1977.....	1.35	0.37	1.25	2.97	3
Michigan					
2016.....	1.04	0.39	0.91	2.34	6
2015.....	0.99	0.37	0.89	2.25	7
2014.....	1.05	0.39	0.88	2.32	6
2013.....	1.02	0.37	0.85	2.24	7
2012.....	1.08	0.35	0.84	2.27	7
2011.....	1.07	0.35	0.83	2.25	7

Decile values (1 = highest) apply only to State-level data. Numbers may not sum because of rounding.

**Table 4.** Per capita ethanol consumption for States, census regions, and the United States, 1977–2016. (Gallons of ethanol, based on population ages 14 and older.) (Continued)

State or other geographic area	Per capita consumption				U.S. decile for all beverages
	Beer	Wine	Spirits	All beverages	
2010.....	1.09	0.33	0.81	2.23	7
2009.....	1.11	0.32	0.80	2.23	7
2008.....	1.13	0.30	0.79	2.22	7
2007.....	1.13	0.30	0.77	2.19	7
2006.....	1.13	0.29	0.76	2.18	7
2005.....	1.15	0.28	0.74	2.16	7
2004.....	1.16	0.27	0.72	2.15	7
2003.....	1.17	0.28	0.72	2.17	7
2002.....	1.19	0.25	0.69	2.13	7
2001.....	1.18	0.23	0.68	2.09	7
2000.....	1.20	0.24	0.68	2.13	7
1999.....	1.20	0.24	0.67	2.11	7
1998.....	1.20	0.22	0.68	2.10	7
1997.....	1.19	0.22	0.66	2.07	7
1996.....	1.22	0.22	0.66	2.09	7
1995.....	1.20	0.19	0.66	2.06	7
1994.....	1.23	0.20	0.67	2.10	7
1993.....	1.26	0.20	0.72	2.18	7
1992.....	1.26	0.22	0.74	2.21	7
1991.....	1.30	0.22	0.74	2.26	6
1990.....	1.33	0.28	0.80	2.42	6
1989.....	1.29	0.30	0.80	2.39	6
1988.....	1.32	0.32	0.84	2.48	6
1987.....	1.32	0.33	0.85	2.51	6
1986.....	1.33	0.33	0.90	2.57	5
1985.....	1.31	0.32	0.96	2.59	6
1984.....	1.33	0.31	0.98	2.61	6
1983.....	1.36	0.28	0.98	2.62	6
1982.....	1.35	0.39	0.99	2.73	6
1981.....	1.34	0.29	1.00	2.63	6
1980.....	1.34	0.28	1.02	2.65	6
1979.....	1.36	0.25	1.03	2.65	6
1978.....	1.43	0.25	1.05	2.74	5
1977.....	1.45	0.24	1.02	2.71	5
Minnesota					
2016.....	1.15	0.44	1.17	2.77	3
2015.....	1.16	0.43	1.14	2.73	3
2014.....	1.14	0.44	1.23	2.81	2
2013.....	1.13	0.43	1.16	2.72	3
2012.....	1.18	0.42	1.11	2.71	3
2011.....	1.13	0.34	0.99	2.47	5
2010.....	1.14	0.33	0.97	2.44	5
2009.....	1.19	0.37	1.04	2.59	4
2008.....	1.21	0.36	1.03	2.60	4
2007.....	1.23	0.36	1.01	2.60	3
2006.....	1.15	0.32	0.93	2.40	5
2005.....	1.18	0.33	0.97	2.48	4
2004.....	1.24	0.31	0.94	2.50	3
2003.....	1.22	0.29	0.91	2.43	3
2002.....	1.26	0.28	0.88	2.41	3
2001.....	1.25	0.26	0.88	2.39	4
2000.....	1.24	0.26	0.87	2.37	4
1999.....	1.23	0.27	0.86	2.36	4

Decile values (1 = highest) apply only to State-level data. Numbers may not sum because of rounding.

**Table 4.** Per capita ethanol consumption for States, census regions, and the United States, 1977–2016. (Gallons of ethanol, based on population ages 14 and older.) (Continued)

State or other geographic area	Per capita consumption				U.S. decile for all beverages
	Beer	Wine	Spirits	All beverages	
1998.....	1.16	0.27	0.84	2.27	4
1997.....	1.20	0.27	0.84	2.31	4
1996.....	1.23	0.26	0.83	2.31	4
1995.....	1.29	0.25	0.83	2.38	3
1994.....	1.27	0.25	0.83	2.35	4
1993.....	1.24	0.24	0.84	2.33	5
1992.....	1.25	0.25	0.85	2.35	5
1991.....	1.30	0.24	0.81	2.35	5
1990.....	1.32	0.27	0.96	2.55	4
1989.....	1.29	0.27	0.89	2.46	6
1988.....	1.31	0.30	0.90	2.51	5
1987.....	1.32	0.32	0.94	2.58	5
1986.....	1.31	0.34	0.93	2.57	5
1985.....	1.31	0.31	1.06	2.68	5
1984.....	1.34	0.28	1.07	2.69	5
1983.....	1.38	0.27	1.10	2.74	6
1982.....	1.37	0.27	1.11	2.75	6
1981.....	1.39	0.27	1.18	2.84	5
1980.....	1.39	0.26	1.20	2.85	5
1979.....	1.36	0.24	1.17	2.77	5
1978.....	1.32	0.23	1.16	2.71	5
1977.....	1.31	0.21	1.16	2.67	5
Mississippi					
2016.....	1.28	0.17	0.77	2.23	7
2015.....	1.31	0.17	0.77	2.24	7
2014.....	1.32	0.16	0.75	2.23	7
2013.....	1.35	0.16	0.73	2.24	7
2012.....	1.37	0.16	0.71	2.24	7
2011.....	1.36	0.16	0.71	2.22	7
2010.....	1.37	0.15	0.70	2.22	7
2009.....	1.41	0.15	0.70	2.26	7
2008.....	1.44	0.15	0.70	2.28	7
2007.....	1.45	0.14	0.68	2.26	7
2006.....	1.43	0.13	0.67	2.23	7
2005.....	1.40	0.13	0.65	2.18	7
2004.....	1.38	0.13	0.63	2.14	7
2003.....	1.38	0.12	0.63	2.13	7
2002.....	1.41	0.12	0.61	2.13	7
2001.....	1.40	0.11	0.60	2.11	7
2000.....	1.43	0.11	0.61	2.14	7
1999.....	1.42	0.11	0.61	2.14	7
1998.....	1.39	0.09	0.59	2.08	7
1997.....	1.39	0.09	0.61	2.09	7
1996.....	1.42	0.10	0.62	2.14	6
1995.....	1.37	0.10	0.61	2.09	7
1994.....	1.28	0.08	0.63	2.00	7
1993.....	1.37	0.10	0.63	2.11	7
1992.....	1.35	0.09	0.63	2.08	8
1991.....	1.32	0.09	0.64	2.05	8
1990.....	1.34	0.09	0.65	2.08	8
1989.....	1.28	0.09	0.66	2.04	9
1988.....	1.30	0.09	0.67	2.06	9
1987.....	1.28	0.09	0.66	2.04	9
1986.....	1.28	0.10	0.69	2.07	9

Decile values (1 = highest) apply only to State-level data. Numbers may not sum because of rounding.

**Table 4.** Per capita ethanol consumption for States, census regions, and the United States, 1977–2016. (Gallons of ethanol, based on population ages 14 and older.) (Continued)

State or other geographic area	Per capita consumption				U.S. decile for all beverages
	Beer	Wine	Spirits	All beverages	
1985.....	1.22	0.10	0.74	2.07	9
1984.....	1.20	0.11	0.77	2.08	9
1983.....	1.20	0.11	0.80	2.10	9
1982.....	1.18	0.11	0.81	2.10	9
1981.....	1.19	0.11	0.84	2.13	9
1980.....	1.13	0.10	0.86	2.09	9
1979.....	1.10	0.09	0.81	2.00	9
1978.....	1.11	0.10	0.88	2.09	8
1977.....	1.04	0.10	0.83	1.98	9
Missouri					
2016.....	1.15	0.38	0.96	2.49	5
2015.....	1.17	0.39	0.97	2.53	4
2014.....	1.16	0.36	0.88	2.40	5
2013.....	1.19	0.36	0.89	2.44	5
2012.....	1.22	0.34	0.86	2.42	5
2011.....	1.24	0.34	0.86	2.45	5
2010.....	1.27	0.32	0.81	2.41	5
2009.....	1.30	0.30	0.83	2.43	5
2008.....	1.32	0.30	0.80	2.42	5
2007.....	1.33	0.30	0.78	2.40	5
2006.....	1.33	0.28	0.76	2.37	5
2005.....	1.31	0.27	0.73	2.30	6
2004.....	1.33	0.27	0.72	2.32	5
2003.....	1.34	0.26	0.70	2.29	6
2002.....	1.36	0.25	0.67	2.27	5
2001.....	1.34	0.23	0.67	2.25	6
2000.....	1.35	0.23	0.67	2.25	5
1999.....	1.35	0.23	0.66	2.23	5
1998.....	1.33	0.23	0.63	2.18	6
1997.....	1.30	0.22	0.63	2.15	6
1996.....	1.31	0.22	0.57	2.10	7
1995.....	1.31	0.20	0.62	2.14	6
1994.....	1.36	0.19	0.66	2.21	6
1993.....	1.33	0.20	0.67	2.20	6
1992.....	1.34	0.21	0.69	2.24	6
1991.....	1.35	0.22	0.64	2.20	7
1990.....	1.37	0.22	0.70	2.30	7
1989.....	1.36	0.23	0.70	2.28	7
1988.....	1.35	0.26	0.70	2.31	7
1987.....	1.38	0.28	0.73	2.39	7
1986.....	1.38	0.28	0.73	2.39	7
1985.....	1.34	0.26	0.77	2.37	7
1984.....	1.35	0.26	0.68	2.29	8
1983.....	1.38	0.22	0.78	2.38	8
1982.....	1.39	0.22	0.79	2.39	7
1981.....	1.41	0.22	0.84	2.46	7
1980.....	1.39	0.20	0.84	2.44	7
1979.....	1.36	0.20	0.86	2.42	7
1978.....	1.31	0.19	0.89	2.39	7
1977.....	1.23	0.19	0.83	2.24	8
Montana					
2016.....	1.62	0.52	0.98	3.11	2
2015.....	1.63	0.50	0.96	3.09	2

Decile values (1 = highest) apply only to State-level data. Numbers may not sum because of rounding.

**Table 4.** Per capita ethanol consumption for States, census regions, and the United States, 1977–2016. (Gallons of ethanol, based on population ages 14 and older.) (Continued)

State or other geographic area	Per capita consumption				U.S. decile for all beverages
	Beer	Wine	Spirits	All beverages	
2014.....	1.62	0.50	0.96	3.08	2
2013.....	1.63	0.49	0.95	3.07	2
2012.....	1.65	0.48	0.94	3.07	2
2011.....	1.61	0.47	0.90	2.97	2
2010.....	1.65	0.45	0.88	2.98	2
2009.....	1.64	0.45	0.87	2.96	2
2008.....	1.66	0.44	0.87	2.97	2
2007.....	1.66	0.43	0.85	2.94	2
2006.....	1.63	0.41	0.82	2.87	2
2005.....	1.59	0.42	0.77	2.78	2
2004.....	1.57	0.34	0.75	2.66	2
2003.....	1.56	0.33	0.72	2.62	2
2002.....	1.62	0.33	0.70	2.65	2
2001.....	1.58	0.30	0.68	2.56	2
2000.....	1.57	0.29	0.68	2.54	2
1999.....	1.56	0.28	0.67	2.51	2
1998.....	1.53	0.27	0.65	2.45	2
1997.....	1.41	0.27	0.64	2.32	4
1996.....	1.55	0.26	0.64	2.45	3
1995.....	1.52	0.25	0.78	2.55	2
1994.....	1.57	0.24	0.70	2.51	2
1993.....	1.49	0.25	0.73	2.47	3
1992.....	1.59	0.26	0.75	2.61	2
1991.....	1.61	0.28	0.76	2.64	3
1990.....	1.61	0.29	0.77	2.67	3
1989.....	1.59	0.29	0.73	2.61	4
1988.....	1.61	0.32	0.77	2.70	4
1987.....	1.59	0.34	0.78	2.70	4
1986.....	1.60	0.34	0.82	2.76	4
1985.....	1.62	0.33	0.89	2.84	4
1984.....	1.71	0.32	0.93	2.97	3
1983.....	1.80	0.32	0.99	3.11	3
1982.....	1.82	0.32	1.02	3.16	3
1981.....	1.90	0.33	1.05	3.27	3
1980.....	1.82	0.35	1.03	3.20	3
1979.....	1.83	0.41	1.05	3.29	2
1978.....	1.82	0.20	1.07	3.09	2
1977.....	1.82	0.20	1.10	3.11	2
<b>Nebraska</b>					
2016.....	1.30	0.22	0.71	2.23	7
2015.....	1.34	0.22	0.71	2.27	6
2014.....	1.37	0.21	0.71	2.30	7
2013.....	1.39	0.21	0.71	2.31	6
2012.....	1.41	0.21	0.69	2.31	7
2011.....	1.39	0.21	0.69	2.28	6
2010.....	1.40	0.21	0.67	2.28	6
2009.....	1.42	0.20	0.67	2.29	6
2008.....	1.45	0.20	0.68	2.33	6
2007.....	1.43	0.20	0.67	2.31	6
2006.....	1.42	0.21	0.71	2.35	6
2005.....	1.41	0.20	0.68	2.29	6
2004.....	1.44	0.20	0.65	2.28	6
2003.....	1.43	0.19	0.63	2.24	6
2002.....	1.45	0.17	0.61	2.23	6

Decile values (1 = highest) apply only to State-level data. Numbers may not sum because of rounding.



**Table 4.** Per capita ethanol consumption for States, census regions, and the United States, 1977–2016. (Gallons of ethanol, based on population ages 14 and older.) (Continued)

State or other geographic area	Per capita consumption				U.S. decile for all beverages
	Beer	Wine	Spirits	All beverages	
2001.....	1.43	0.16	0.60	2.20	6
2000.....	1.44	0.17	0.62	2.23	6
1999.....	1.42	0.17	0.60	2.19	6
1998.....	1.39	0.18	0.58	2.16	6
1997.....	1.35	0.18	0.56	2.09	7
1996.....	1.35	0.18	0.57	2.11	6
1995.....	1.35	0.19	0.57	2.10	7
1994.....	1.39	0.18	0.57	2.14	7
1993.....	1.37	0.18	0.59	2.14	7
1992.....	1.37	0.18	0.61	2.16	7
1991.....	1.40	0.18	0.61	2.19	7
1990.....	1.41	0.20	0.64	2.25	7
1989.....	1.41	0.20	0.64	2.26	7
1988.....	1.41	0.22	0.66	2.30	7
1987.....	1.43	0.23	0.67	2.33	7
1986.....	1.41	0.23	0.69	2.33	7
1985.....	1.41	0.22	0.76	2.39	7
1984.....	1.46	0.21	0.77	2.43	7
1983.....	1.50	0.21	0.80	2.51	7
1982.....	1.51	0.28	0.58	2.37	7
1981.....	1.57	0.20	0.88	2.65	6
1980.....	1.56	0.19	0.88	2.63	6
1979.....	1.52	0.18	0.89	2.59	7
1978.....	1.48	0.18	0.90	2.56	6
1977.....	1.46	0.17	0.91	2.54	6
Nevada					
2016.....	1.41	0.61	1.44	3.46	1
2015.....	1.38	0.66	1.29	3.33	1
2014.....	1.41	0.66	1.30	3.36	1
2013.....	1.40	0.63	1.28	3.31	1
2012.....	1.41	0.62	1.24	3.27	1
2011.....	1.45	0.63	1.27	3.35	1
2010.....	1.49	0.60	1.21	3.30	1
2009.....	1.53	0.56	1.11	3.21	1
2008.....	1.63	0.61	1.29	3.53	1
2007.....	1.66	0.62	1.23	3.52	1
2006.....	1.71	0.65	1.28	3.63	1
2005.....	1.69	0.62	1.21	3.52	1
2004.....	1.73	0.63	1.25	3.61	1
2003.....	1.74	0.61	1.23	3.59	1
2002.....	1.74	0.60	1.22	3.56	1
2001.....	1.79	0.59	1.21	3.59	1
2000.....	1.79	0.62	1.26	3.67	1
1999.....	1.82	0.63	1.29	3.74	1
1998.....	1.80	0.58	1.23	3.62	1
1997.....	1.84	0.58	1.30	3.72	1
1996.....	1.91	0.59	1.39	3.89	1
1995.....	1.87	0.58	1.39	3.84	1
1994.....	1.93	0.57	1.51	4.00	1
1993.....	1.95	0.58	1.54	4.07	1
1992.....	2.02	0.62	1.61	4.25	1
1991.....	2.05	0.63	1.63	4.31	1
1990.....	2.17	0.69	1.92	4.78	1

Decile values (1 = highest) apply only to State-level data. Numbers may not sum because of rounding.

**Table 4.** Per capita ethanol consumption for States, census regions, and the United States, 1977–2016. (Gallons of ethanol, based on population ages 14 and older.) (Continued)

State or other geographic area	Per capita consumption				U.S. decile for all beverages
	Beer	Wine	Spirits	All beverages	
1989.....	2.12	0.71	1.87	4.70	1
1988.....	2.08	0.76	1.95	4.80	1
1987.....	2.01	0.83	2.05	4.89	1
1986.....	2.04	0.86	2.07	4.97	1
1985.....	1.96	0.84	2.18	4.99	1
1984.....	1.97	0.80	2.32	5.10	1
1983.....	1.96	0.78	2.43	5.18	1
1982.....	2.00	0.77	2.50	5.27	1
1981.....	2.08	0.80	2.71	5.59	1
1980.....	2.06	0.78	2.90	5.75	1
1979.....	2.07	0.79	2.97	5.83	1
1978.....	2.01	0.77	3.34	6.13	1
1977.....	1.99	0.77	3.56	6.32	1
New Hampshire					
2016.....	1.87	0.88	2.00	4.76	1
2015.....	1.88	0.88	1.96	4.72	1
2014.....	1.69	0.89	1.96	4.54	1
2013.....	1.86	0.89	1.93	4.68	1
2012.....	1.90	0.86	1.89	4.65	1
2011.....	1.86	0.92	1.98	4.77	1
2010.....	1.81	0.84	1.85	4.50	1
2009.....	1.79	0.84	1.84	4.47	1
2008.....	1.78	0.81	1.79	4.39	1
2007.....	1.82	0.79	1.75	4.36	1
2006.....	1.73	0.78	1.77	4.28	1
2005.....	1.75	0.75	1.71	4.20	1
2004.....	1.74	0.73	1.67	4.14	1
2003.....	1.75	0.71	1.63	4.09	1
2002.....	1.75	0.70	1.64	4.09	1
2001.....	1.75	0.66	1.62	4.03	1
2000.....	1.78	0.65	1.63	4.06	1
1999.....	1.77	0.65	1.64	4.06	1
1998.....	1.77	0.55	1.67	3.99	1
1997.....	1.78	0.54	1.72	4.04	1
1996.....	1.78	0.53	1.79	4.11	1
1995.....	1.73	0.50	1.79	4.02	1
1994.....	1.75	0.48	1.90	4.13	1
1993.....	1.83	0.54	2.01	4.38	1
1992.....	1.81	0.52	1.96	4.30	1
1991.....	1.85	0.49	1.96	4.30	1
1990.....	1.85	0.49	1.97	4.30	1
1989.....	1.87	0.50	2.00	4.38	1
1988.....	1.91	0.49	1.94	4.34	1
1987.....	1.93	0.50	1.99	4.42	1
1986.....	1.93	0.52	2.06	4.52	1
1985.....	1.99	0.53	2.22	4.74	1
1984.....	1.99	0.59	2.33	4.92	1
1983.....	2.17	0.56	2.36	5.09	1
1982.....	1.90	0.59	2.35	4.84	1
1981.....	1.89	0.59	2.43	4.91	1
1980.....	1.93	0.60	2.49	5.02	1
1979.....	1.94	0.61	2.56	5.10	1
1978.....	1.95	0.53	2.88	5.36	1

Decile values (1 = highest) apply only to State-level data. Numbers may not sum because of rounding.

**Table 4.** Per capita ethanol consumption for States, census regions, and the United States, 1977–2016. (Gallons of ethanol, based on population ages 14 and older.) (Continued)

State or other geographic area	Per capita consumption				U.S. decile for all beverages
	Beer	Wine	Spirits	All beverages	
1977.....	1.86	0.49	2.88	5.23	1
New Jersey					
2016.....	0.82	0.59	0.92	2.34	6
2015.....	0.83	0.60	0.92	2.36	6
2014.....	0.84	0.62	0.92	2.37	5
2013.....	0.84	0.61	0.92	2.36	5
2012.....	0.88	0.60	0.90	2.39	5
2011.....	0.89	0.58	0.89	2.36	5
2010.....	0.92	0.57	0.86	2.35	6
2009.....	0.91	0.57	0.86	2.34	6
2008.....	0.93	0.55	0.86	2.35	6
2007.....	0.93	0.55	0.86	2.33	6
2006.....	0.95	0.54	0.85	2.33	6
2005.....	0.95	0.52	0.83	2.30	5
2004.....	0.96	0.52	0.82	2.30	6
2003.....	0.95	0.50	0.80	2.24	6
2002.....	0.98	0.49	0.77	2.24	6
2001.....	0.99	0.47	0.75	2.20	6
2000.....	0.97	0.47	0.76	2.20	6
1999.....	0.97	0.47	0.74	2.18	7
1998.....	0.98	0.46	0.71	2.15	6
1997.....	0.99	0.46	0.74	2.19	5
1996.....	1.00	0.44	0.76	2.20	6
1995.....	1.06	0.44	0.79	2.28	4
1994.....	1.04	0.43	0.79	2.27	5
1993.....	1.07	0.42	0.79	2.29	5
1992.....	1.07	0.44	0.83	2.34	5
1991.....	1.09	0.43	0.82	2.34	6
1990.....	1.15	0.48	0.95	2.58	4
1989.....	1.13	0.50	0.95	2.58	4
1988.....	1.15	0.51	0.93	2.58	4
1987.....	1.18	0.54	1.00	2.72	4
1986.....	1.17	0.56	1.03	2.77	3
1985.....	1.17	0.55	1.07	2.79	4
1984.....	1.18	0.54	1.10	2.82	4
1983.....	1.20	0.52	1.13	2.85	4
1982.....	1.21	0.52	1.13	2.87	4
1981.....	1.21	0.51	1.15	2.87	5
1980.....	1.22	0.47	1.13	2.82	5
1979.....	1.18	0.43	1.10	2.71	6
1978.....	1.17	0.41	1.10	2.69	6
1977.....	1.16	0.40	1.13	2.69	5
New Mexico					
2016.....	1.11	0.31	0.85	2.27	7
2015.....	1.03	0.30	0.78	2.11	8
2014.....	1.29	0.31	0.82	2.42	5
2013.....	1.17	0.34	0.85	2.35	6
2012.....	1.24	0.33	0.79	2.36	6
2011.....	1.32	0.31	0.73	2.35	6
2010.....	1.23	0.31	0.74	2.28	6
2009.....	1.34	0.31	0.72	2.38	5
2008.....	1.41	0.31	0.71	2.43	5
2007.....	1.39	0.30	0.70	2.39	5

Decile values (1 = highest) apply only to State-level data. Numbers may not sum because of rounding.

**Table 4.** Per capita ethanol consumption for States, census regions, and the United States, 1977–2016. (Gallons of ethanol, based on population ages 14 and older.) (Continued)

State or other geographic area	Per capita consumption				U.S. decile for all beverages
	Beer	Wine	Spirits	All beverages	
2006.....	1.37	0.30	0.69	2.36	5
2005.....	1.47	0.29	0.66	2.42	4
2004.....	1.46	0.25	0.66	2.36	5
2003.....	1.52	0.27	0.61	2.40	4
2002.....	1.52	0.26	0.61	2.40	4
2001.....	1.54	0.25	0.61	2.39	4
2000.....	1.53	0.25	0.61	2.38	4
1999.....	1.53	0.25	0.59	2.36	4
1998.....	1.49	0.24	0.58	2.31	4
1997.....	1.51	0.24	0.58	2.33	3
1996.....	1.55	0.24	0.59	2.38	3
1995.....	1.56	0.24	0.60	2.40	3
1994.....	1.46	0.19	0.60	2.25	5
1993.....	1.53	0.23	0.63	2.39	3
1992.....	1.56	0.25	0.66	2.47	4
1991.....	1.64	0.26	0.64	2.54	3
1990.....	1.68	0.28	0.68	2.64	3
1989.....	1.67	0.29	0.66	2.62	4
1988.....	1.66	0.33	0.68	2.67	4
1987.....	1.65	0.36	0.68	2.69	4
1986.....	1.66	0.36	0.71	2.73	4
1985.....	1.71	0.36	0.77	2.84	4
1984.....	1.72	0.28	0.76	2.76	5
1983.....	1.72	0.31	0.98	3.01	4
1982.....	1.72	0.34	0.93	2.99	4
1981.....	1.73	0.32	0.95	3.00	4
1980.....	1.65	0.32	0.99	2.97	4
1979.....	1.64	0.29	0.97	2.91	4
1978.....	1.65	0.31	0.96	2.93	4
1977.....	1.62	0.31	0.95	2.88	4
New York					
2016.....	0.91	0.53	0.78	2.22	8
2015.....	0.90	0.50	0.77	2.18	7
2014.....	0.90	0.53	0.76	2.20	8
2013.....	0.93	0.51	0.77	2.21	8
2012.....	0.91	0.51	0.75	2.17	8
2011.....	0.89	0.50	0.72	2.11	8
2010.....	0.89	0.48	0.71	2.09	8
2009.....	0.92	0.47	0.70	2.08	8
2008.....	0.93	0.47	0.68	2.08	8
2007.....	0.93	0.47	0.69	2.10	8
2006.....	0.89	0.46	0.66	2.01	8
2005.....	0.91	0.43	0.65	1.99	9
2004.....	0.92	0.42	0.62	1.96	9
2003.....	0.93	0.40	0.61	1.94	9
2002.....	0.95	0.38	0.59	1.92	9
2001.....	0.96	0.37	0.56	1.89	9
2000.....	0.92	0.38	0.58	1.88	9
1999.....	0.93	0.37	0.56	1.85	9
1998.....	0.95	0.38	0.51	1.84	9
1997.....	0.86	0.36	0.56	1.79	9
1996.....	0.91	0.36	0.57	1.84	9
1995.....	1.00	0.38	0.57	1.95	8
1994.....	0.98	0.35	0.60	1.93	8

Decile values (1 = highest) apply only to State-level data. Numbers may not sum because of rounding.

**Table 4.** Per capita ethanol consumption for States, census regions, and the United States, 1977–2016. (Gallons of ethanol, based on population ages 14 and older.) (Continued)

State or other geographic area	Per capita consumption				U.S. decile for all beverages
	Beer	Wine	Spirits	All beverages	
1993.....	1.00	0.35	0.62	1.97	8
1992.....	1.04	0.37	0.68	2.09	8
1991.....	1.09	0.37	0.69	2.14	7
1990.....	1.13	0.41	0.76	2.30	7
1989.....	1.11	0.42	0.81	2.34	7
1988.....	1.14	0.44	0.86	2.45	6
1987.....	1.14	0.47	0.90	2.51	6
1986.....	1.12	0.50	0.91	2.53	6
1985.....	1.14	0.49	0.98	2.61	5
1984.....	1.14	0.49	1.03	2.67	5
1983.....	1.23	0.49	1.05	2.77	5
1982.....	1.26	0.48	1.11	2.85	4
1981.....	1.25	0.46	1.12	2.83	5
1980.....	1.27	0.46	1.17	2.91	5
1979.....	1.21	0.44	1.17	2.83	5
1978.....	1.18	0.42	1.18	2.78	5
1977.....	1.18	0.39	1.18	2.75	5
North Carolina					
2016.....	1.05	0.43	0.64	2.13	9
2015.....	1.05	0.42	0.63	2.10	8
2014.....	1.04	0.41	0.61	2.06	8
2013.....	1.04	0.39	0.60	2.03	9
2012.....	1.07	0.38	0.60	2.05	8
2011.....	1.05	0.37	0.58	2.01	9
2010.....	1.08	0.35	0.57	2.01	9
2009.....	1.09	0.33	0.57	1.99	9
2008.....	1.13	0.34	0.57	2.03	9
2007.....	1.15	0.33	0.56	2.04	9
2006.....	1.14	0.32	0.54	2.01	9
2005.....	1.13	0.30	0.54	1.96	9
2004.....	1.16	0.30	0.53	1.99	8
2003.....	1.21	0.27	0.52	2.00	8
2002.....	1.25	0.27	0.50	2.02	8
2001.....	1.24	0.25	0.51	2.00	8
2000.....	1.22	0.25	0.52	1.98	8
1999.....	1.21	0.24	0.51	1.96	8
1998.....	1.21	0.23	0.50	1.94	8
1997.....	1.22	0.23	0.52	1.97	7
1996.....	1.21	0.24	0.52	1.98	7
1995.....	1.12	0.21	0.53	1.87	9
1994.....	1.14	0.21	0.54	1.89	8
1993.....	1.14	0.22	0.56	1.92	9
1992.....	1.14	0.23	0.59	1.96	8
1991.....	1.11	0.24	0.60	1.96	9
1990.....	1.16	0.27	0.65	2.08	9
1989.....	1.13	0.27	0.66	2.05	8
1988.....	1.11	0.28	0.68	2.08	8
1987.....	1.11	0.28	0.71	2.09	9
1986.....	1.11	0.30	0.74	2.15	8
1985.....	1.10	0.27	0.76	2.13	8
1984.....	1.11	0.24	0.78	2.13	8
1983.....	1.11	0.22	0.80	2.12	9
1982.....	1.07	0.21	0.85	2.13	9
1981.....	1.10	0.21	0.86	2.16	9

Decile values (1 = highest) apply only to State-level data. Numbers may not sum because of rounding.

**Table 4.** Per capita ethanol consumption for States, census regions, and the United States, 1977–2016. (Gallons of ethanol, based on population ages 14 and older.) (Continued)

State or other geographic area	Per capita consumption				U.S. decile for all beverages
	Beer	Wine	Spirits	All beverages	
1980.....	1.10	0.20	0.85	2.16	9
1979.....	1.04	0.21	0.84	2.09	9
1978.....	1.02	0.19	0.83	2.04	9
1977.....	0.98	0.19	0.81	1.98	9
North Dakota					
2016.....	1.64	0.34	1.29	3.26	1
2015.....	1.58	0.35	1.32	3.25	1
2014.....	1.67	0.35	1.39	3.41	1
2013.....	1.68	0.32	1.37	3.38	1
2012.....	1.75	0.30	1.37	3.42	1
2011.....	1.66	0.26	1.26	3.18	1
2010.....	1.49	0.25	1.19	2.93	2
2009.....	1.59	0.24	1.13	2.96	2
2008.....	1.60	0.23	1.11	2.94	2
2007.....	1.53	0.23	1.06	2.82	2
2006.....	1.50	0.20	1.00	2.70	3
2005.....	1.48	0.18	0.94	2.60	3
2004.....	1.49	0.18	0.82	2.49	3
2003.....	1.53	0.17	0.86	2.56	2
2002.....	1.51	0.16	0.83	2.50	3
2001.....	1.46	0.15	0.81	2.42	3
2000.....	1.47	0.15	0.79	2.40	4
1999.....	1.48	0.15	0.78	2.41	3
1998.....	1.45	0.13	0.76	2.35	4
1997.....	1.40	0.13	0.77	2.30	4
1996.....	1.40	0.13	0.77	2.30	4
1995.....	1.36	0.16	0.77	2.28	4
1994.....	1.39	0.15	0.78	2.32	4
1993.....	1.37	0.15	0.84	2.36	4
1992.....	1.38	0.15	0.85	2.39	5
1991.....	1.43	0.16	0.86	2.44	4
1990.....	1.47	0.17	0.93	2.56	4
1989.....	1.41	0.17	0.86	2.44	6
1988.....	1.41	0.19	0.88	2.48	6
1987.....	1.37	0.21	0.89	2.47	6
1986.....	1.34	0.22	0.87	2.44	7
1985.....	1.34	0.19	0.96	2.50	7
1984.....	1.41	0.17	0.99	2.56	6
1983.....	1.49	0.17	1.05	2.71	6
1982.....	1.52	0.18	1.09	2.79	5
1981.....	1.53	0.18	1.14	2.85	5
1980.....	1.52	0.17	1.13	2.82	5
1979.....	1.46	0.16	1.10	2.72	5
1978.....	1.45	0.16	1.15	2.76	5
1977.....	1.35	0.15	1.12	2.62	6
Ohio					
2016.....	1.15	0.31	0.58	2.04	9
2015.....	1.17	0.30	0.56	2.03	9
2014.....	1.19	0.30	0.54	2.03	9
2013.....	1.22	0.30	0.53	2.04	8
2012.....	1.23	0.29	0.51	2.03	9
2011.....	1.24	0.28	0.49	2.02	9
2010.....	1.29	0.25	0.48	2.02	8

Decile values (1 = highest) apply only to State-level data. Numbers may not sum because of rounding.

**Table 4.** Per capita ethanol consumption for States, census regions, and the United States, 1977–2016. (Gallons of ethanol, based on population ages 14 and older.) (Continued)

State or other geographic area	Per capita consumption				U.S. decile for all beverages
	Beer	Wine	Spirits	All beverages	
2009.....	1.30	0.27	0.47	2.03	8
2008.....	1.33	0.26	0.46	2.05	9
2007.....	1.34	0.25	0.45	2.04	9
2006.....	1.33	0.24	0.44	2.01	8
2005.....	1.34	0.23	0.43	2.00	8
2004.....	1.34	0.22	0.42	1.97	9
2003.....	1.34	0.22	0.40	1.95	9
2002.....	1.35	0.21	0.39	1.95	8
2001.....	1.34	0.21	0.39	1.93	9
2000.....	1.32	0.21	0.38	1.91	9
1999.....	1.32	0.20	0.37	1.90	9
1998.....	1.30	0.19	0.44	1.94	8
1997.....	1.28	0.19	0.43	1.89	8
1996.....	1.36	0.18	0.43	1.97	8
1995.....	1.29	0.17	0.43	1.89	8
1994.....	1.31	0.16	0.37	1.85	9
1993.....	1.29	0.16	0.50	1.95	8
1992.....	1.32	0.17	0.50	1.98	8
1991.....	1.33	0.18	0.51	2.03	8
1990.....	1.34	0.22	0.53	2.09	8
1989.....	1.36	0.22	0.51	2.09	8
1988.....	1.35	0.24	0.55	2.13	8
1987.....	1.35	0.24	0.59	2.18	8
1986.....	1.32	0.25	0.60	2.18	8
1985.....	1.37	0.25	0.59	2.21	8
1984.....	1.41	0.25	0.61	2.27	8
1983.....	1.36	0.22	0.65	2.23	8
1982.....	1.40	0.22	0.66	2.28	8
1981.....	1.35	0.22	0.68	2.25	8
1980.....	1.39	0.21	0.72	2.33	8
1979.....	1.35	0.19	0.70	2.25	8
1978.....	1.19	0.20	0.70	2.08	9
1977.....	1.16	0.18	0.70	2.03	8
Oklahoma					
2016.....	1.05	0.20	0.63	1.88	10
2015.....	1.07	0.19	0.62	1.89	10
2014.....	1.09	0.19	0.63	1.91	10
2013.....	1.11	0.19	0.62	1.93	9
2012.....	1.14	0.19	0.61	1.94	10
2011.....	1.14	0.19	0.59	1.92	9
2010.....	1.16	0.18	0.58	1.92	9
2009.....	1.17	0.18	0.58	1.93	9
2008.....	1.22	0.18	0.58	1.97	9
2007.....	1.17	0.17	0.57	1.91	9
2006.....	1.13	0.17	0.56	1.87	10
2005.....	1.09	0.16	0.55	1.80	10
2004.....	1.11	0.13	0.46	1.70	10
2003.....	1.06	0.13	0.74	1.93	9
2002.....	1.12	0.13	0.58	1.82	10
2001.....	1.11	0.12	0.43	1.65	10
2000.....	1.12	0.12	0.44	1.69	10
1999.....	1.11	0.12	0.44	1.68	10
1998.....	1.12	0.12	0.43	1.68	10
1997.....	1.10	0.12	0.43	1.65	10

Decile values (1 = highest) apply only to State-level data. Numbers may not sum because of rounding.

**Table 4.** Per capita ethanol consumption for States, census regions, and the United States, 1977–2016. (Gallons of ethanol, based on population ages 14 and older.) (Continued)

State or other geographic area	Per capita consumption				U.S. decile for all beverages
	Beer	Wine	Spirits	All beverages	
1996.....	1.09	0.12	0.45	1.66	10
1995.....	1.10	0.12	0.44	1.66	10
1994.....	1.15	0.13	0.50	1.78	9
1993.....	1.11	0.11	0.48	1.70	10
1992.....	1.13	0.13	0.55	1.81	9
1991.....	1.09	0.13	0.54	1.76	10
1990.....	1.12	0.14	0.55	1.81	10
1989.....	1.08	0.14	0.54	1.75	10
1988.....	1.07	0.14	0.52	1.73	10
1987.....	1.06	0.15	0.58	1.79	10
1986.....	1.06	0.15	0.62	1.84	10
1985.....	1.05	0.15	0.68	1.88	10
1984.....	1.00	0.16	0.74	1.91	10
1983.....	1.04	0.16	0.77	1.97	9
1982.....	1.15	0.16	0.82	2.14	9
1981.....	1.14	0.16	0.83	2.13	9
1980.....	1.07	0.16	0.71	1.94	9
1979.....	1.03	0.13	0.78	1.94	9
1978.....	1.05	0.14	0.80	2.00	9
1977.....	1.04	0.13	0.77	1.95	9
Oregon					
2016.....	1.24	0.60	0.91	2.75	3
2015.....	1.23	0.58	0.90	2.71	4
2014.....	1.23	0.57	0.90	2.70	4
2013.....	1.20	0.57	0.89	2.66	4
2012.....	1.21	0.57	0.89	2.66	4
2011.....	1.18	0.56	0.85	2.59	3
2010.....	1.19	0.49	0.83	2.51	4
2009.....	1.28	0.49	0.82	2.59	3
2008.....	1.22	0.49	0.83	2.54	4
2007.....	1.35	0.50	0.81	2.65	3
2006.....	1.32	0.49	0.78	2.59	3
2005.....	1.16	0.50	0.75	2.40	5
2004.....	1.23	0.49	0.72	2.44	4
2003.....	1.20	0.47	0.69	2.36	5
2002.....	1.22	0.46	0.66	2.34	4
2001.....	1.22	0.43	0.65	2.30	4
2000.....	1.20	0.44	0.64	2.28	5
1999.....	1.21	0.43	0.63	2.27	5
1998.....	1.20	0.43	0.61	2.25	4
1997.....	1.19	0.44	0.60	2.24	5
1996.....	1.23	0.44	0.61	2.27	5
1995.....	1.21	0.42	0.59	2.23	5
1994.....	1.23	0.37	0.62	2.21	6
1993.....	1.24	0.43	0.64	2.31	5
1992.....	1.29	0.46	0.67	2.41	4
1991.....	1.28	0.44	0.67	2.38	5
1990.....	1.32	0.47	0.73	2.51	5
1989.....	1.28	0.47	0.70	2.46	5
1988.....	1.29	0.52	0.72	2.52	5
1987.....	1.28	0.53	0.73	2.54	5
1986.....	1.28	0.55	0.74	2.57	6
1985.....	1.25	0.55	0.77	2.58	6
1984.....	1.28	0.53	0.82	2.63	6

Decile values (1 = highest) apply only to State-level data. Numbers may not sum because of rounding.



**Table 4.** Per capita ethanol consumption for States, census regions, and the United States, 1977–2016. (Gallons of ethanol, based on population ages 14 and older.) (Continued)

State or other geographic area	Per capita consumption				U.S. decile for all beverages
	Beer	Wine	Spirits	All beverages	
1983.....	1.32	0.53	0.85	2.70	6
1982.....	1.32	0.52	0.88	2.72	6
1981.....	1.37	0.50	0.92	2.79	6
1980.....	1.36	0.50	0.94	2.81	5
1979.....	1.36	0.47	0.94	2.77	5
1978.....	1.32	0.46	0.96	2.74	5
1977.....	1.30	0.45	0.94	2.70	5
Pennsylvania					
2016.....	1.31	0.33	0.72	2.36	5
2015.....	1.31	0.32	0.70	2.33	6
2014.....	1.32	0.32	0.70	2.34	6
2013.....	1.34	0.31	0.68	2.33	6
2012.....	1.36	0.31	0.67	2.34	6
2011.....	1.37	0.30	0.66	2.33	6
2010.....	1.37	0.29	0.64	2.30	6
2009.....	1.37	0.28	0.63	2.27	7
2008.....	1.36	0.26	0.61	2.23	7
2007.....	1.35	0.25	0.58	2.18	8
2006.....	1.32	0.23	0.55	2.10	8
2005.....	1.32	0.23	0.55	2.11	8
2004.....	1.30	0.23	0.53	2.06	8
2003.....	1.31	0.22	0.51	2.04	8
2002.....	1.35	0.21	0.49	2.06	8
2001.....	1.33	0.20	0.48	2.02	8
2000.....	1.29	0.20	0.47	1.96	8
1999.....	1.27	0.20	0.46	1.92	8
1998.....	1.21	0.18	0.45	1.85	9
1997.....	1.32	0.18	0.45	1.95	8
1996.....	1.26	0.17	0.45	1.88	8
1995.....	1.26	0.17	0.45	1.88	8
1994.....	1.28	0.18	0.47	1.93	8
1993.....	1.31	0.17	0.48	1.96	8
1992.....	1.30	0.18	0.51	1.99	8
1991.....	1.36	0.17	0.52	2.05	8
1990.....	1.42	0.18	0.55	2.15	8
1989.....	1.38	0.18	0.57	2.13	8
1988.....	1.41	0.19	0.54	2.14	8
1987.....	1.40	0.20	0.62	2.22	8
1986.....	1.40	0.21	0.64	2.25	8
1985.....	1.38	0.21	0.65	2.23	8
1984.....	1.38	0.21	0.67	2.26	8
1983.....	1.41	0.22	0.67	2.31	8
1982.....	1.44	0.23	0.70	2.37	8
1981.....	1.42	0.23	0.72	2.38	8
1980.....	1.45	0.22	0.71	2.39	7
1979.....	1.40	0.22	0.72	2.34	8
1978.....	1.35	0.21	0.73	2.30	8
1977.....	1.34	0.20	0.74	2.27	8
Rhode Island					
2016.....	0.94	0.58	1.05	2.57	5
2015.....	0.96	0.57	0.99	2.52	5
2014.....	1.02	0.51	0.86	2.39	5
2013.....	1.00	0.58	0.98	2.56	4

Decile values (1 = highest) apply only to State-level data. Numbers may not sum because of rounding.

**Table 4.** Per capita ethanol consumption for States, census regions, and the United States, 1977–2016. (Gallons of ethanol, based on population ages 14 and older.) (Continued)

State or other geographic area	Per capita consumption				U.S. decile for all beverages
	Beer	Wine	Spirits	All beverages	
2012.....	1.03	0.59	0.97	2.58	4
2011.....	1.04	0.58	0.94	2.55	4
2010.....	1.07	0.56	0.92	2.55	4
2009.....	1.07	0.55	0.85	2.47	5
2008.....	1.09	0.52	0.84	2.46	5
2007.....	1.10	0.53	0.82	2.45	5
2006.....	1.07	0.51	0.83	2.41	5
2005.....	0.98	0.49	0.82	2.29	6
2004.....	1.13	0.50	0.80	2.42	5
2003.....	1.13	0.51	0.80	2.45	3
2002.....	1.17	0.48	0.74	2.40	4
2001.....	1.19	0.46	0.70	2.36	4
2000.....	1.16	0.46	0.70	2.31	4
1999.....	1.14	0.45	0.69	2.28	4
1998.....	1.14	0.47	0.63	2.24	5
1997.....	1.22	0.44	0.64	2.30	4
1996.....	1.16	0.42	0.66	2.24	5
1995.....	1.18	0.38	0.63	2.19	6
1994.....	1.23	0.38	0.66	2.27	5
1993.....	1.22	0.36	0.69	2.27	6
1992.....	1.24	0.39	0.70	2.33	6
1991.....	1.33	0.37	0.71	2.41	4
1990.....	1.31	0.44	0.79	2.54	5
1989.....	1.35	0.46	0.86	2.67	3
1988.....	1.38	0.49	0.96	2.82	3
1987.....	1.39	0.51	0.93	2.83	3
1986.....	1.40	0.53	0.92	2.85	3
1985.....	1.40	0.51	1.03	2.93	3
1984.....	1.37	0.52	1.03	2.92	3
1983.....	1.48	0.50	1.06	3.04	3
1982.....	1.34	0.55	1.04	2.94	4
1981.....	1.36	0.53	1.04	2.92	4
1980.....	1.46	0.53	1.13	3.13	3
1979.....	1.42	0.49	1.08	2.98	4
1978.....	1.37	0.48	1.13	2.98	4
1977.....	1.35	0.42	1.09	2.86	4
South Carolina					
2016.....	1.18	0.25	0.79	2.22	7
2015.....	1.21	0.25	0.79	2.25	7
2014.....	1.23	0.25	0.80	2.28	7
2013.....	1.26	0.25	0.80	2.31	7
2012.....	1.28	0.25	0.79	2.32	6
2011.....	1.29	0.25	0.78	2.31	6
2010.....	1.31	0.24	0.76	2.31	6
2009.....	1.35	0.24	0.76	2.34	6
2008.....	1.39	0.24	0.76	2.40	5
2007.....	1.42	0.24	0.76	2.42	5
2006.....	1.45	0.24	0.76	2.45	5
2005.....	1.43	0.24	0.75	2.42	4
2004.....	1.39	0.24	0.76	2.38	5
2003.....	1.38	0.23	0.74	2.35	5
2002.....	1.40	0.22	0.67	2.30	5
2001.....	1.40	0.22	0.65	2.27	5
2000.....	1.49	0.22	0.72	2.43	3

Decile values (1 = highest) apply only to State-level data. Numbers may not sum because of rounding.

**Table 4.** Per capita ethanol consumption for States, census regions, and the United States, 1977–2016. (Gallons of ethanol, based on population ages 14 and older.) (Continued)

State or other geographic area	Per capita consumption				U.S. decile for all beverages
	Beer	Wine	Spirits	All beverages	
1999.....	1.48	0.22	0.72	2.41	3
1998.....	1.44	0.21	0.72	2.37	3
1997.....	1.48	0.20	0.71	2.40	3
1996.....	1.38	0.21	0.71	2.30	4
1995.....	1.33	0.19	0.68	2.20	6
1994.....	1.38	0.17	0.74	2.29	4
1993.....	1.36	0.20	0.75	2.30	5
1992.....	1.34	0.20	0.79	2.33	5
1991.....	1.34	0.22	0.84	2.41	5
1990.....	1.44	0.25	0.92	2.61	4
1989.....	1.39	0.24	0.86	2.49	5
1988.....	1.38	0.26	0.90	2.54	5
1987.....	1.35	0.27	0.89	2.52	6
1986.....	1.31	0.27	0.93	2.52	6
1985.....	1.28	0.25	1.00	2.53	6
1984.....	1.27	0.24	1.01	2.52	7
1983.....	1.27	0.20	1.02	2.49	7
1982.....	1.23	0.20	0.99	2.43	7
1981.....	1.24	0.19	1.04	2.48	7
1980.....	1.22	0.18	1.06	2.45	7
1979.....	1.18	0.16	1.12	2.45	7
1978.....	1.14	0.17	1.15	2.45	7
1977.....	1.12	0.16	1.09	2.37	7
South Dakota					
2016.....	1.46	0.31	1.10	2.87	3
2015.....	1.48	0.29	1.02	2.79	3
2014.....	1.50	0.25	0.99	2.74	3
2013.....	1.52	0.28	1.02	2.81	2
2012.....	1.53	0.26	0.96	2.76	3
2011.....	1.51	0.28	0.97	2.77	2
2010.....	1.53	0.24	0.92	2.69	3
2009.....	1.54	0.22	0.89	2.65	3
2008.....	1.57	0.22	0.87	2.66	3
2007.....	1.52	0.22	0.87	2.61	3
2006.....	1.51	0.19	0.79	2.50	4
2005.....	1.50	0.19	0.83	2.52	3
2004.....	1.51	0.18	0.76	2.45	4
2003.....	1.52	0.16	0.74	2.41	4
2002.....	1.51	0.15	0.67	2.34	4
2001.....	1.49	0.15	0.71	2.35	4
2000.....	1.46	0.15	0.69	2.30	5
1999.....	1.43	0.14	0.70	2.27	5
1998.....	1.41	0.13	0.68	2.23	5
1997.....	1.33	0.13	0.69	2.15	6
1996.....	1.33	0.13	0.68	2.15	6
1995.....	1.35	0.12	0.73	2.21	5
1994.....	1.38	0.12	0.73	2.24	5
1993.....	1.35	0.12	0.73	2.20	6
1992.....	1.37	0.15	0.74	2.26	6
1991.....	1.37	0.15	0.76	2.27	6
1990.....	1.36	0.18	0.80	2.34	6
1989.....	1.30	0.15	0.72	2.17	7
1988.....	1.25	0.16	0.79	2.21	8
1987.....	1.27	0.20	0.81	2.28	8

Decile values (1 = highest) apply only to State-level data. Numbers may not sum because of rounding.

**Table 4.** Per capita ethanol consumption for States, census regions, and the United States, 1977–2016. (Gallons of ethanol, based on population ages 14 and older.) (Continued)

State or other geographic area	Per capita consumption				U.S. decile for all beverages
	Beer	Wine	Spirits	All beverages	
1986.....	1.26	0.20	0.83	2.29	8
1985.....	1.23	0.18	0.95	2.35	8
1984.....	1.28	0.17	0.90	2.35	7
1983.....	1.31	0.17	0.96	2.44	7
1982.....	1.29	0.18	0.97	2.44	7
1981.....	1.31	0.19	1.04	2.54	7
1980.....	1.30	0.18	1.07	2.56	7
1979.....	1.23	0.17	1.04	2.44	7
1978.....	1.20	0.17	1.05	2.42	7
1977.....	1.16	0.17	1.07	2.39	7
Tennessee					
2016.....	1.02	0.33	0.79	2.14	8
2015.....	1.03	0.27	0.76	2.06	9
2014.....	1.04	0.25	0.73	2.02	9
2013.....	1.05	0.25	0.70	2.00	9
2012.....	1.07	0.25	0.68	2.00	9
2011.....	1.13	0.24	0.66	2.04	8
2010.....	1.04	0.22	0.61	1.88	10
2009.....	1.05	0.21	0.57	1.83	10
2008.....	1.10	0.20	0.57	1.87	10
2007.....	1.13	0.20	0.56	1.90	10
2006.....	1.14	0.19	0.56	1.89	9
2005.....	1.19	0.19	0.55	1.92	9
2004.....	1.22	0.18	0.53	1.93	9
2003.....	1.27	0.18	0.52	1.96	8
2002.....	1.17	0.17	0.51	1.86	9
2001.....	1.15	0.16	0.50	1.81	9
2000.....	1.19	0.16	0.51	1.85	9
1999.....	1.19	0.15	0.49	1.83	9
1998.....	1.19	0.15	0.50	1.84	9
1997.....	1.14	0.15	0.50	1.80	9
1996.....	1.14	0.15	0.51	1.80	9
1995.....	1.17	0.15	0.51	1.83	9
1994.....	1.18	0.15	0.53	1.86	9
1993.....	1.20	0.14	0.54	1.87	9
1992.....	1.21	0.14	0.56	1.90	9
1991.....	1.19	0.13	0.54	1.87	9
1990.....	1.22	0.14	0.60	1.96	9
1989.....	1.20	0.14	0.60	1.93	9
1988.....	1.22	0.15	0.61	1.97	9
1987.....	1.19	0.15	0.63	1.97	9
1986.....	1.18	0.16	0.63	1.98	9
1985.....	1.12	0.16	0.68	1.97	9
1984.....	1.11	0.15	0.70	1.97	9
1983.....	1.11	0.14	0.70	1.95	10
1982.....	1.13	0.14	0.70	1.97	10
1981.....	1.14	0.13	0.71	1.98	10
1980.....	1.10	0.12	0.69	1.91	9
1979.....	1.10	0.11	0.70	1.91	10
1978.....	1.12	0.10	0.70	1.93	9
1977.....	1.07	0.10	0.69	1.86	10
Texas					
2016.....	1.30	0.34	0.69	2.34	6

Decile values (1 = highest) apply only to State-level data. Numbers may not sum because of rounding.

**Table 4.** Per capita ethanol consumption for States, census regions, and the United States, 1977–2016. (Gallons of ethanol, based on population ages 14 and older.) (Continued)

State or other geographic area	Per capita consumption				U.S. decile for all beverages
	Beer	Wine	Spirits	All beverages	
2015.....	1.28	0.33	0.67	2.29	6
2014.....	1.25	0.33	0.65	2.24	7
2013.....	1.30	0.32	0.63	2.25	7
2012.....	1.33	0.32	0.63	2.28	7
2011.....	1.35	0.31	0.61	2.27	7
2010.....	1.35	0.29	0.59	2.23	7
2009.....	1.41	0.28	0.58	2.26	7
2008.....	1.43	0.27	0.58	2.28	7
2007.....	1.41	0.27	0.56	2.24	7
2006.....	1.43	0.26	0.55	2.24	7
2005.....	1.43	0.25	0.53	2.20	7
2004.....	1.45	0.24	0.52	2.21	7
2003.....	1.46	0.23	0.51	2.19	7
2002.....	1.49	0.22	0.50	2.21	6
2001.....	1.51	0.21	0.49	2.21	6
2000.....	1.53	0.22	0.50	2.25	5
1999.....	1.54	0.20	0.49	2.23	6
1998.....	1.52	0.20	0.50	2.21	5
1997.....	1.56	0.19	0.47	2.22	5
1996.....	1.57	0.20	0.49	2.26	5
1995.....	1.58	0.19	0.50	2.27	5
1994.....	1.60	0.20	0.51	2.31	4
1993.....	1.60	0.20	0.53	2.33	4
1992.....	1.65	0.24	0.55	2.45	4
1991.....	1.60	0.25	0.55	2.40	5
1990.....	1.64	0.26	0.58	2.47	6
1989.....	1.62	0.27	0.58	2.46	5
1988.....	1.61	0.28	0.59	2.47	6
1987.....	1.62	0.29	0.61	2.52	6
1986.....	1.67	0.31	0.65	2.63	5
1985.....	1.68	0.30	0.73	2.71	5
1984.....	1.73	0.28	0.79	2.80	4
1983.....	1.72	0.27	0.79	2.78	5
1982.....	1.83	0.18	0.84	2.84	4
1981.....	1.84	0.24	0.85	2.94	4
1980.....	1.75	0.22	0.80	2.77	6
1979.....	1.70	0.14	0.84	2.68	6
1978.....	1.64	0.14	0.82	2.60	6
1977.....	1.59	0.14	0.78	2.51	6
Utah					
2016.....	0.63	0.19	0.52	1.34	10
2015.....	0.65	0.20	0.54	1.39	10
2014.....	0.66	0.19	0.52	1.37	10
2013.....	0.67	0.19	0.51	1.36	10
2012.....	0.69	0.19	0.50	1.37	10
2011.....	0.68	0.18	0.49	1.36	10
2010.....	0.70	0.18	0.47	1.35	10
2009.....	0.72	0.17	0.47	1.36	10
2008.....	0.76	0.17	0.47	1.41	10
2007.....	0.77	0.16	0.44	1.38	10
2006.....	0.73	0.16	0.44	1.33	10
2005.....	0.70	0.16	0.41	1.27	10
2004.....	0.76	0.15	0.39	1.30	10
2003.....	0.76	0.14	0.39	1.30	10

Decile values (1 = highest) apply only to State-level data. Numbers may not sum because of rounding.

**Table 4.** Per capita ethanol consumption for States, census regions, and the United States, 1977–2016. (Gallons of ethanol, based on population ages 14 and older.) (Continued)

State or other geographic area	Per capita consumption				U.S. decile for all beverages
	Beer	Wine	Spirits	All beverages	
2002.....	0.77	0.14	0.39	1.30	10
2001.....	0.77	0.14	0.39	1.30	10
2000.....	0.75	0.14	0.40	1.29	10
1999.....	0.74	0.13	0.38	1.25	10
1998.....	0.77	0.13	0.37	1.27	10
1997.....	0.75	0.13	0.39	1.27	10
1996.....	0.73	0.13	0.37	1.23	10
1995.....	0.71	0.11	0.37	1.19	10
1994.....	0.76	0.09	0.38	1.24	10
1993.....	0.78	0.11	0.39	1.28	10
1992.....	0.79	0.12	0.42	1.33	10
1991.....	0.80	0.12	0.43	1.34	10
1990.....	0.80	0.12	0.46	1.39	10
1989.....	0.81	0.13	0.47	1.41	10
1988.....	0.82	0.14	0.48	1.45	10
1987.....	0.84	0.15	0.49	1.49	10
1986.....	0.88	0.16	0.52	1.57	10
1985.....	0.89	0.15	0.53	1.57	10
1984.....	0.89	0.14	0.52	1.55	10
1983.....	0.89	0.14	0.51	1.54	10
1982.....	1.01	0.15	0.55	1.70	10
1981.....	1.02	0.15	0.59	1.75	10
1980.....	0.96	0.14	0.60	1.70	10
1979.....	0.94	0.15	0.59	1.68	10
1978.....	0.93	0.14	0.59	1.66	10
1977.....	0.94	0.13	0.57	1.64	10
Vermont					
2016.....	1.56	0.79	0.73	3.08	2
2015.....	1.57	0.78	0.73	3.07	2
2014.....	1.55	0.78	0.72	3.05	2
2013.....	1.54	0.74	0.72	3.00	2
2012.....	1.51	0.70	0.71	2.92	2
2011.....	1.46	0.68	0.71	2.85	2
2010.....	1.44	0.64	0.71	2.80	2
2009.....	1.43	0.64	0.70	2.77	2
2008.....	1.45	0.63	0.71	2.79	2
2007.....	1.46	0.62	0.70	2.78	2
2006.....	1.45	0.60	0.69	2.73	2
2005.....	1.44	0.57	0.68	2.69	2
2004.....	1.34	0.55	0.66	2.56	3
2003.....	1.34	0.52	0.65	2.51	3
2002.....	1.34	0.51	0.63	2.48	3
2001.....	1.34	0.48	0.63	2.45	3
2000.....	1.32	0.49	0.63	2.43	3
1999.....	1.32	0.48	0.62	2.42	3
1998.....	1.31	0.46	0.62	2.39	3
1997.....	1.29	0.45	0.63	2.37	3
1996.....	1.35	0.43	0.64	2.42	3
1995.....	1.28	0.41	0.66	2.35	3
1994.....	1.34	0.42	0.74	2.50	3
1993.....	1.34	0.44	0.74	2.52	2
1992.....	1.35	0.44	0.78	2.57	3
1991.....	1.41	0.46	0.82	2.69	2
1990.....	1.47	0.48	0.85	2.80	2

Decile values (1 = highest) apply only to State-level data. Numbers may not sum because of rounding.

**Table 4.** Per capita ethanol consumption for States, census regions, and the United States, 1977–2016. (Gallons of ethanol, based on population ages 14 and older.) (Continued)

State or other geographic area	Per capita consumption				U.S. decile for all beverages
	Beer	Wine	Spirits	All beverages	
1989.....	1.49	0.53	0.89	2.91	2
1988.....	1.54	0.57	0.95	3.05	2
1987.....	1.58	0.59	1.00	3.18	1
1986.....	1.57	0.60	1.06	3.22	1
1985.....	1.51	0.56	1.10	3.17	2
1984.....	1.49	0.49	1.16	3.15	2
1983.....	1.53	0.50	1.20	3.23	2
1982.....	1.48	0.50	1.24	3.22	2
1981.....	1.49	0.50	1.34	3.32	2
1980.....	1.43	0.48	1.38	3.29	2
1979.....	1.53	0.46	1.47	3.46	1
1978.....	1.50	0.46	1.56	3.52	1
1977.....	1.40	0.44	1.55	3.38	1
Virginia					
2016.....	1.00	0.49	0.66	2.14	8
2015.....	1.00	0.48	0.65	2.13	8
2014.....	1.01	0.47	0.63	2.11	8
2013.....	1.02	0.46	0.62	2.10	8
2012.....	1.04	0.46	0.62	2.12	8
2011.....	1.05	0.46	0.61	2.12	8
2010.....	1.08	0.44	0.60	2.12	8
2009.....	1.10	0.42	0.58	2.11	8
2008.....	1.12	0.42	0.58	2.12	8
2007.....	1.13	0.41	0.57	2.10	8
2006.....	1.13	0.39	0.56	2.08	8
2005.....	1.13	0.38	0.54	2.05	8
2004.....	1.14	0.37	0.53	2.04	8
2003.....	1.14	0.36	0.52	2.02	8
2002.....	1.15	0.34	0.51	2.00	8
2001.....	1.15	0.32	0.50	1.97	8
2000.....	1.16	0.31	0.49	1.97	8
1999.....	1.18	0.32	0.48	1.97	8
1998.....	1.17	0.30	0.47	1.95	8
1997.....	1.11	0.29	0.48	1.88	8
1996.....	1.12	0.30	0.49	1.91	8
1995.....	1.15	0.29	0.50	1.94	8
1994.....	1.20	0.27	0.51	1.99	8
1993.....	1.24	0.27	0.54	2.05	8
1992.....	1.25	0.28	0.57	2.10	7
1991.....	1.20	0.28	0.58	2.06	8
1990.....	1.25	0.30	0.62	2.18	8
1989.....	1.23	0.31	0.65	2.18	7
1988.....	1.31	0.25	0.67	2.24	7
1987.....	1.39	0.25	0.70	2.35	7
1986.....	1.52	0.27	0.73	2.52	6
1985.....	1.45	0.30	0.79	2.54	6
1984.....	1.46	0.29	0.80	2.55	6
1983.....	1.47	0.27	0.82	2.56	6
1982.....	1.46	0.27	0.86	2.59	6
1981.....	1.23	0.27	0.89	2.39	7
1980.....	1.23	0.25	0.90	2.38	8
1979.....	1.21	0.25	0.90	2.36	8
1978.....	1.20	0.21	0.89	2.30	8

Decile values (1 = highest) apply only to State-level data. Numbers may not sum because of rounding.

**Table 4.** Per capita ethanol consumption for States, census regions, and the United States, 1977–2016. (Gallons of ethanol, based on population ages 14 and older.) (Continued)

State or other geographic area	Per capita consumption				U.S. decile for all beverages
	Beer	Wine	Spirits	All beverages	
1977.....	1.17	0.21	0.89	2.27	7
Washington					
2016.....	0.96	0.52	0.78	2.26	7
2015.....	0.97	0.53	0.77	2.26	7
2014.....	0.97	0.53	0.76	2.26	7
2013.....	0.95	0.53	0.76	2.24	7
2012.....	0.96	0.53	0.76	2.25	7
2011.....	0.97	0.54	0.75	2.25	7
2010.....	1.01	0.52	0.73	2.25	7
2009.....	1.10	0.51	0.74	2.34	6
2008.....	1.11	0.50	0.75	2.37	6
2007.....	1.14	0.50	0.74	2.38	6
2006.....	1.08	0.48	0.72	2.28	6
2005.....	1.11	0.55	0.68	2.34	5
2004.....	1.11	0.53	0.66	2.30	6
2003.....	1.07	0.47	0.68	2.21	6
2002.....	1.09	0.43	0.66	2.17	7
2001.....	1.09	0.40	0.65	2.15	7
2000.....	1.11	0.41	0.66	2.18	6
1999.....	1.11	0.40	0.63	2.14	7
1998.....	1.12	0.39	0.63	2.14	7
1997.....	1.09	0.42	0.63	2.15	6
1996.....	1.09	0.40	0.63	2.12	6
1995.....	1.17	0.40	0.63	2.20	6
1994.....	1.18	0.39	0.65	2.23	6
1993.....	1.19	0.39	0.69	2.27	5
1992.....	1.26	0.46	0.72	2.44	4
1991.....	1.23	0.43	0.73	2.39	5
1990.....	1.27	0.46	0.76	2.49	5
1989.....	1.25	0.47	0.76	2.47	5
1988.....	1.23	0.50	0.77	2.51	6
1987.....	1.24	0.56	0.79	2.59	5
1986.....	1.23	0.61	0.82	2.66	5
1985.....	1.21	0.59	0.87	2.67	5
1984.....	1.23	0.57	0.91	2.70	5
1983.....	1.29	0.54	0.94	2.76	5
1982.....	1.32	0.52	0.98	2.83	5
1981.....	1.38	0.54	1.04	2.96	4
1980.....	1.51	0.51	1.08	3.10	4
1979.....	1.39	0.47	1.08	2.94	4
1978.....	1.36	0.47	1.07	2.91	4
1977.....	1.34	0.45	1.06	2.85	4
West Virginia					
2016.....	1.19	0.11	0.46	1.76	10
2015.....	1.21	0.11	0.47	1.78	10
2014.....	1.21	0.10	0.47	1.78	10
2013.....	1.24	0.10	0.46	1.80	10
2012.....	1.24	0.10	0.47	1.80	10
2011.....	1.22	0.10	0.46	1.78	10
2010.....	1.23	0.10	0.44	1.78	10
2009.....	1.23	0.10	0.44	1.77	10
2008.....	1.25	0.10	0.43	1.79	10
2007.....	1.23	0.10	0.42	1.75	10

Decile values (1 = highest) apply only to State-level data. Numbers may not sum because of rounding.



**Table 4.** Per capita ethanol consumption for States, census regions, and the United States, 1977–2016. (Gallons of ethanol, based on population ages 14 and older.) (Continued)

State or other geographic area	Per capita consumption				U.S. decile for all beverages
	Beer	Wine	Spirits	All beverages	
2006.....	1.21	0.10	0.41	1.72	10
2005.....	1.23	0.10	0.40	1.73	10
2004.....	1.25	0.10	0.39	1.75	10
2003.....	1.23	0.10	0.38	1.72	10
2002.....	1.26	0.10	0.38	1.74	10
2001.....	1.25	0.10	0.37	1.72	10
2000.....	1.24	0.10	0.36	1.70	10
1999.....	1.22	0.10	0.37	1.69	10
1998.....	1.18	0.09	0.36	1.64	10
1997.....	1.12	0.09	0.37	1.58	10
1996.....	1.12	0.09	0.37	1.58	10
1995.....	1.12	0.08	0.38	1.58	10
1994.....	1.17	0.08	0.39	1.64	10
1993.....	1.18	0.08	0.40	1.67	10
1992.....	1.16	0.09	0.41	1.66	10
1991.....	1.18	0.09	0.43	1.70	10
1990.....	1.20	0.10	0.42	1.72	10
1989.....	1.15	0.11	0.39	1.65	10
1988.....	1.15	0.12	0.41	1.68	10
1987.....	1.13	0.13	0.41	1.68	10
1986.....	1.12	0.13	0.42	1.67	10
1985.....	1.13	0.13	0.42	1.69	10
1984.....	1.13	0.12	0.45	1.70	10
1983.....	1.14	0.13	0.49	1.76	10
1982.....	1.11	0.14	0.55	1.80	10
1981.....	1.05	0.14	0.65	1.85	10
1980.....	1.00	0.09	0.72	1.81	10
1979.....	0.94	0.09	0.75	1.77	10
1978.....	0.93	0.09	0.76	1.78	10
1977.....	0.95	0.09	0.76	1.80	10
Wisconsin					
2016.....	1.36	0.40	1.22	2.98	2
2015.....	1.39	0.39	1.20	2.98	2
2014.....	1.41	0.38	1.18	2.97	2
2013.....	1.45	0.38	1.17	2.99	2
2012.....	1.46	0.37	1.18	3.02	2
2011.....	1.46	0.37	1.16	2.98	2
2010.....	1.49	0.32	1.13	2.94	2
2009.....	1.49	0.31	1.16	2.96	2
2008.....	1.55	0.34	1.13	3.01	1
2007.....	1.56	0.33	1.11	3.00	1
2006.....	1.58	0.32	1.09	2.99	1
2005.....	1.58	0.31	1.07	2.95	1
2004.....	1.53	0.30	1.02	2.85	1
2003.....	1.53	0.29	1.00	2.82	2
2002.....	1.56	0.28	0.98	2.82	2
2001.....	1.54	0.26	0.95	2.75	2
2000.....	1.53	0.27	0.95	2.76	1
1999.....	1.53	0.26	0.92	2.72	2
1998.....	1.58	0.26	0.90	2.74	1
1997.....	1.57	0.25	0.89	2.71	1
1996.....	1.53	0.24	0.88	2.65	1
1995.....	1.64	0.23	0.87	2.73	1
1994.....	1.58	0.22	0.91	2.72	2

Decile values (1 = highest) apply only to State-level data. Numbers may not sum because of rounding.

**Table 4.** Per capita ethanol consumption for States, census regions, and the United States, 1977–2016. (Gallons of ethanol, based on population ages 14 and older.) (Continued)

State or other geographic area	Per capita consumption				U.S. decile for all beverages
	Beer	Wine	Spirits	All beverages	
1993.....	1.59	0.22	0.89	2.71	1
1992.....	1.59	0.25	0.90	2.74	2
1991.....	1.65	0.27	0.84	2.76	1
1990.....	1.74	0.31	1.03	3.07	1
1989.....	1.72	0.31	0.96	2.99	1
1988.....	1.76	0.33	0.95	3.05	2
1987.....	1.80	0.36	0.98	3.14	2
1986.....	1.88	0.34	0.96	3.18	2
1985.....	1.83	0.32	1.06	3.20	1
1984.....	1.87	0.31	1.03	3.21	1
1983.....	1.94	0.34	1.07	3.35	2
1982.....	1.95	0.30	1.05	3.30	2
1981.....	1.96	0.32	1.21	3.48	1
1980.....	1.95	0.31	1.19	3.45	1
1979.....	1.92	0.28	1.19	3.39	2
1978.....	1.83	0.28	1.20	3.31	2
1977.....	1.81	0.27	1.28	3.37	1
Wyoming					
2016.....	1.18	0.32	1.17	2.67	4
2015.....	1.24	0.31	1.18	2.74	3
2014.....	1.25	0.31	1.16	2.72	3
2013.....	1.24	0.29	1.13	2.67	4
2012.....	1.32	0.28	1.13	2.73	3
2011.....	1.29	0.27	1.10	2.66	3
2010.....	1.33	0.27	1.06	2.66	3
2009.....	1.40	0.27	1.06	2.73	2
2008.....	1.50	0.27	1.09	2.87	2
2007.....	1.46	0.27	1.07	2.80	2
2006.....	1.44	0.26	1.03	2.72	2
2005.....	1.20	0.25	0.96	2.41	5
2004.....	1.42	0.24	0.92	2.58	2
2003.....	1.70	0.23	0.90	2.84	1
2002.....	1.46	0.23	0.88	2.57	2
2001.....	1.44	0.22	0.88	2.53	2
2000.....	1.42	0.22	0.86	2.50	3
1999.....	1.41	0.22	0.84	2.47	2
1998.....	1.37	0.17	0.81	2.36	3
1997.....	1.41	0.17	0.81	2.40	3
1996.....	1.35	0.17	0.81	2.33	4
1995.....	1.34	0.16	0.80	2.29	4
1994.....	1.42	0.18	0.83	2.43	3
1993.....	1.40	0.19	0.86	2.45	3
1992.....	1.44	0.20	0.91	2.56	3
1991.....	1.45	0.20	0.90	2.56	3
1990.....	1.48	0.22	0.93	2.63	3
1989.....	1.41	0.23	0.86	2.50	5
1988.....	1.45	0.24	0.87	2.56	5
1987.....	1.51	0.25	0.90	2.66	5
1986.....	1.51	0.27	0.96	2.73	4
1985.....	1.59	0.25	1.05	2.89	3
1984.....	1.61	0.23	1.06	2.89	4
1983.....	1.68	0.22	1.11	3.01	4
1982.....	1.78	0.24	1.20	3.22	3
1981.....	1.91	0.24	1.27	3.43	2

Decile values (1 = highest) apply only to State-level data. Numbers may not sum because of rounding.

**Table 4.** Per capita ethanol consumption for States, census regions, and the United States, 1977–2016. (Gallons of ethanol, based on population ages 14 and older.) (Continued)

State or other geographic area	Per capita consumption				U.S. decile for all beverages
	Beer	Wine	Spirits	All beverages	
1980.....	1.85	0.24	1.32	3.41	2
1979.....	1.86	0.22	1.30	3.39	2
1978.....	1.81	0.22	1.35	3.38	2
1977.....	1.78	0.20	1.31	3.29	2
Northeast region					
2016.....	1.03	0.52	0.86	2.42	
2015.....	1.03	0.51	0.84	2.39	
2014.....	1.03	0.53	0.84	2.39	
2013.....	1.05	0.52	0.83	2.40	
2012.....	1.06	0.51	0.82	2.39	
2011.....	1.05	0.50	0.80	2.36	
2010.....	1.06	0.49	0.78	2.33	
2009.....	1.07	0.48	0.77	2.31	
2008.....	1.09	0.47	0.76	2.31	
2007.....	1.09	0.47	0.75	2.31	
2006.....	1.07	0.45	0.73	2.25	
2005.....	1.07	0.44	0.72	2.22	
2004.....	1.07	0.43	0.70	2.20	
2003.....	1.08	0.41	0.68	2.17	
2002.....	1.10	0.40	0.66	2.16	
2001.....	1.10	0.38	0.64	2.13	
2000.....	1.08	0.38	0.66	2.12	
1999.....	1.07	0.38	0.63	2.08	
1998.....	1.07	0.37	0.61	2.05	
1997.....	1.07	0.36	0.63	2.06	
1996.....	1.07	0.36	0.64	2.06	
1995.....	1.11	0.35	0.64	2.11	
1994.....	1.11	0.34	0.67	2.12	
1993.....	1.13	0.34	0.68	2.15	
1992.....	1.14	0.35	0.72	2.21	
1991.....	1.19	0.34	0.73	2.26	
1990.....	1.23	0.38	0.80	2.41	
1989.....	1.22	0.39	0.84	2.44	
1988.....	1.25	0.40	0.86	2.51	
1987.....	1.25	0.43	0.91	2.59	
1986.....	1.24	0.44	0.93	2.62	
1985.....	1.25	0.43	0.98	2.66	
1984.....	1.25	0.43	1.01	2.70	
1983.....	1.31	0.43	1.03	2.76	
1982.....	1.31	0.43	1.06	2.80	
1981.....	1.31	0.42	1.07	2.80	
1980.....	1.33	0.40	1.09	2.83	
1979.....	1.29	0.38	1.09	2.76	
1978.....	1.26	0.36	1.10	2.73	
1977.....	1.25	0.34	1.10	2.69	
Midwest region					
2016.....	1.14	0.35	0.87	2.37	
2015.....	1.15	0.35	0.86	2.36	
2014.....	1.16	0.34	0.84	2.35	
2013.....	1.17	0.34	0.83	2.34	
2012.....	1.20	0.33	0.82	2.35	
2011.....	1.20	0.32	0.79	2.31	
2010.....	1.23	0.30	0.77	2.30	

Decile values (1 = highest) apply only to State-level data. Numbers may not sum because of rounding.

**Table 4.** Per capita ethanol consumption for States, census regions, and the United States, 1977–2016. (Gallons of ethanol, based on population ages 14 and older.) (Continued)

State or other geographic area	Per capita consumption				U.S. decile for all beverages
	Beer	Wine	Spirits	All beverages	
2009.....	1.25	0.30	0.76	2.32	
2008.....	1.27	0.29	0.76	2.33	
2007.....	1.28	0.30	0.74	2.32	
2006.....	1.27	0.28	0.72	2.27	
2005.....	1.27	0.27	0.71	2.25	
2004.....	1.28	0.26	0.68	2.22	
2003.....	1.28	0.26	0.68	2.23	
2002.....	1.30	0.25	0.64	2.19	
2001.....	1.29	0.23	0.65	2.17	
2000.....	1.29	0.24	0.63	2.16	
1999.....	1.29	0.24	0.63	2.15	
1998.....	1.28	0.23	0.63	2.14	
1997.....	1.26	0.23	0.62	2.11	
1996.....	1.28	0.23	0.62	2.12	
1995.....	1.29	0.22	0.62	2.12	
1994.....	1.30	0.22	0.63	2.14	
1993.....	1.30	0.22	0.67	2.18	
1992.....	1.31	0.23	0.68	2.21	
1991.....	1.35	0.23	0.67	2.25	
1990.....	1.38	0.26	0.74	2.37	
1989.....	1.36	0.26	0.72	2.35	
1988.....	1.38	0.29	0.75	2.41	
1987.....	1.38	0.30	0.77	2.45	
1986.....	1.38	0.30	0.78	2.46	
1985.....	1.37	0.28	0.84	2.49	
1984.....	1.40	0.27	0.84	2.52	
1983.....	1.42	0.25	0.87	2.54	
1982.....	1.42	0.27	0.88	2.57	
1981.....	1.42	0.26	0.93	2.61	
1980.....	1.42	0.24	0.96	2.63	
1979.....	1.40	0.23	0.95	2.58	
1978.....	1.35	0.22	0.95	2.52	
1977.....	1.32	0.21	0.96	2.49	
South region					
2016.....	1.11	0.37	0.79	2.27	
2015.....	1.12	0.36	0.77	2.24	
2014.....	1.11	0.35	0.75	2.22	
2013.....	1.16	0.34	0.74	2.24	
2012.....	1.18	0.34	0.73	2.25	
2011.....	1.16	0.33	0.71	2.21	
2010.....	1.17	0.32	0.70	2.19	
2009.....	1.21	0.31	0.69	2.21	
2008.....	1.24	0.31	0.68	2.23	
2007.....	1.26	0.31	0.68	2.24	
2006.....	1.27	0.30	0.67	2.23	
2005.....	1.26	0.29	0.65	2.20	
2004.....	1.27	0.29	0.64	2.19	
2003.....	1.27	0.27	0.64	2.18	
2002.....	1.28	0.26	0.62	2.16	
2001.....	1.29	0.25	0.60	2.14	
2000.....	1.30	0.25	0.61	2.17	
1999.....	1.30	0.25	0.60	2.15	
1998.....	1.30	0.24	0.60	2.13	
1997.....	1.30	0.23	0.60	2.13	

Decile values (1 = highest) apply only to State-level data. Numbers may not sum because of rounding.

**Table 4.** Per capita ethanol consumption for States, census regions, and the United States, 1977–2016. (Gallons of ethanol, based on population ages 14 and older.) (Continued)

State or other geographic area	Per capita consumption				U.S. decile for all beverages
	Beer	Wine	Spirits	All beverages	
1996.....	1.30	0.23	0.61	2.15	
1995.....	1.29	0.22	0.61	2.12	
1994.....	1.31	0.22	0.64	2.16	
1993.....	1.33	0.22	0.66	2.20	
1992.....	1.33	0.23	0.69	2.26	
1991.....	1.31	0.23	0.69	2.23	
1990.....	1.36	0.26	0.74	2.36	
1989.....	1.33	0.26	0.74	2.33	
1988.....	1.34	0.27	0.74	2.35	
1987.....	1.34	0.27	0.77	2.39	
1986.....	1.36	0.28	0.79	2.43	
1985.....	1.34	0.27	0.86	2.47	
1984.....	1.34	0.27	0.90	2.51	
1983.....	1.36	0.25	0.91	2.52	
1982.....	1.37	0.23	0.94	2.54	
1981.....	1.36	0.24	0.98	2.58	
1980.....	1.30	0.23	0.97	2.50	
1979.....	1.27	0.20	0.99	2.46	
1978.....	1.25	0.19	1.00	2.44	
1977.....	1.21	0.19	0.98	2.37	
West region					
2016.....	1.03	0.55	0.84	2.42	
2015.....	1.05	0.52	0.82	2.38	
2014.....	1.06	0.55	0.80	2.41	
2013.....	1.04	0.55	0.81	2.41	
2012.....	1.05	0.57	0.81	2.42	
2011.....	1.04	0.54	0.78	2.36	
2010.....	1.06	0.48	0.76	2.31	
2009.....	1.11	0.52	0.76	2.38	
2008.....	1.15	0.51	0.76	2.42	
2007.....	1.17	0.49	0.76	2.42	
2006.....	1.13	0.51	0.76	2.40	
2005.....	1.14	0.50	0.73	2.36	
2004.....	1.17	0.48	0.71	2.35	
2003.....	1.17	0.46	0.69	2.32	
2002.....	1.18	0.44	0.68	2.30	
2001.....	1.19	0.43	0.68	2.30	
2000.....	1.21	0.43	0.68	2.32	
1999.....	1.20	0.43	0.65	2.29	
1998.....	1.19	0.43	0.64	2.26	
1997.....	1.20	0.44	0.65	2.30	
1996.....	1.22	0.43	0.67	2.32	
1995.....	1.23	0.40	0.66	2.29	
1994.....	1.20	0.41	0.70	2.31	
1993.....	1.26	0.42	0.72	2.39	
1992.....	1.33	0.45	0.76	2.54	
1991.....	1.30	0.44	0.76	2.50	
1990.....	1.37	0.50	0.84	2.71	
1989.....	1.35	0.51	0.84	2.69	
1988.....	1.36	0.56	0.86	2.79	
1987.....	1.38	0.62	0.89	2.89	
1986.....	1.39	0.65	0.92	2.96	
1985.....	1.37	0.65	0.99	3.01	
1984.....	1.40	0.61	1.03	3.04	

Decile values (1 = highest) apply only to State-level data. Numbers may not sum because of rounding.

**Table 4.** Per capita ethanol consumption for States, census regions, and the United States, 1977–2016. (Gallons of ethanol, based on population ages 14 and older.) (Continued)

State or other geographic area	Per capita consumption				U.S. decile for all beverages
	Beer	Wine	Spirits	All beverages	
1983.....	1.42	0.61	1.07	3.10	
1982.....	1.44	0.59	1.10	3.13	
1981.....	1.49	0.60	1.16	3.24	
1980.....	1.47	0.59	1.19	3.24	
1979.....	1.45	0.56	1.20	3.22	
1978.....	1.39	0.55	1.23	3.18	
1977.....	1.35	0.53	1.20	3.08	
U.S. total					
2016.....	1.08	0.44	0.83	2.35	
2015.....	1.09	0.42	0.81	2.33	
2014.....	1.10	0.43	0.80	2.32	
2013.....	1.12	0.42	0.79	2.33	
2012.....	1.13	0.42	0.78	2.34	
2011.....	1.12	0.41	0.76	2.29	
2010.....	1.14	0.38	0.74	2.26	
2009.....	1.17	0.39	0.73	2.29	
2008.....	1.20	0.38	0.73	2.31	
2007.....	1.21	0.38	0.72	2.31	
2006.....	1.20	0.37	0.71	2.28	
2005.....	1.20	0.36	0.70	2.25	
2004.....	1.21	0.35	0.68	2.24	
2003.....	1.21	0.34	0.67	2.22	
2002.....	1.23	0.33	0.64	2.20	
2001.....	1.23	0.31	0.64	2.18	
2000.....	1.23	0.31	0.64	2.19	
1999.....	1.23	0.31	0.63	2.17	
1998.....	1.22	0.30	0.62	2.15	
1997.....	1.22	0.30	0.62	2.15	
1996.....	1.23	0.30	0.63	2.16	
1995.....	1.24	0.29	0.63	2.15	
1994.....	1.25	0.28	0.65	2.18	
1993.....	1.26	0.28	0.68	2.23	
1992.....	1.29	0.30	0.71	2.30	
1991.....	1.29	0.30	0.71	2.30	
1990.....	1.34	0.33	0.77	2.45	
1989.....	1.32	0.34	0.78	2.43	
1988.....	1.33	0.36	0.79	2.49	
1987.....	1.34	0.38	0.83	2.55	
1986.....	1.35	0.39	0.84	2.58	
1985.....	1.33	0.38	0.91	2.62	
1984.....	1.35	0.37	0.94	2.65	
1983.....	1.37	0.36	0.96	2.69	
1982.....	1.38	0.36	0.98	2.72	
1981.....	1.39	0.35	1.02	2.76	
1980.....	1.37	0.34	1.04	2.75	
1979.....	1.34	0.31	1.04	2.70	
1978.....	1.30	0.30	1.05	2.66	
1977.....	1.27	0.29	1.04	2.60	

Decile values (1 = highest) apply only to State-level data. Numbers may not sum because of rounding.