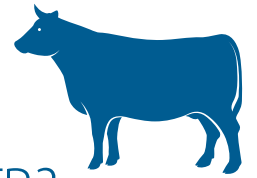


Bovine Tuberculosis in Wildlife

What is bovine tuberculosis?

Bovine tuberculosis – or bovine TB – is a contagious chronic bacterial infection. It primarily affects domestic cattle.



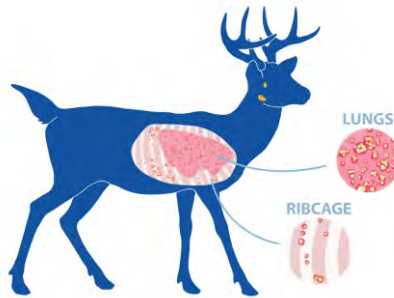
Can deer and other wildlife contract bovine TB?

It is rare, but bovine TB can spread to wild animals such as bison, elk, moose and deer.

Bovine TB has never been detected in wildlife in Saskatchewan.

How can I tell if a wild animal has bovine TB?

An animal infected with bovine TB may have lesions in their lungs, rib cage or chest cavity that hunters will notice when field dressing the animal. The lesions can vary in size and texture, and will be white, tan or yellow in colour. An infected animal may also have enlarged lymph nodes.



Reporting bovine TB



If you find bovine TB-like lesions, take a photo if possible and contact the Ministry of Environment at **1-800-567-4224** or the Canadian Wildlife Health Cooperative at **306-966-5815**.

How can I test game animals?

Hunters harvesting game in **wildlife management zones 37 and 48** have been asked to submit samples to test for bovine TB. The process to submit a sample is the same as it is for chronic wasting disease (CWD).

Visit cwdsk.ca to register and receive your unique tracking number. Double bag your sample and **bring it to the nearest CWD drop off location**.



Use safe field dressing practices

Hunters should always use routine hygiene precautions when field dressing wild game to prevent transmission of bovine TB or other diseases.

- **Avoid direct contact** with blood, feces and respiratory secretions of all wild game.
- **Wash your hands, your knives and other equipment regularly** – use soap and warm water, followed up with a 10 per cent solution of household bleach.
- **Don't rub your eyes**, eat, drink or smoke while cleaning game.
- **Wear dish gloves** or latex/plastic gloves when handling and processing game.
- **Work in a well-ventilated area**. If that isn't possible, wearing a mask will reduce your exposure to aerosols.
- **Cook meat thoroughly.**



Help support our wildlife health program.
Test your game animal for bovine tuberculosis.