

New Central Library **FINAL DESIGN REPORT**

Located on Treaty Six Territory
and the Homeland of the Métis.

COMMUNITY CONSULTATION

We committed to building a new central library with, not for, the Saskatoon community. This meant involving the community in meaningful ways throughout the new central library planning and design process, resulting in a library that reflects the traditions and aspirations of our incredible community.

We began in 2018 when we invited the community to share their vision for Saskatoon's new central library with us.

The community vision was:

1. A welcoming and accessible hub.
2. Has space for a large and diverse collection of materials.
3. Has a variety of spaces to meet the needs of the community.
4. A place for learning and innovation.

Between January 2021 and February 2022, we engaged the community in a year-long consultation process to understand their needs and wants for a new library. We used various methods to gather ideas and inspiration, including pop-up events, online surveys, discussion forums, community workshops, kitchen table kits and stakeholder meetings. We involved the community in each of the four phases of the library's design. At the end of each phase, we produced a What We Heard report to share themes that emerged during consultations. All consultation activities were available on our website, saskatoonlibrary.ca.

In addition to broad community consultation, we also created 13 volunteer Resident Advisory Committees. These committees consisted of community leaders, advocates, experts and community members with lived experience. They supported the project team by reviewing concepts and plans, providing feedback and proposing solutions to design challenges, as requested. We met with each advisory committee four times over 14 months.

The Resident Advisory Committees were:

- First Nation & Métis Knowledge Keepers
- Accessibility
- Business
- Children & Caregivers
- Creation & Innovation
- Employment & Education
- Inclusion
- Local History
- Older Adults
- Poverty & Homelessness
- Program & Service Partnerships
- Public Health & Safety
- Teens

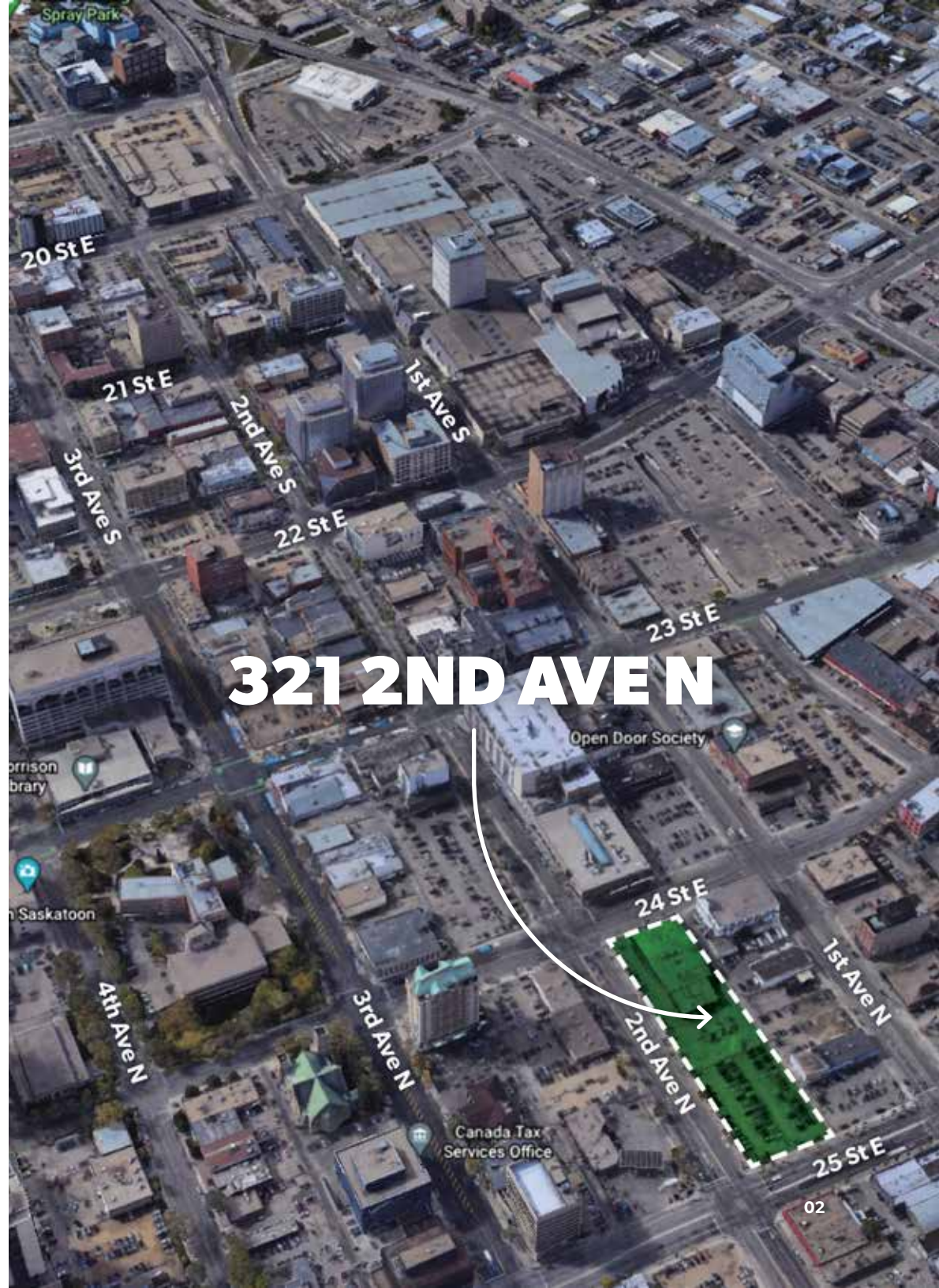
We appreciate the thousands of Saskatoon residents who contributed their ideas and inspiration.

Thank You:

We are particularly grateful to the members of our Resident Advisory Committees who volunteered to bravely share with us their stories, personal challenges and dreams for themselves and their community. During these discussions, we gained invaluable feedback from people who truly have our community's best interests at heart. Despite some inevitable differences in perspective, opinions and approaches, a love for both the library and Saskatoon was clear in every conversation. We were moved by your passion and desire to make the new central library a welcoming place for everyone. We learned so much from you. This library, and our community as a whole, are much better for your contributions.

LOCATION

The new central library will be located in downtown Saskatoon at 321 2nd Avenue North on a 0.656 ha rectangular parcel of land bordered by 24th and 25th Street East. The library is approximately 136,000 square feet over four levels, providing much-needed space for our growing community.



INSPIRATION

The library's design draws inspiration from traditional First Nation and Métis architecture.

The First Nation tipi is a simple, elegant design constructed from lodge poles tied together and enclosed by animal hides that allow diffused light to transfer.

The exterior of the library is evocative of the tipi, using a combination of transparent, translucent and opaque glass panels to ensure there are ever-present views of the beautiful Saskatchewan sky.

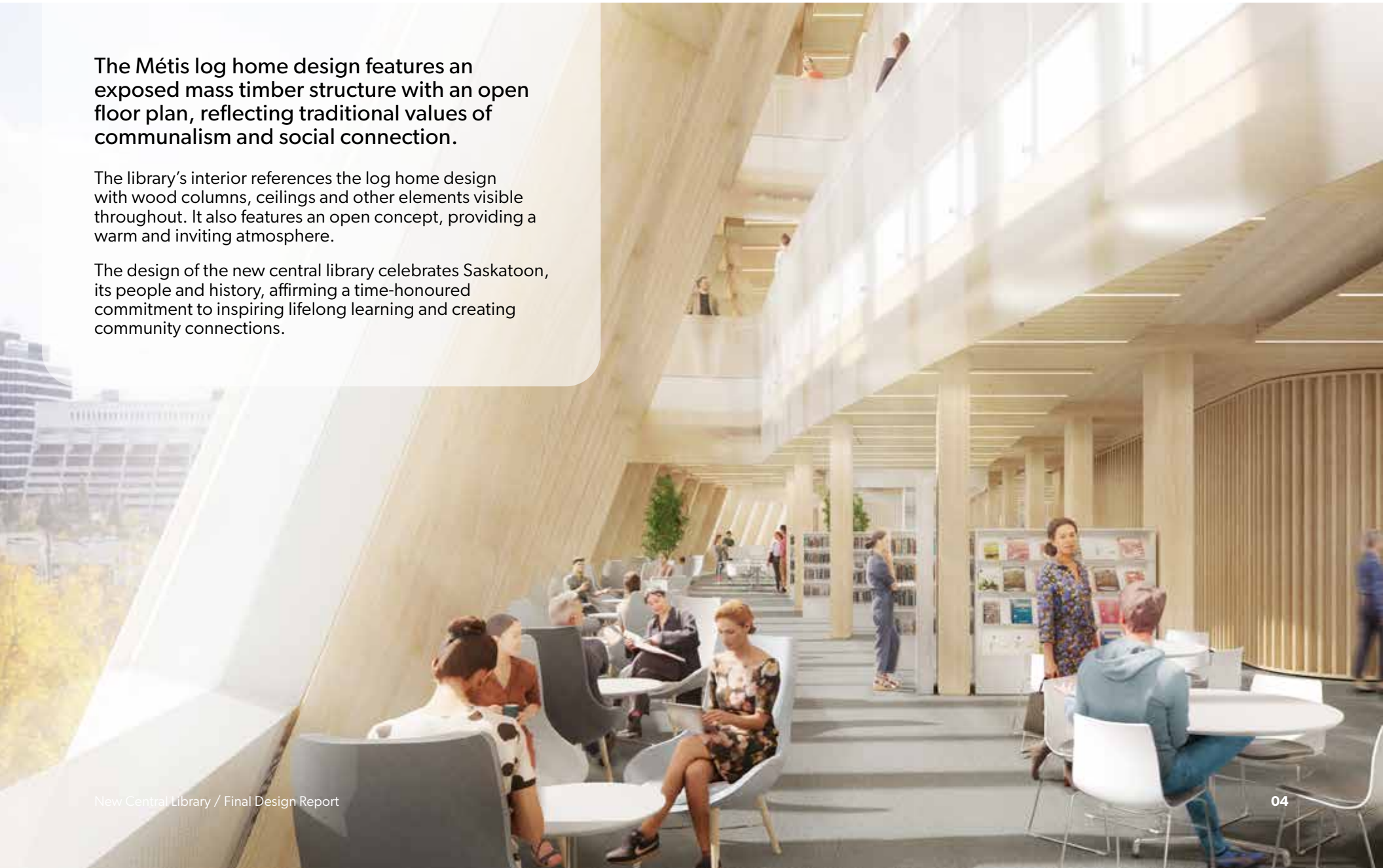


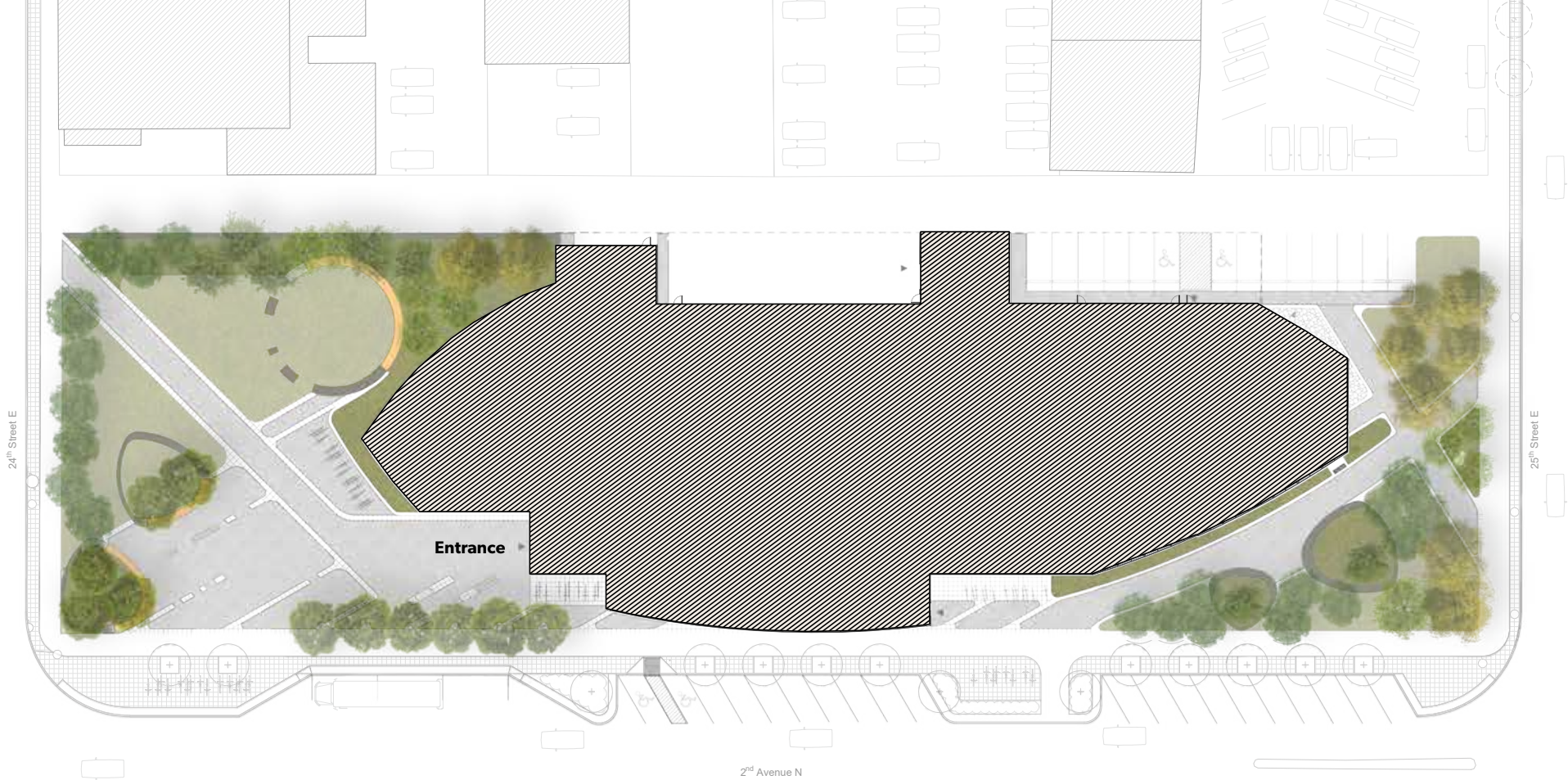
INSPIRATION

The Métis log home design features an exposed mass timber structure with an open floor plan, reflecting traditional values of communalism and social connection.

The library's interior references the log home design with wood columns, ceilings and other elements visible throughout. It also features an open concept, providing a warm and inviting atmosphere.

The design of the new central library celebrates Saskatoon, its people and history, affirming a time-honoured commitment to inspiring lifelong learning and creating community connections.





LANDSCAPING & OUTDOOR PLAZA

The library's design and the placement of the building onsite follows Indigenous principles to connect buildings to their natural environment.

The unique landscape surrounding Saskatoon provides inspiration for site design. The wetlands and knob and kettle topography, formed on the land following the retreat of glaciers, inform the basic shapes and structures found within the site. These shapes inspire the basis of seating structures, raised planters and paving accents.

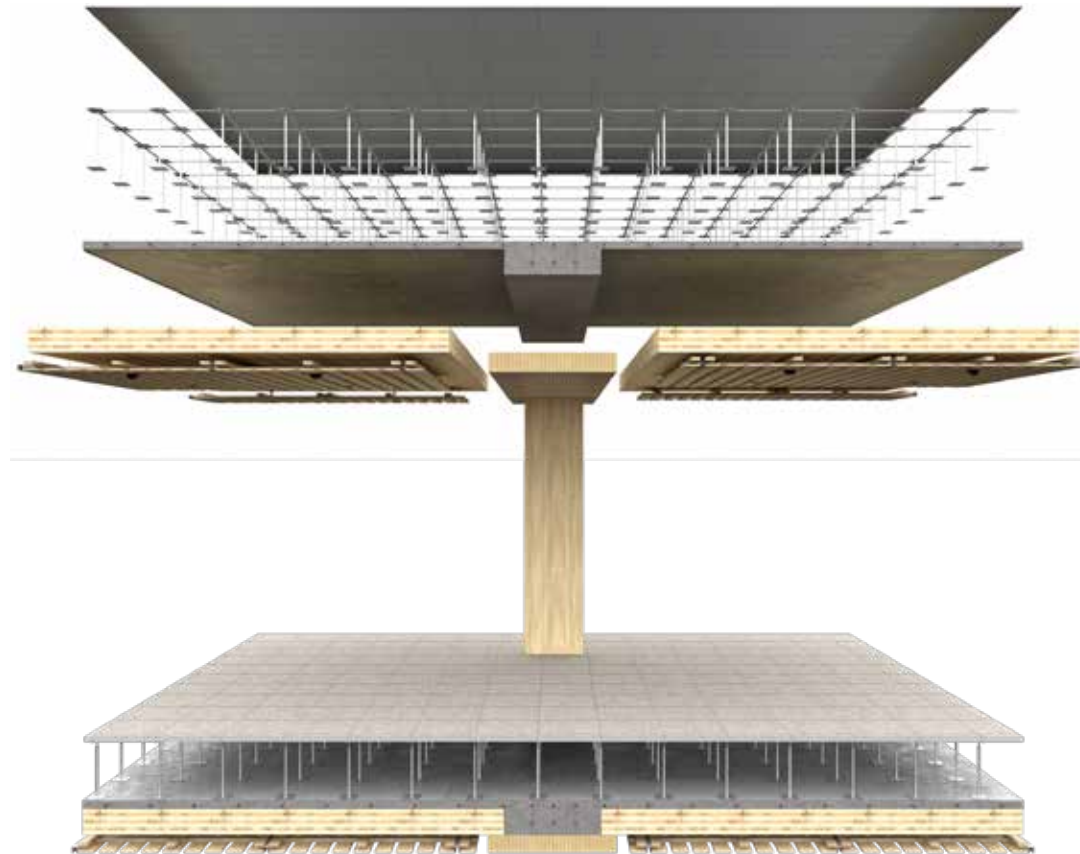
Large grassy areas add greenspace to downtown Saskatoon. The landscape also includes a gathering space surrounded by a raised seating area to allow for events and open spaces where tipis can be erected. The paved plaza is a flexible, multi-programmable space designed to provide accessible access to the main entrance and to accommodate special events.

Throughout the plaza and other hard surfaces are pedestrian and cyclist amenities, including bike racks, a bike repair station, water fountain and pathways that connect to and through the landscape.

STRUCTURE

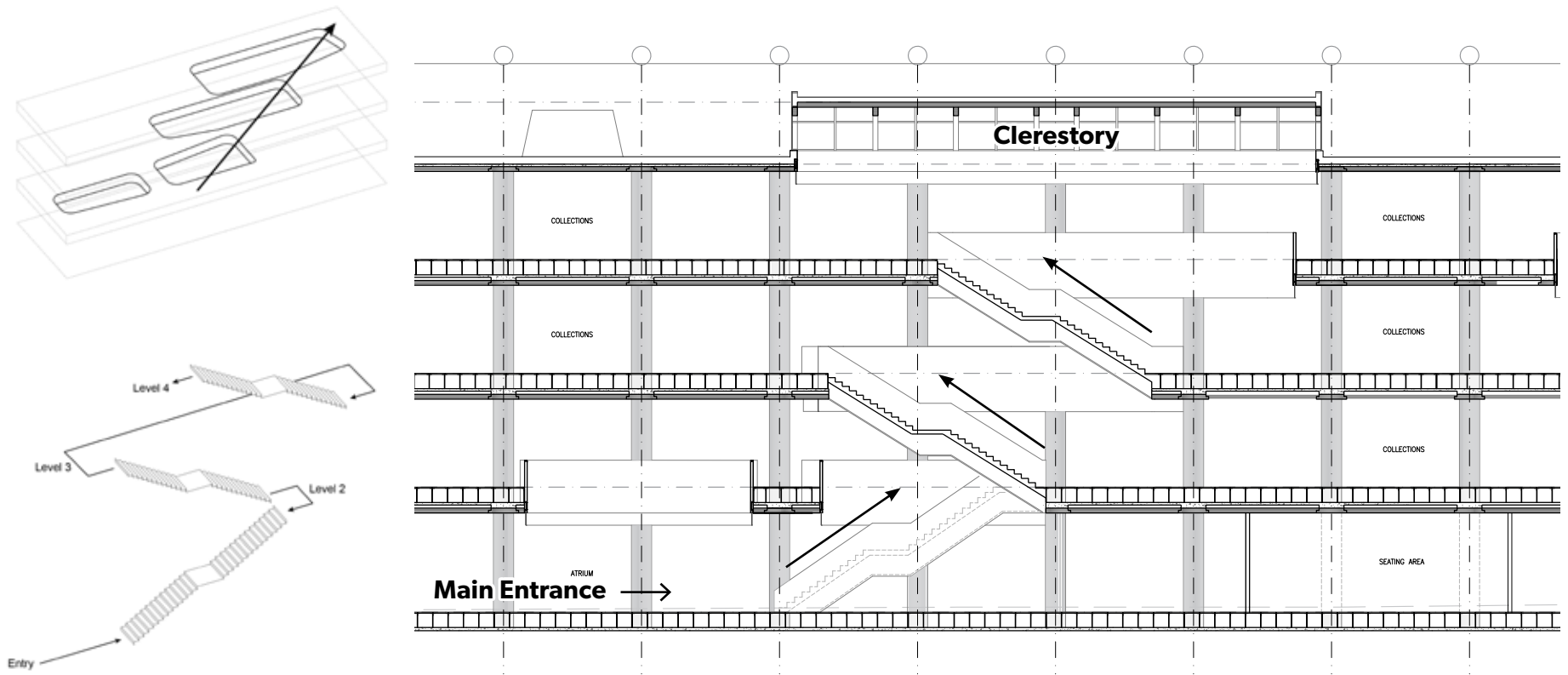
The façade has a shingling effect with the glass panels on the exterior. The interior is supported by a secondary wood and steel structure and features exposed wood columns.

The primary structural system will be a hybrid concrete structure on the main and lower levels. The second to top floors will be a cross-laminated timber and concrete system supported by glue-laminated wood columns. A raised-floor system will be used to distribute mechanical and electrical services, reducing the need for bulkheads and allowing for displacement ventilation. This is similar to the stratification of air within a tipi, building on the principle of hot air rising and exhausting at a higher elevation.



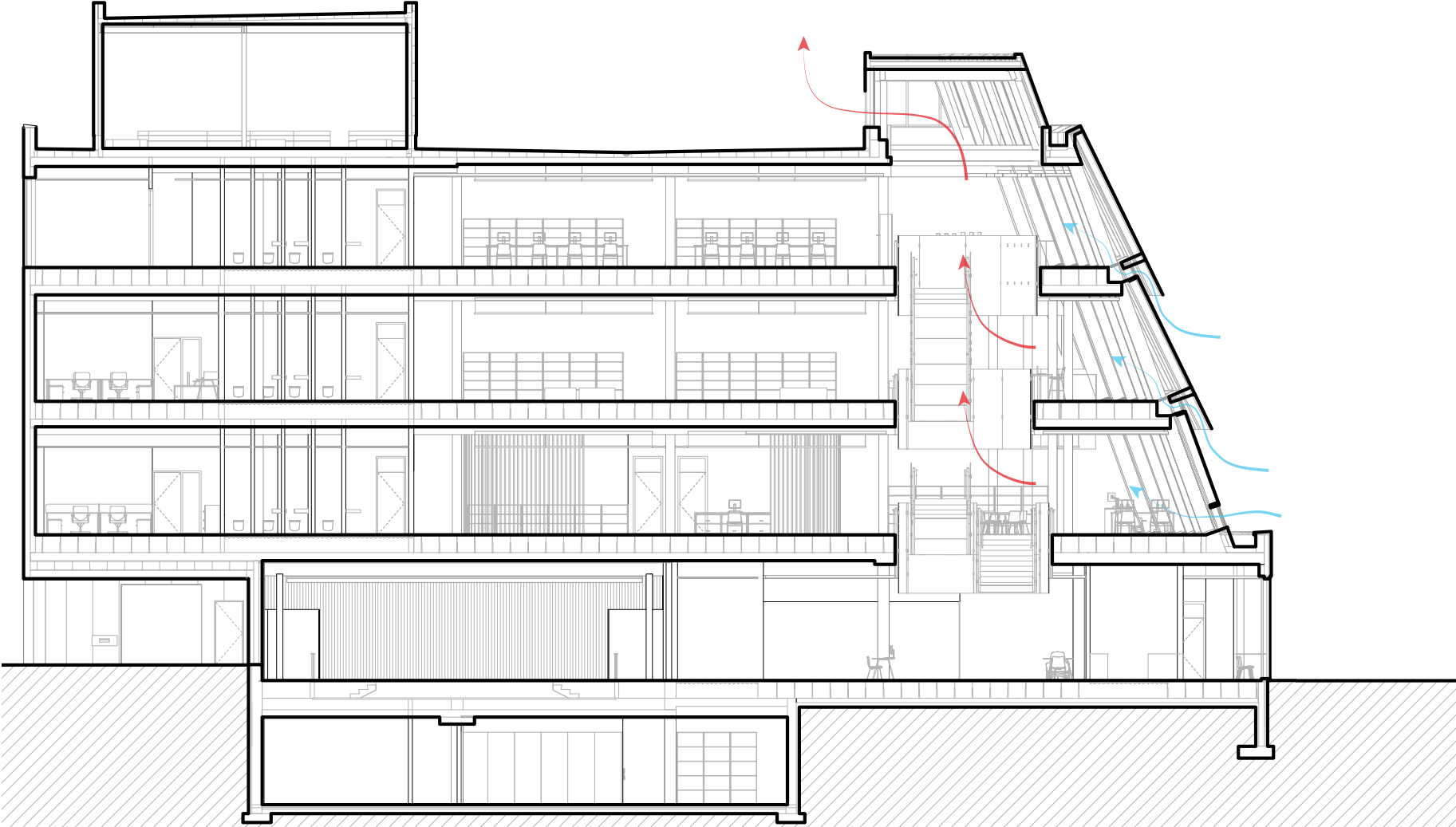
ATRIUM/CENTRAL STAIRCASE

The atrium is unique in that it does not have the same opening on each floor. Instead, the atrium meanders up through the building, giving it a more cascading experience as you move through it. The combined effect gives the central staircase a dynamic view. Above the atrium is a clerestory window that brings natural light into the building. The windows in the clerestory allow for natural ventilation in the spring, summer and fall.



BUILDING CROSS SECTION

The building cross section illustrates the structural system, atrium/central staircase and exterior wall system. The general planning concept for the building is to have seating around the windows; collections in the centre of the building; amenities such as elevators, stairs and washrooms, print and copy stations and quick check machines centrally located on each floor; and enclosed programming rooms and employee workspace along the back of the building. The building also includes a partial lower level, below grade, for materials sorting and storage and mechanical equipment on the roof.



ACCESSIBILITY FEATURES

We are aiming to achieve Rick Hansen Foundation Accessibility Certification™ to ensure we create a barrier-free space.

Some of the accessible features include:

- Audio induction assist in programming rooms to support people with hearing disabilities.
- Integrated wheelchair-accessible seating in all areas of the library.
- Accessible shelving throughout.
- Accessible washroom stalls and universal washrooms with adult change tables.
- A calm-down zone in the children's area for kids who are overstimulated.
- Power-assist doors.
- Seating throughout so patrons can take breaks as they explore the library.
- Attention to sound attenuation throughout.





SUSTAINABILITY FEATURES

Leadership in Energy and Environmental Design (LEED®) is a green building rating system used to evaluate sustainable high-performing buildings by the Canada Green Building Council. Through LEED® certification, the design team is dedicated to incorporating green building strategies into the design, construction and long-term operations of the library.

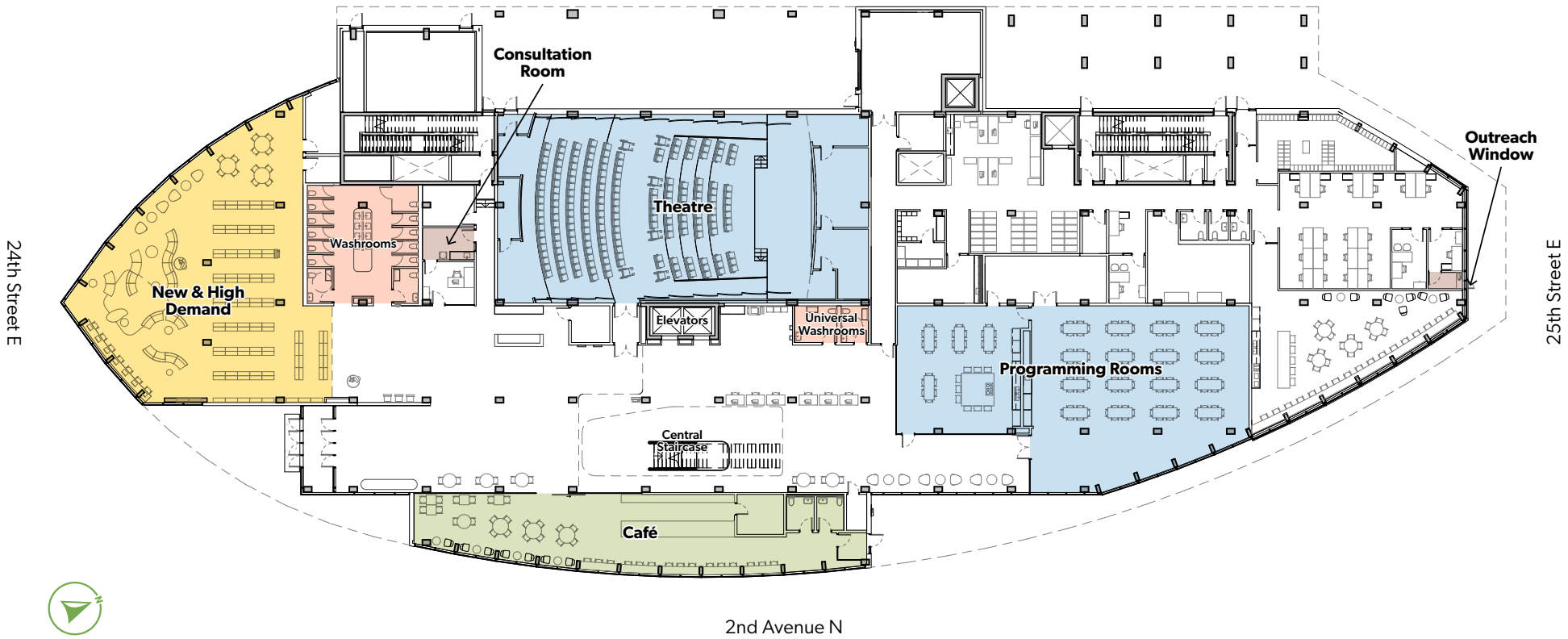
Some of the sustainable features include:

- Triple-pane windows.
- Ceramic frit to reduce solar gain and prevent bird strikes.
- Natural ventilation.
- Energy-efficient lighting and fixtures.
- Wood, which is a sustainable material due to its low-embodied energy and carbon-sequestering qualities.
- Daylight sensors will be installed in areas of natural light to reduce lighting loads.
- The raised access floor and low-pressure underfloor air distribution system provides a higher degree of thermal comfort for occupants and makes future renovations much easier.

MAIN LEVEL

The main entrance is located on 2nd Avenue North near 24th Street East. Level one is a busy hub home to the theatre, programming rooms, a holds pick-up area, the new and high-demand collection, and the main circulation service point. Retractable partitions enable access to the foyer/entrance, public washrooms and the auditorium for partial library operations outside of regular opening hours. There is a covered Outreach Services Window along 25th Street East.

This level also contains a café along 2nd Avenue, which will be operated independently of the library.

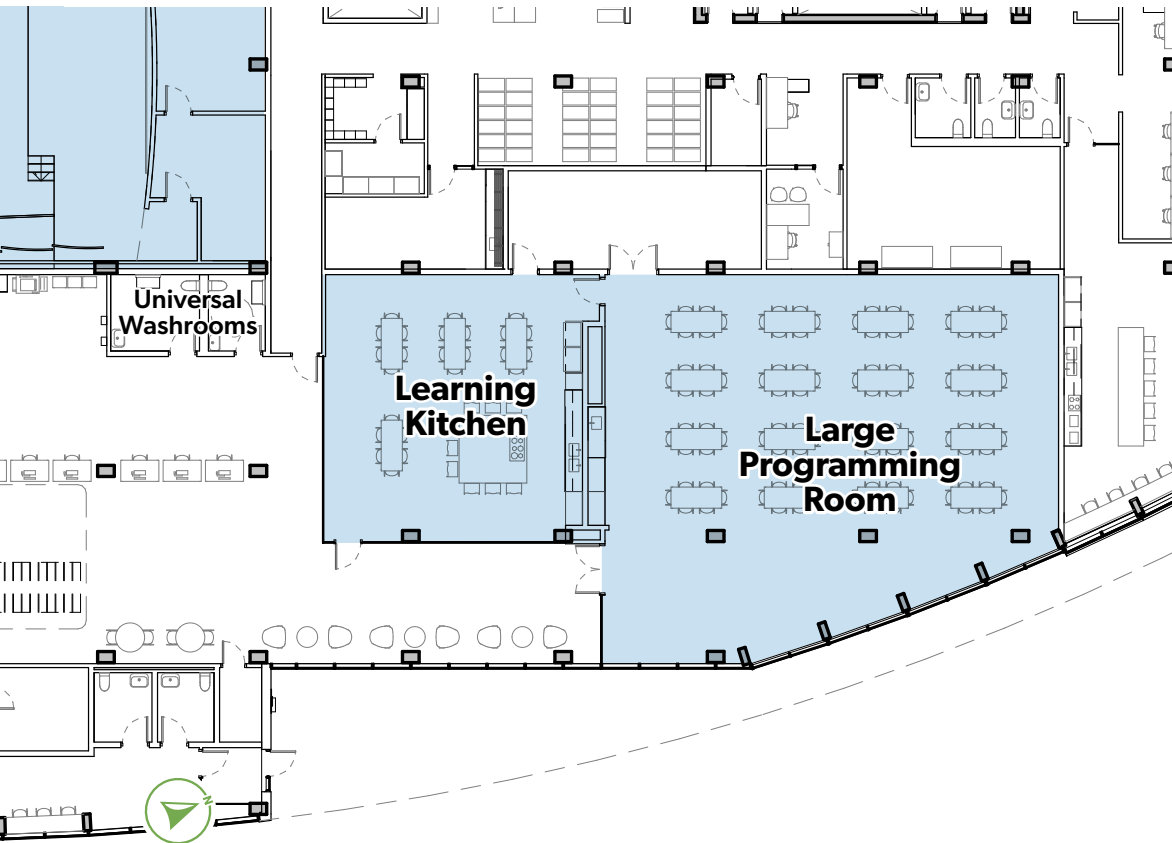


MAIN LEVEL PROGRAMMING ROOMS

The main level contains numerous programming rooms:

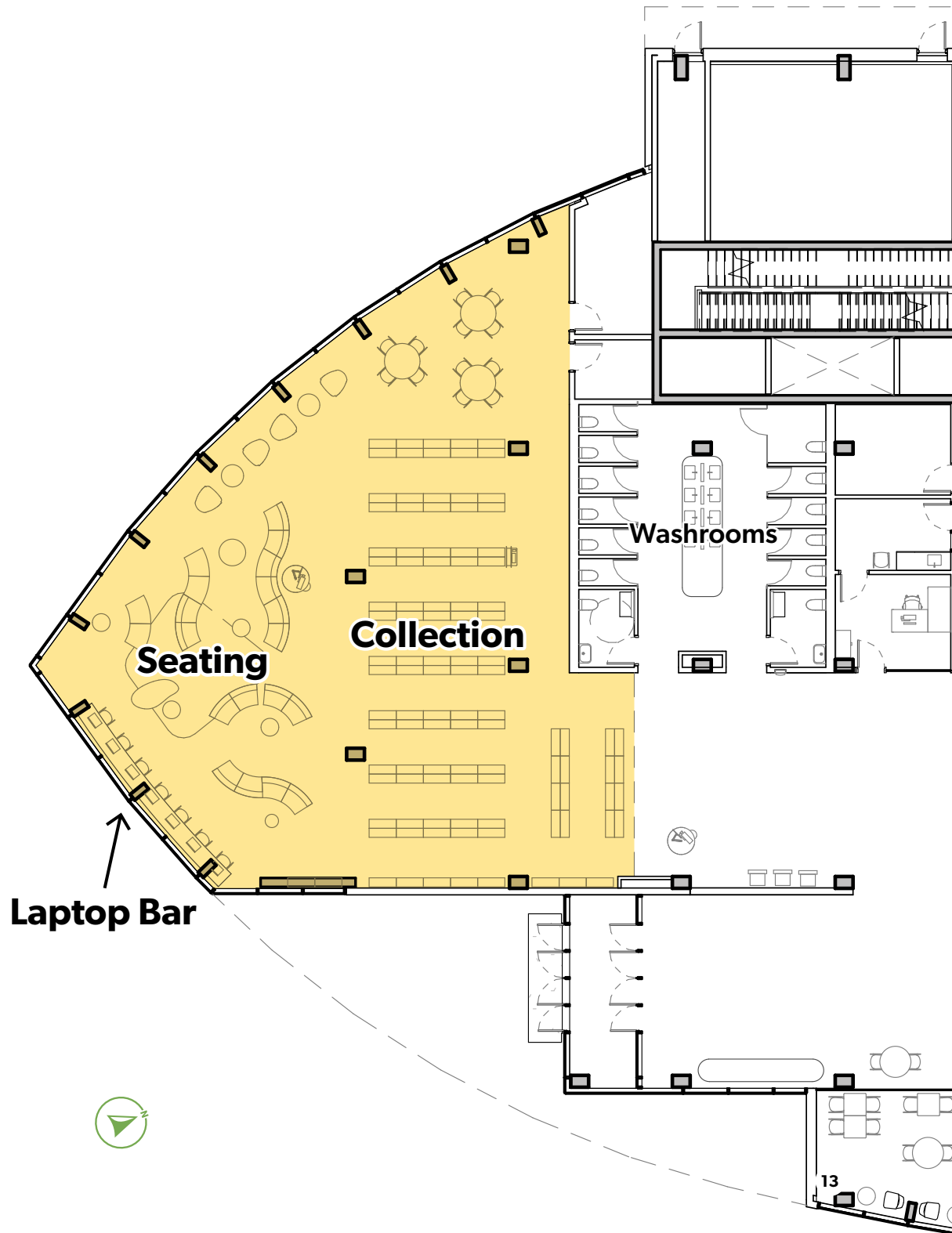
- Large programming room.
- Learning kitchen.
- Theatre (see page 14).

Adjacent to the programming rooms are two universal washrooms. In addition, there is a large print and copy area with laptop loaning and public computers.



MAIN LEVEL NEW & POPULAR MATERIALS

Featuring seating and views looking out to the exterior plaza, this space has the new and popular materials collection, computers and a laptop bar. It is adjacent to the main circulation service point, holds pick-up area and quick-check machines.





MAIN LEVEL **THEATRE**

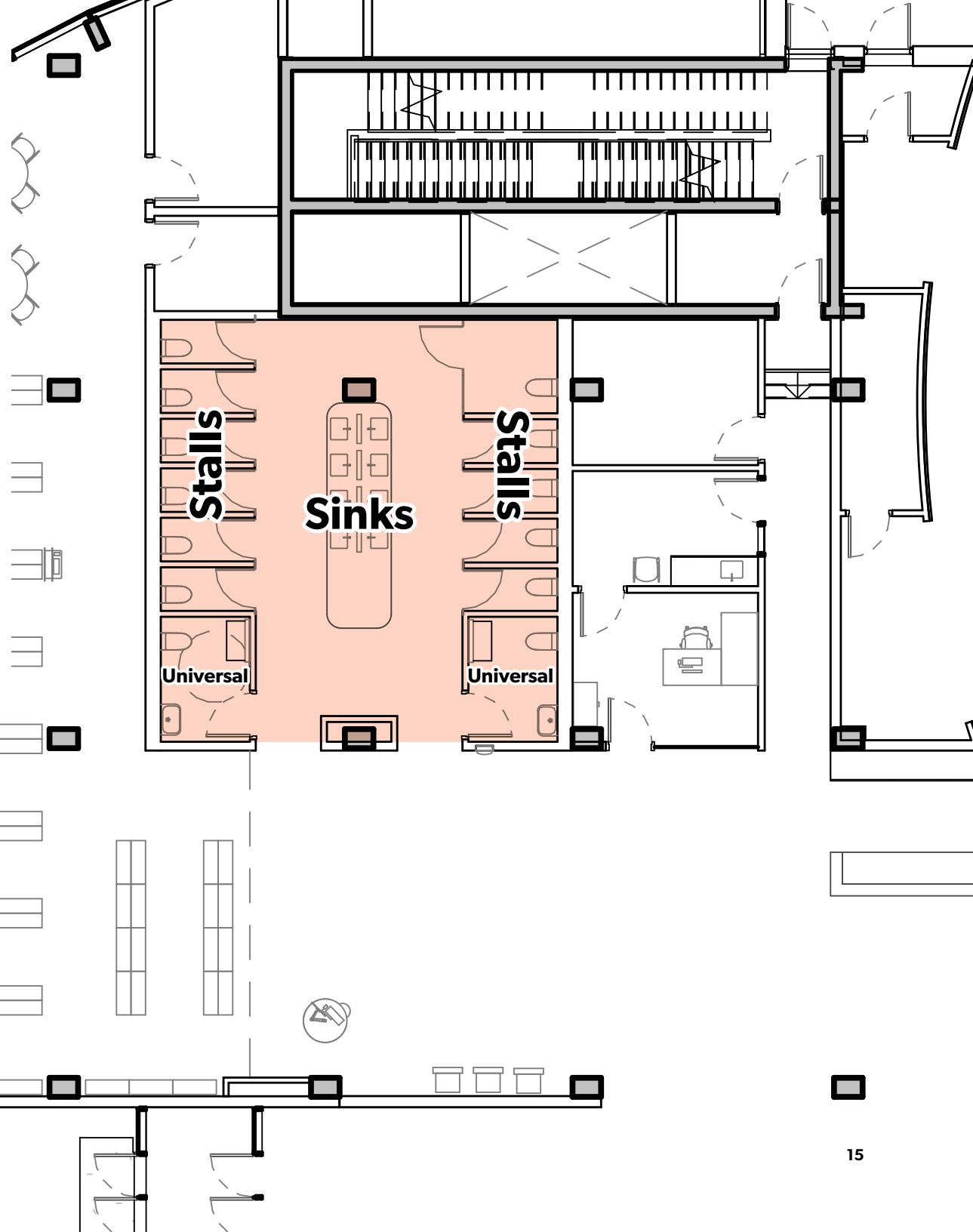
In the theatre, beautiful wood screens and curved walls will welcome guests in this unique and striking space. With excellent views of the stage from every seat, the theatre is fully accessible and has audio assistance for people with hearing disabilities.

WASHROOMS

The new central library has gender-neutral washrooms. There are washrooms on each level of the library. Each block of washrooms has two large entrances and individual closed-door stalls, including one accessible stall. There are common sinks and grooming areas. Also in each block are also two universal washrooms (individual toilet and sink), one of which includes an adult change table.

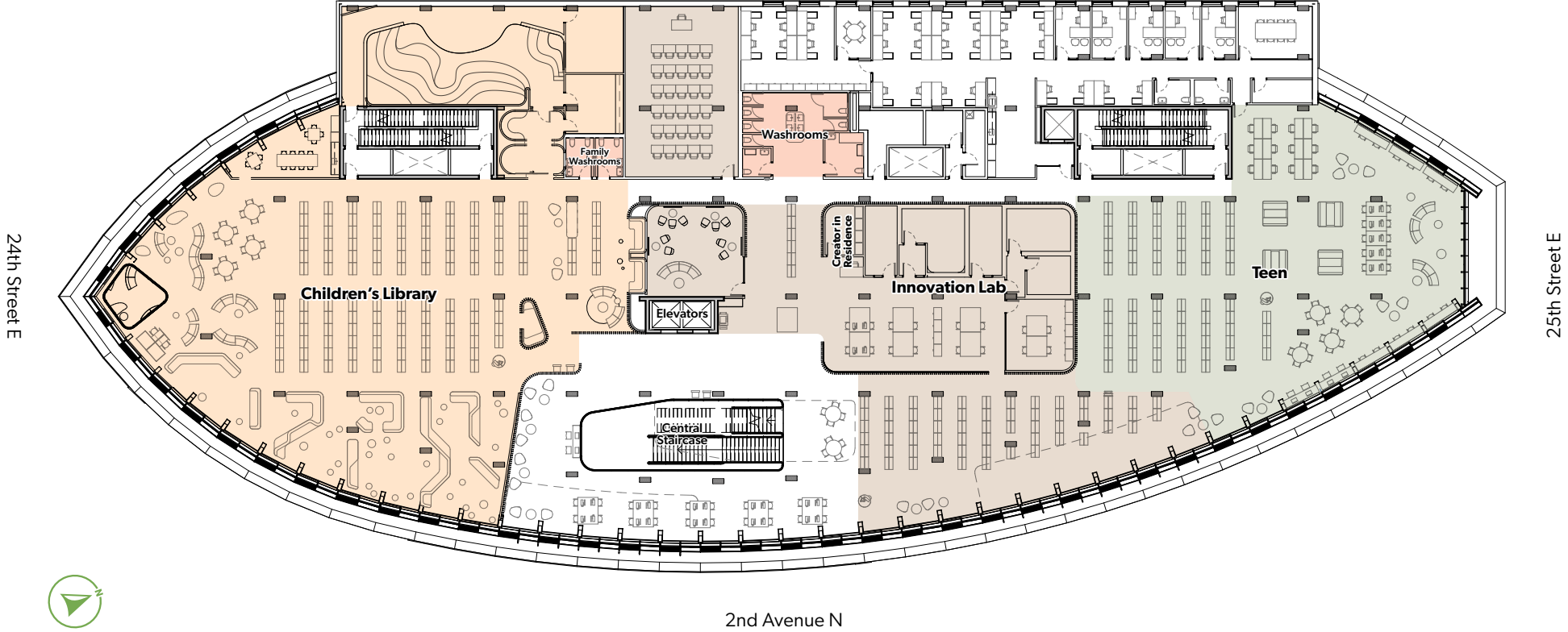
There are also two family washrooms in the children's area on the second level and two universal washrooms on the main floor adjacent to the programming rooms.

The universal washrooms are available for anyone to use.



LEVEL 2

The components on Level 2 are the Children's Library, the Innovation Lab and the Teen Area.



LEVEL 2 CHILDREN'S LIBRARY

The Children's Library is a key component of the New Central Library and is prominently located on Level 2. Directly accessible from the main public stairs and elevators, the Children's Library is oriented south to get maximum natural light with excellent views.

The Children's Library is partially separated from the adjacent components while still being highly visible and easily accessible from these components.

The Children's Library contains a large play area, a story room, an art lab, family washrooms, a calm down zone, reading nooks and book displays.





LEVEL 2

CHILDREN'S LIBRARY STORY ROOM

Walking through the door of the children's story room, children and their caregivers will be transported to a whimsical world that inspires imagination and wonder. The design is inspired by The Hundred Acre Wood, which is the fictional land featured in Winnie the Pooh stories. The forest concept also relates to Indigenous cultures, which place nature at the centre of the value system. This space is designed to inspire creativity and imagination in our young visitors.

LEVEL 2

CHILDREN'S LIBRARY PLAY AREA

Intended for children ages 0–10, this screen-free play zone will focus on providing hands-on and interactive play activities. A series of nooks with age-specific activities include a STEAM wall, role playing, LEGO® blocks, floor games and manipulatives.

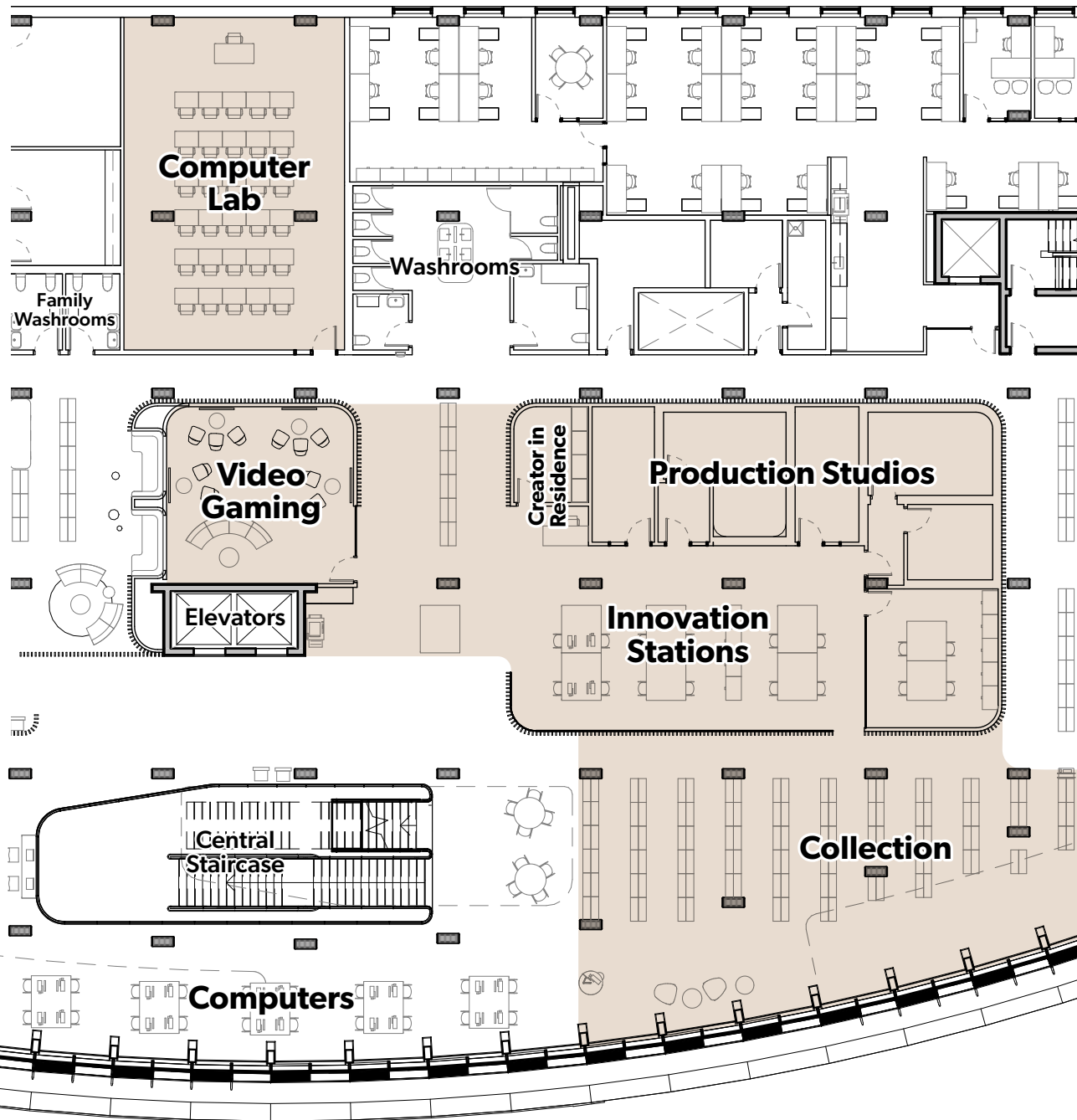


LEVEL 2 INNOVATION LAB

The Innovation Lab is a technology-focused, animated hub located in the centre of Level 2. The labs are enclosed by a wood screen that offers various levels of transparency and enclosure. A service point is centrally located between all of the creative spaces.

In addition to being home to the Creator in Residence office, the Innovation Lab is a group of hands-on technology-focused spaces that includes:

- Audio production studio.
- Audio recording booth.
- Video production studio.
- Post-production studio.
- Video gaming.



LEVEL 2 INNOVATION LAB



Innovation Stations

These creative spaces provide access to tools and equipment including 3D printing, sewing machines, graphic design computers and digitization tools to convert film, slides, negatives, VHS, CD and DVD to digital formats.



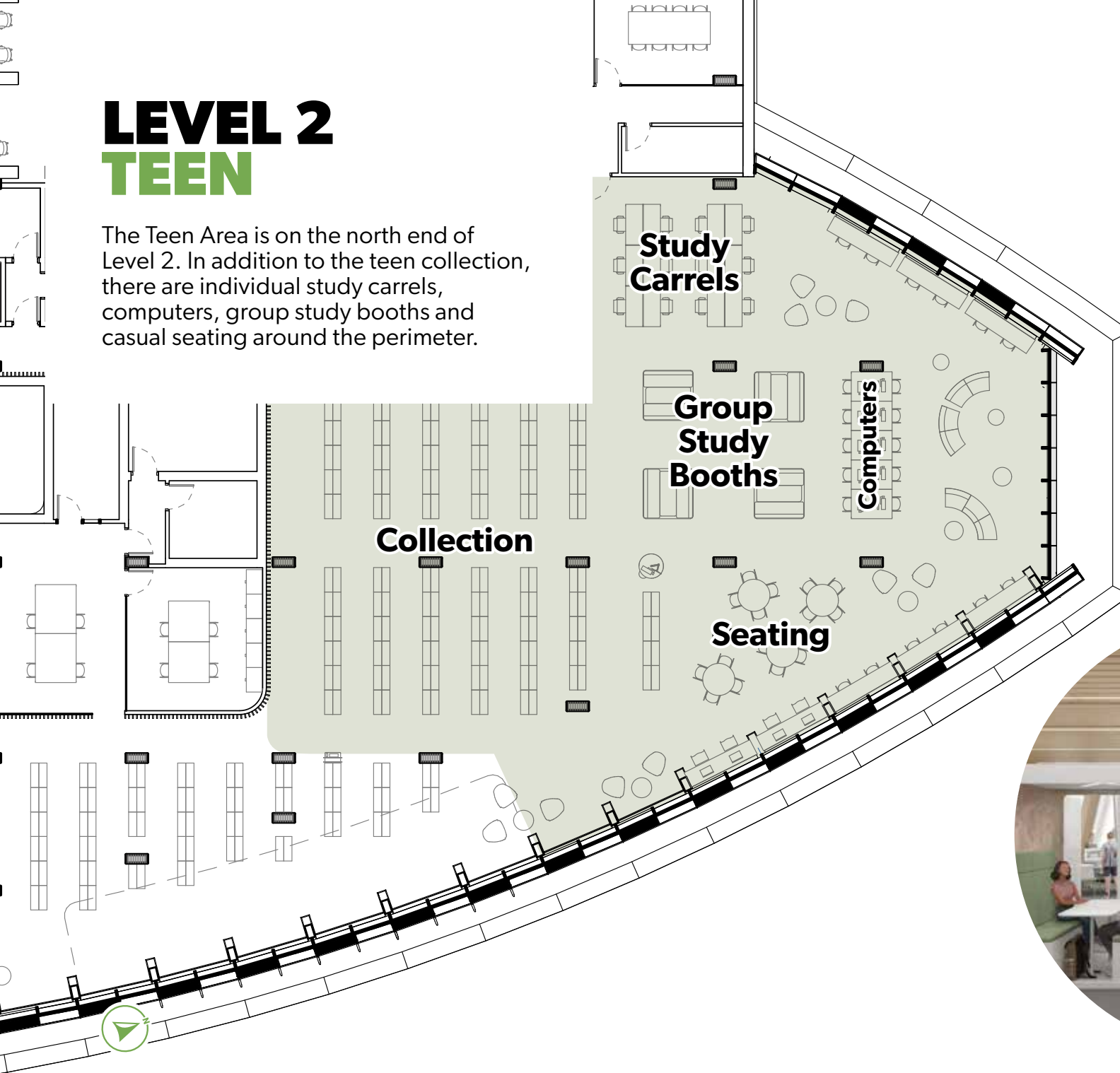
Computer Lab

The computer lab will provide a dedicated space for skills-based technology training.

LEVEL 2

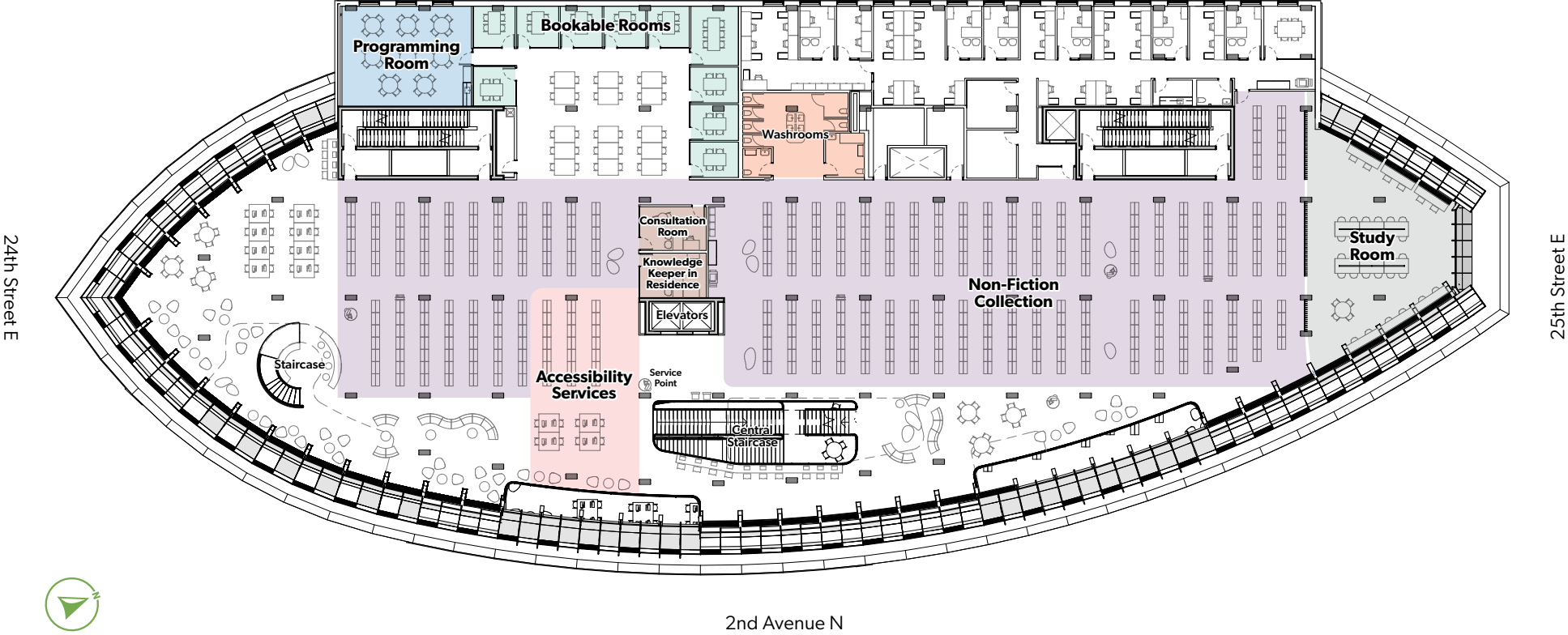
TEEN

The Teen Area is on the north end of Level 2. In addition to the teen collection, there are individual study carrels, computers, group study booths and casual seating around the perimeter.



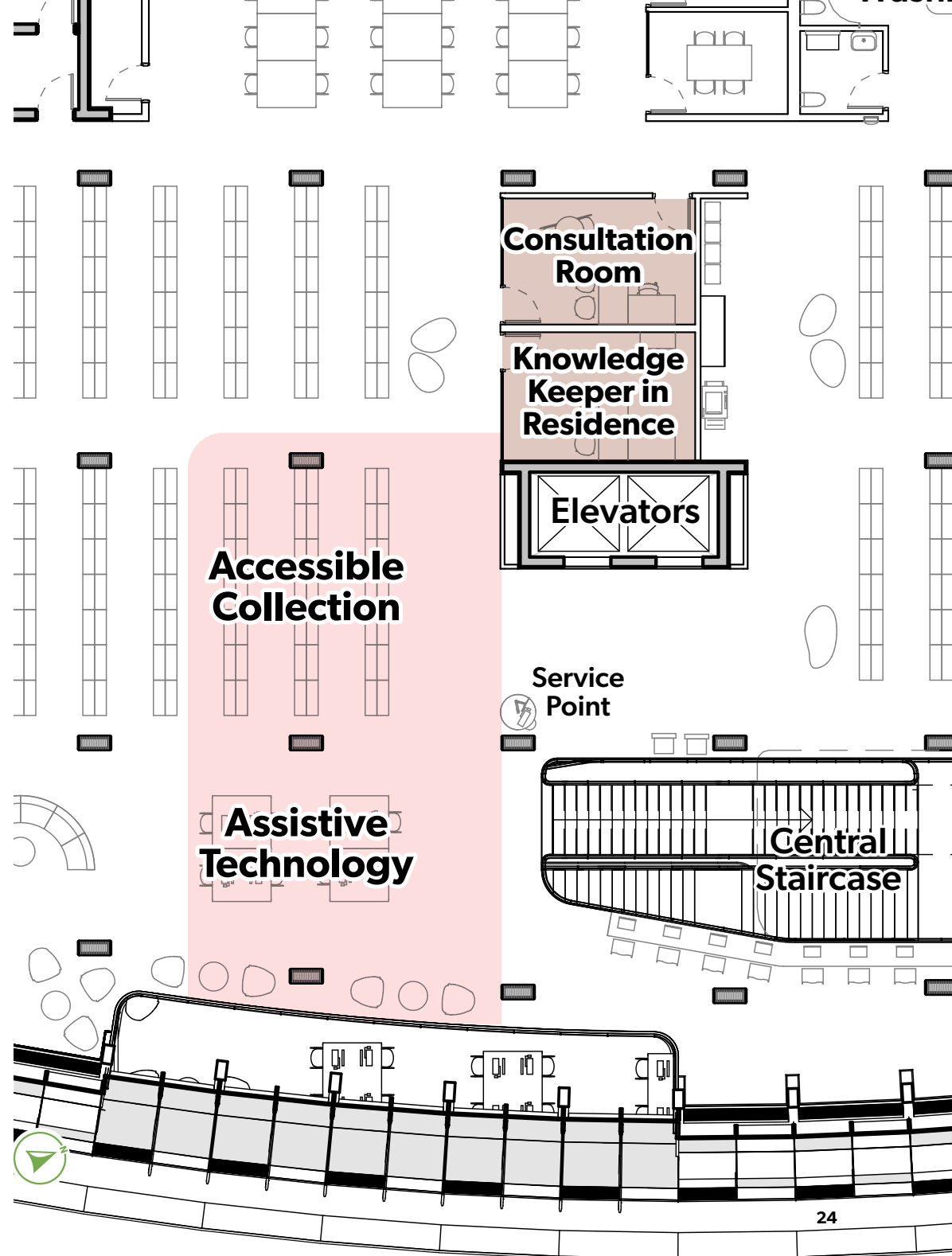
LEVEL 3

The components on Level 3 are the adult non-fiction collection and Accessibility Services. There is also a programming room, small bookable rooms and a quiet study room. In addition, there is a secondary staircase on Level 3 that opens to the reading room on Level 4, connecting the adult fiction and non-fiction collections.



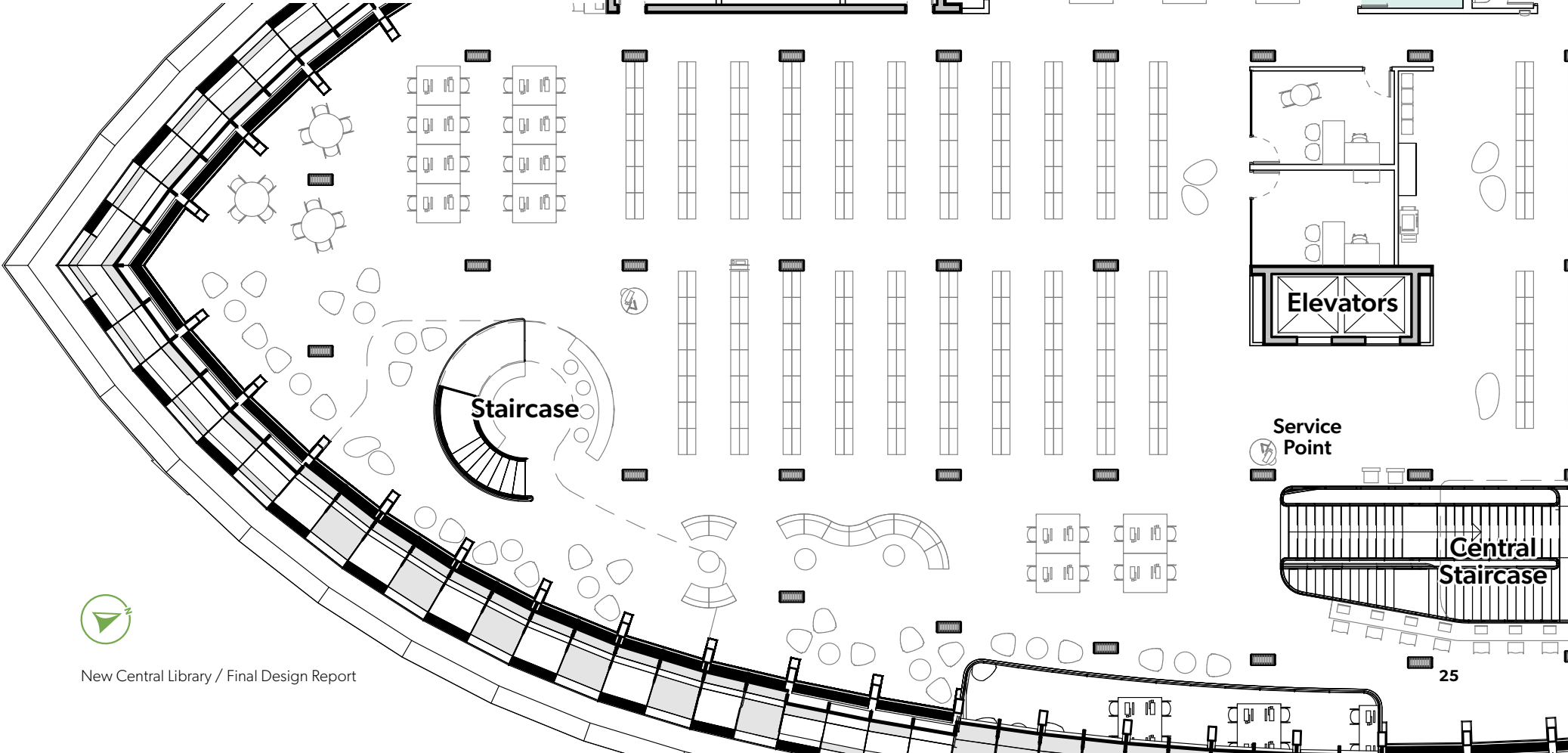
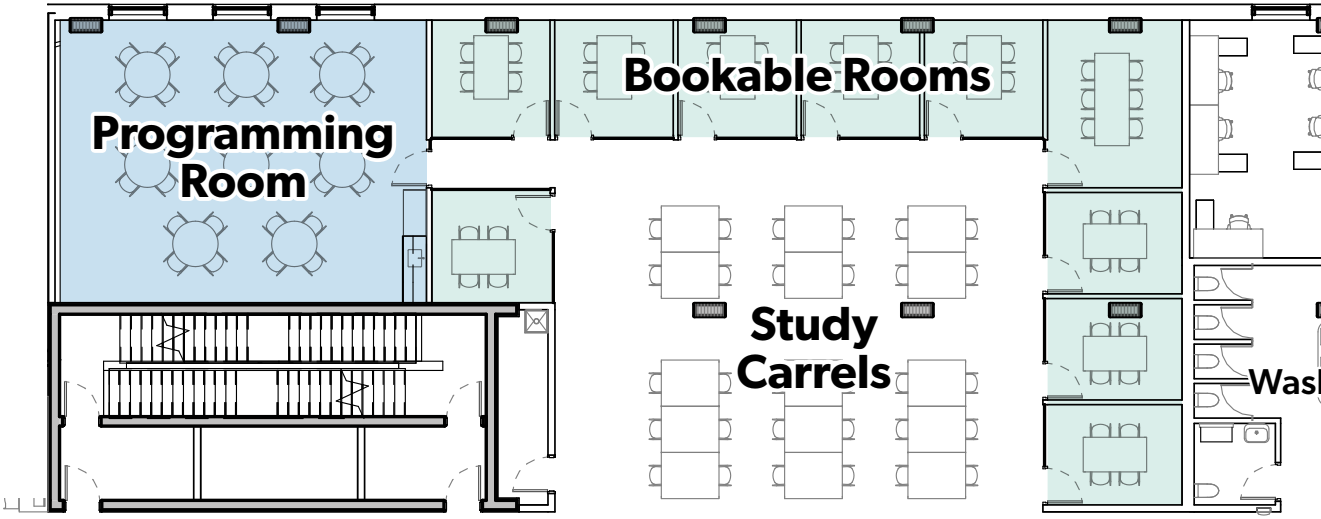
LEVEL 3 ACCESSIBILITY SERVICES

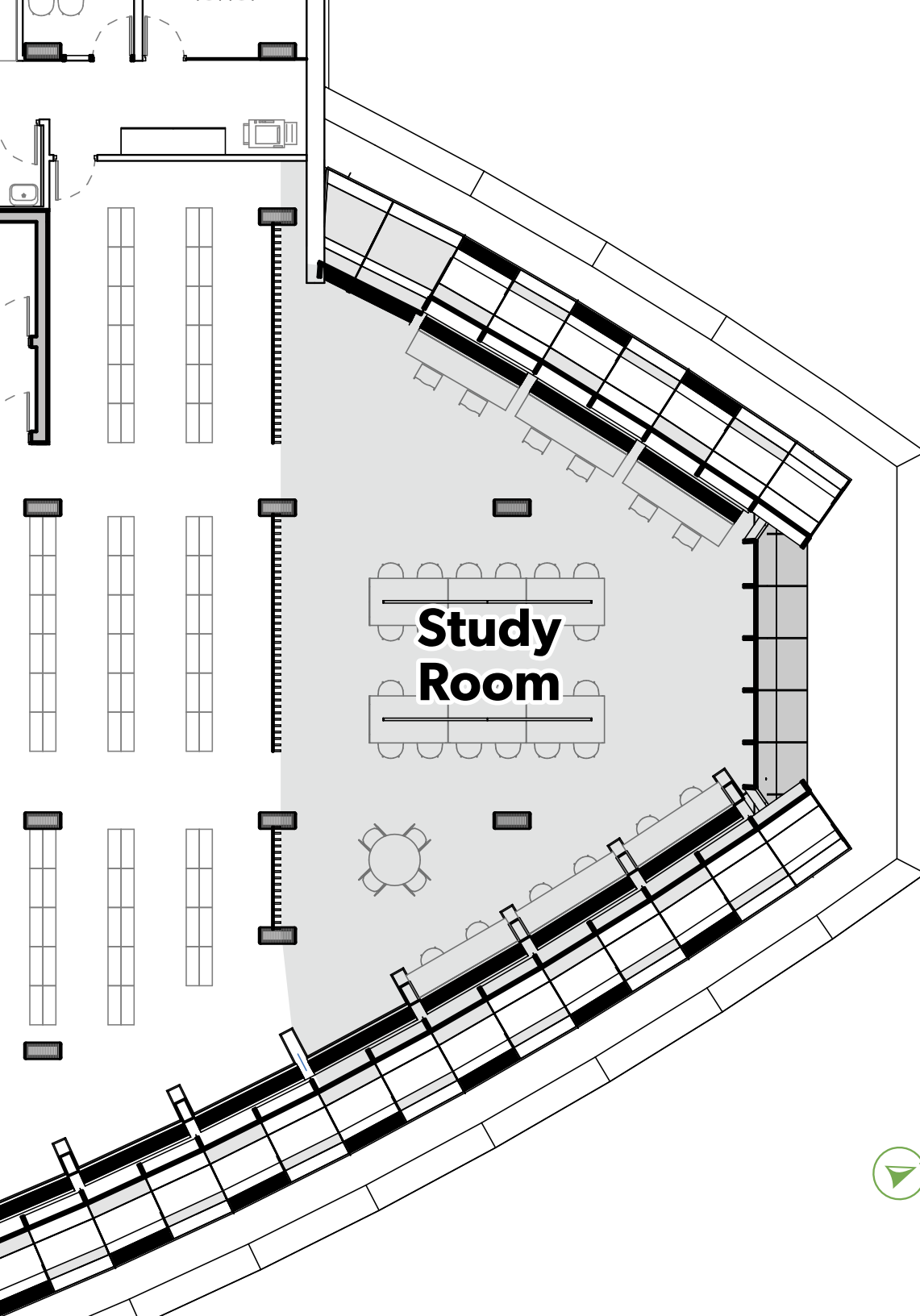
The assistive technology stations and the accessible collection for patrons with print disabilities are directly adjacent to the elevators. Also on this level is the Knowledge Keeper in Residence and a consultation room where patrons who require more in-depth assistance can meet with library employees.



LEVEL 3 BOOKABLE ROOMS

Along the west wall there is a small programming room and small bookable rooms for private meetings and group study. Individual study carrels are also included in this area.





LEVEL 3 STUDY ROOM

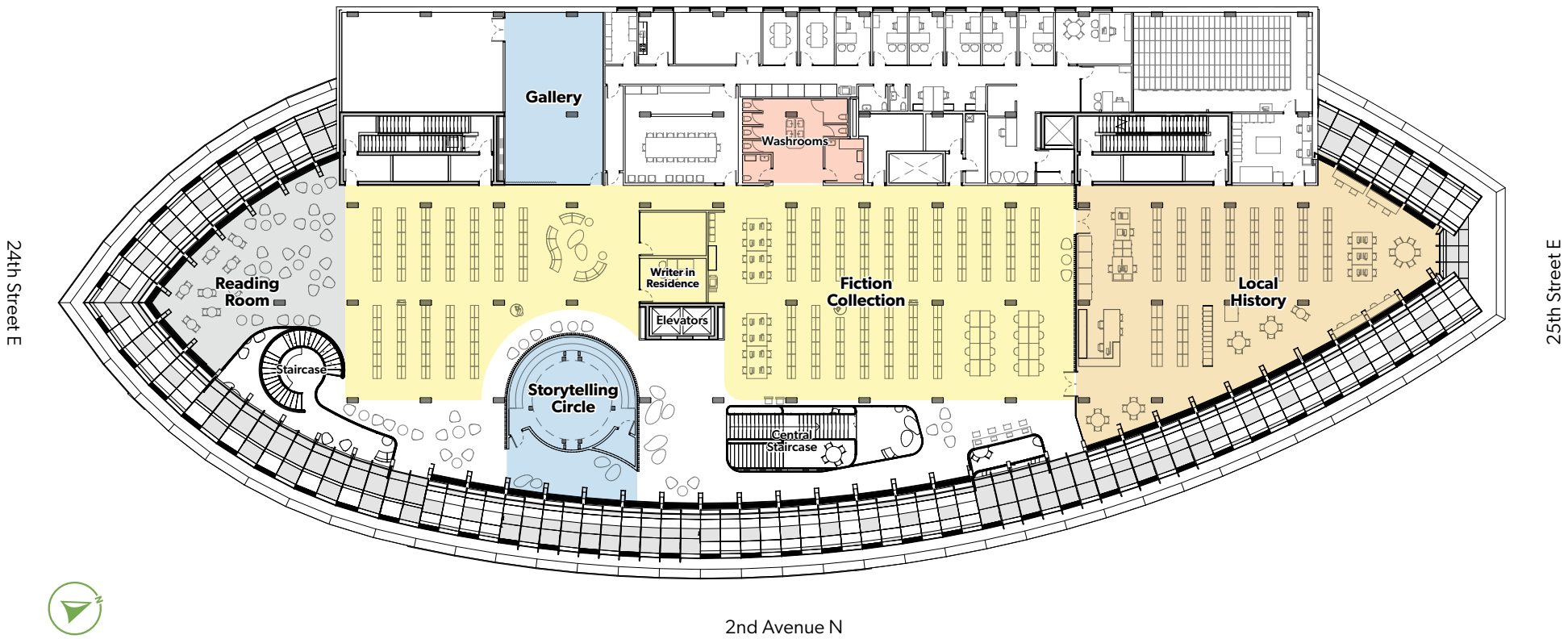
The Study Room will provide a relaxing oasis from the hustle and bustle of daily life. This space is designed to offer patrons dedicated silence and peaceful solitude for reading, work and study.

It features natural light and has a mix of table and laptop bar seating.



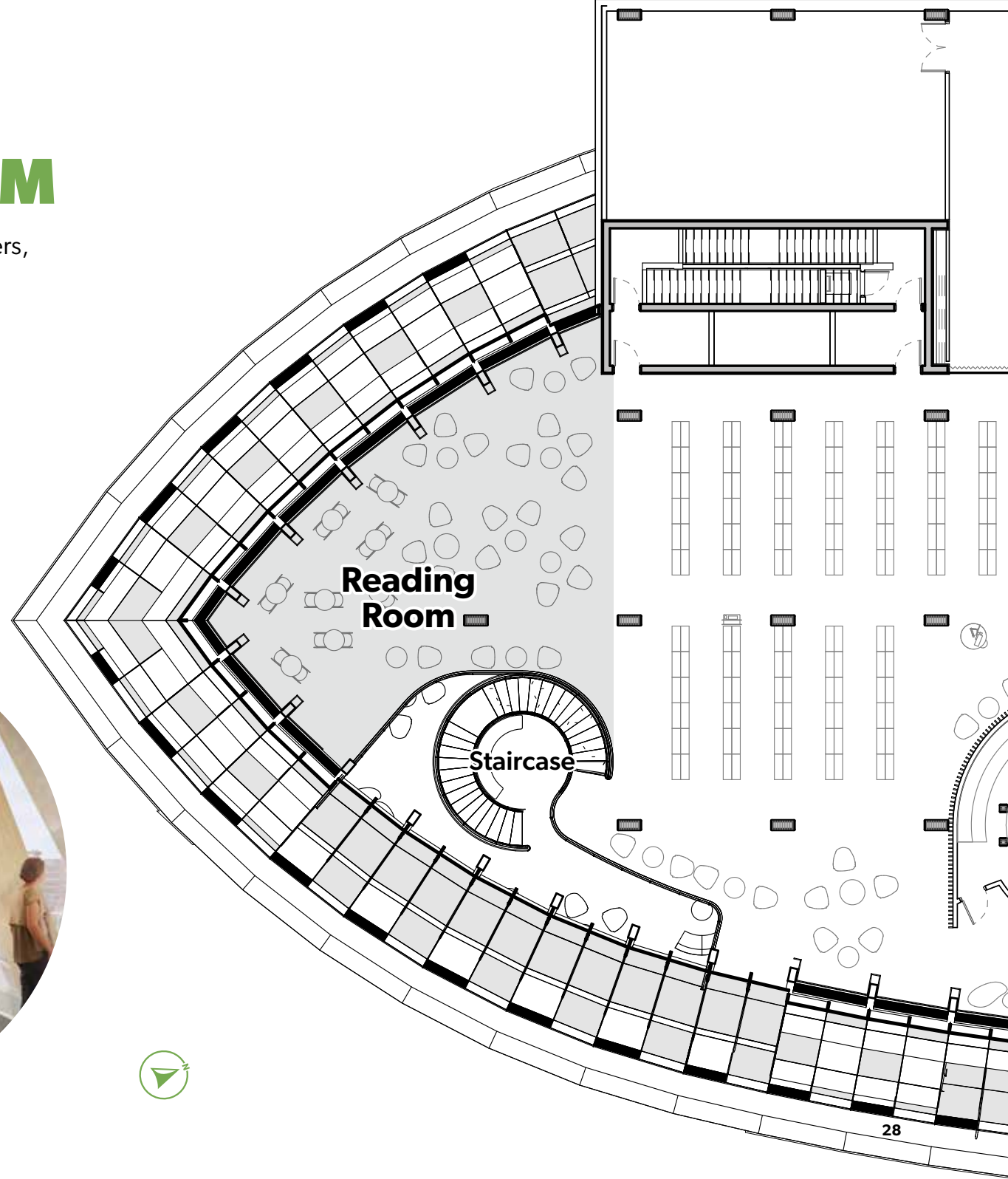
LEVEL 4

Level 4 is home to the adult fiction collection, the Reading Room, the Writer in Residence, the Gallery, the Storytelling Circle and Local History.



LEVEL 4 READING ROOM

Surrounded by magazines and newspapers, the Reading Room includes tables, casual soft seating and views overlooking the outdoor plaza.



LEVEL 4

SPECIALIZED SPACES



Storytelling Circle

The Storytelling Circle is a physical symbol of our community's commitment to reconciliation, promoting oral storytelling and Indigenous cultures. Designed in consultation with Knowledge Keepers, this circular space accommodates smudging and has overhead windows that draw in natural light.

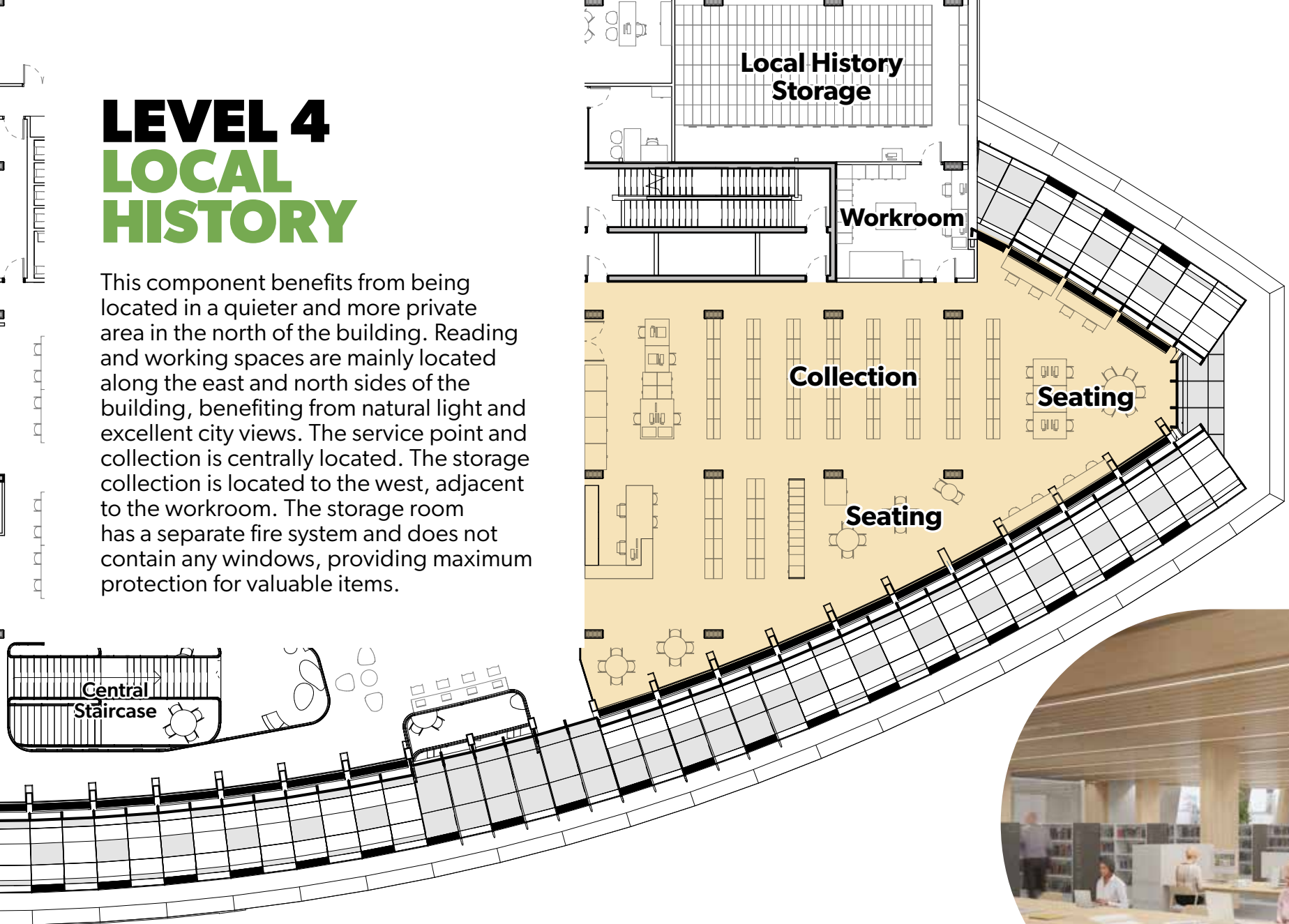


The Gallery

The Gallery will feature the work of new and emerging local artists. Designed to allow for flexibility in how exhibitions are displayed, it has a suspended ceiling grid and flexible lighting and sound options.

LEVEL 4 LOCAL HISTORY

This component benefits from being located in a quieter and more private area in the north of the building. Reading and working spaces are mainly located along the east and north sides of the building, benefiting from natural light and excellent city views. The service point and collection is centrally located. The storage collection is located to the west, adjacent to the workroom. The storage room has a separate fire system and does not contain any windows, providing maximum protection for valuable items.



EXTERIOR

25TH STREET EAST & 2ND AVENUE NORTH

